



OVER 60?

You could get up to
59% off the price!*

Price

£375,000

Freehold

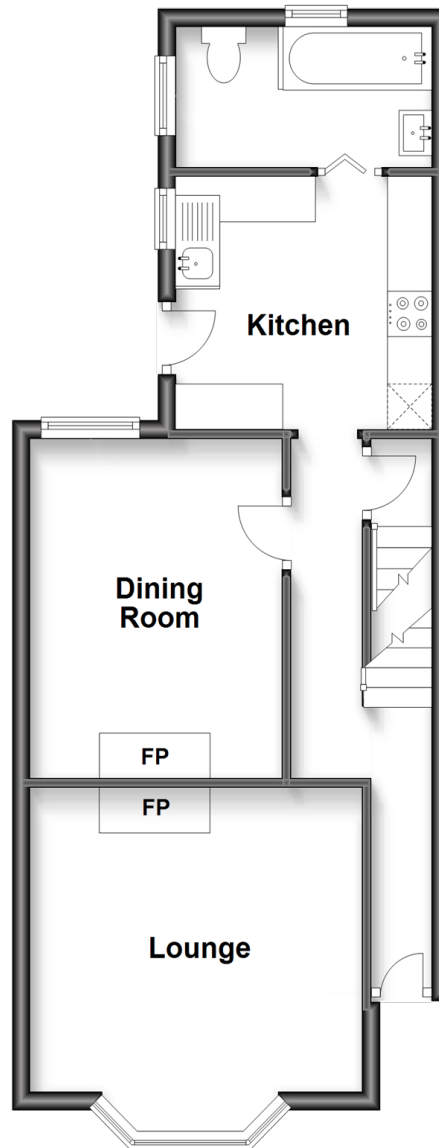
3x  1x  2x 

**Mount Pleasant Road,
Dartford, Kent, DA1**

Wards
Helping you move forwards

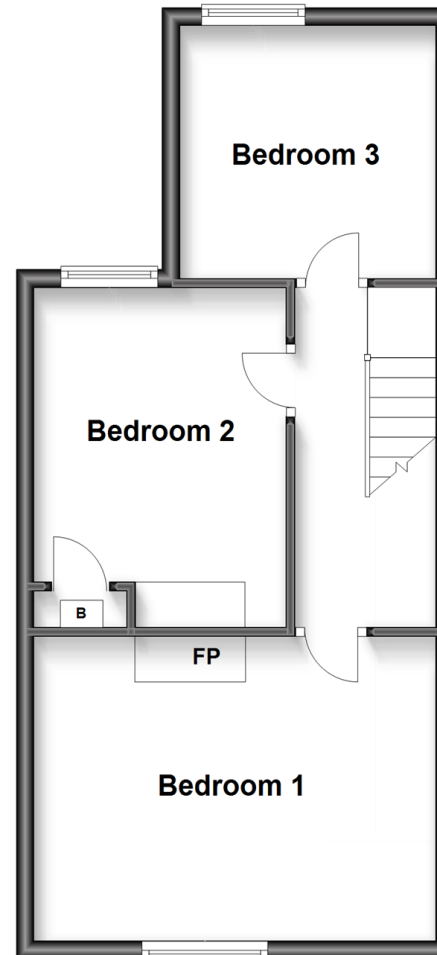
Split Level Ground Floor

Approx. 45.2 sq. metres (486.4 sq. feet)



Split Level First Floor

Approx. 41.1 sq. metres (442.3 sq. feet)



Accommodation

SPLIT LEVEL GROUND FLOOR

Entrance Hall

Lounge: 11'4 x 10'11 (3.46m x 3.33m)

Dining Room: 12'0 x 9'9 (3.66m x 2.97m)

Kitchen: 9'7 x 8'10 (2.92m x 2.69m)

Bathroom: 9'6 x 4'11 (2.90m x 1.50m)

BASEMENT

Basement Room : 14'11 x 10'8 (4.55m x 3.25m)

SPLIT LEVEL FIRST FLOOR

Landing

Bedroom 1: 15'3 x 10'11 (4.65m x 3.33m)

Bedroom 2: 10'8 x 9'6 (3.25m x 2.90m)

Bedroom 3: 9'7 x 8'11 (2.92m x 2.72m)

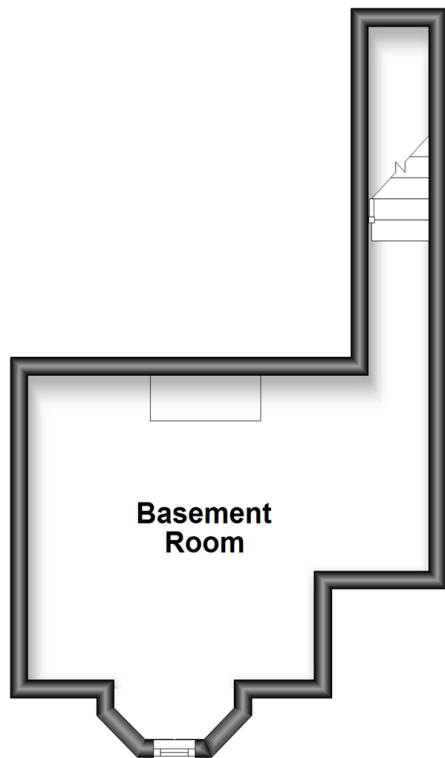
OUTSIDE

Front Garden

Rear Garden

Basement

Approx. 17.1 sq. metres (184.0 sq. feet)





Main features

- Delightful semi-detached house with period features
- Handy converted large cellar
- All bedrooms are great sizes
- Three tiered garden with side access
- Fantastic location for Dartford Rail Station and town centre



Nearest Schools

Primary Schools: York Road Junior School and Language Unit 0.3 miles, Westgate Primary 0.5 miles, St Anselm's Catholic Primary 0.5 miles

Secondary Schools: Dartford Grammar School 0.7 miles,



Transport Information

Train Stations: Dartford 0.8 miles, Stone Crossing 2.4 miles, Crayford 2.5 miles



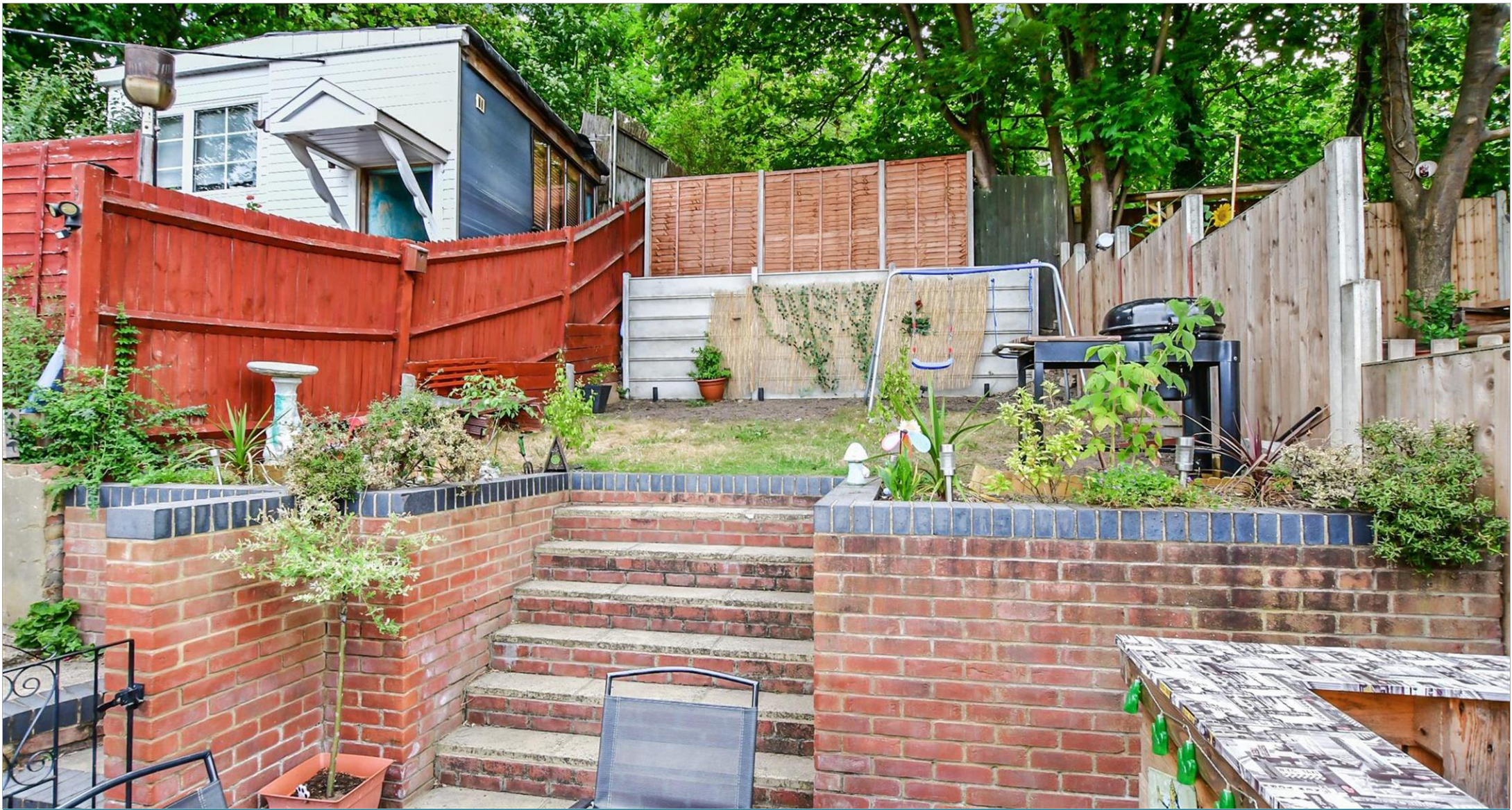
Address

Mount Pleasant Road, Dartford, Kent, DA1



Directions

For directions to this property please contact us.



Wards
Helping you move forwards

Call Dartford Branch 01322 288211 ■ wardsofkent.co.uk



- If buying to let, the energy rating will need to be improved to at least 'E' rating before you can let the property
- Appliances & services are untested, dimensions are approximate and floor plans are not to scale

- Legal advice should be taken to verify fixtures/fittings, planning, alterations and/or lease details
- Our Homewise partnership offer a 'Home for Life' plan to buyers over 60, granting a lifetime lease for your protection and reducing the purchase price by up to 59%



10529402/20220910/MM/LH