



**OVER 60?**

Secure this property  
for up to **59% less!**

**Price**

**£550,000**

**Freehold**

3x  1x  1x 

**Warren Road, Dartford,  
Kent, DA1**

**Wards**  
Helping you move forwards





## Main features

- **Exceptional semi-detached bungalow**
- **Corner plot with detached double garage**
- **Recently upgraded throughout**
- **Popular residential area with a good mix of property types**
- **Great school catchment area with easy access to Dartford town centre**

## Accommodation

### GROUND FLOOR

#### Entrance Hallway

Dining Area: 13'0 x 11'9 (3.97m x 3.58m)

Lounge: 13'0 x 10'10 (3.97m x 3.30m)

Kitchen: 13'4 x 8'9 (4.07m x 2.67m)

Utility Room: 9'1 x 7'7 (2.77m x 2.31m)

Bedroom 1: 12'5 x 7'8 (3.79m x 2.34m)

Bedroom 2: 11'5 x 11'5 (3.48m x 3.48m)

Bedroom 3: 9'5 x 7'9 (2.87m x 2.36m)

Bathroom: 11'7 x 5'5 (3.53m x 1.65m)

### OUTSIDE

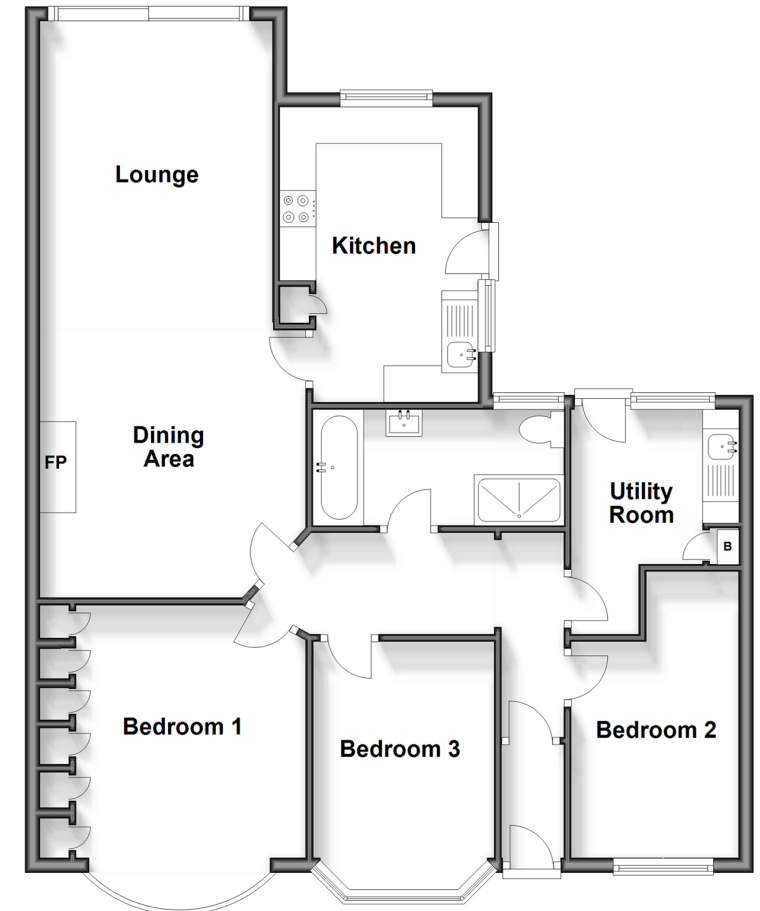
Front Garden

Rear Garden

Detached Double Garage

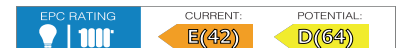
### Ground Floor

Approx. 88.9 sq. metres (956.7 sq. feet)



**Call Dartford - 01322 288211 ■ [wardsofkent.co.uk](http://wardsofkent.co.uk)**

- Legal advice should be taken to verify fixtures/fittings, planning, alterations and/or lease details
- Appliances & services are untested, dimensions are approximate and floor plans are not to scale
- Through a Homewise Home For Life Plan people aged 60+ can secure this property for up to 59% less, by purchasing a Lifetime Lease.



10536791/20240410/RM/PP