



**Offers In  
Excess Of  
£550,000  
Freehold**

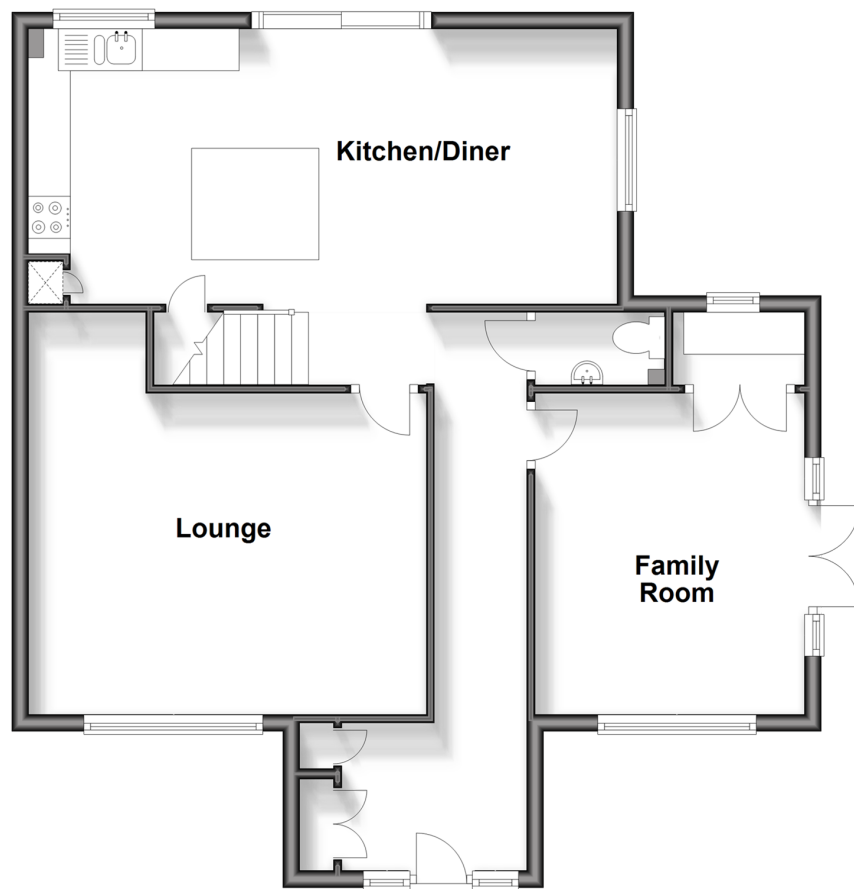
4x  2x  2x 

**Wallis Close, Dartford,  
Kent, DA2**

*Wards*  
Helping you move forwards

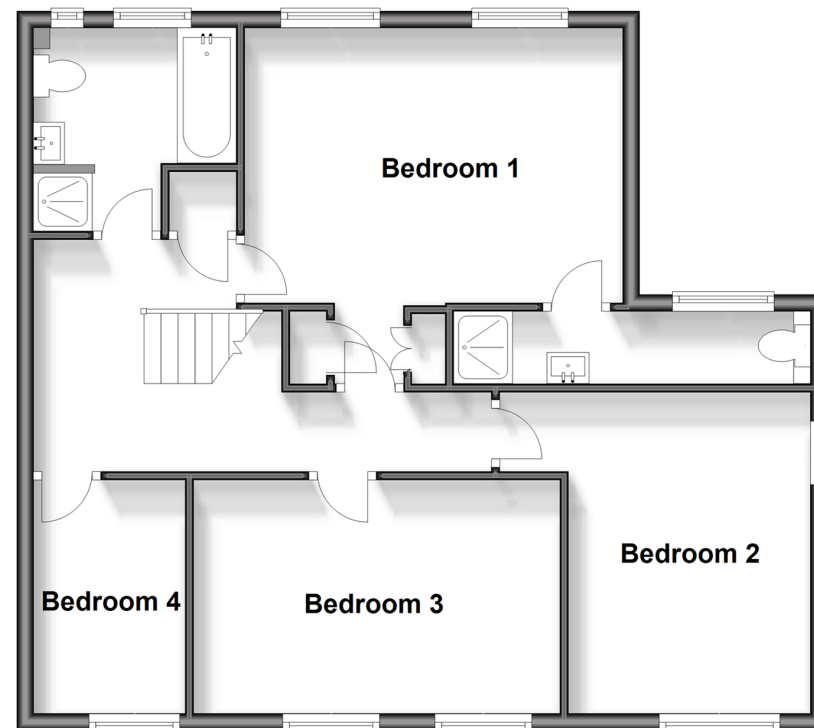
## Ground Floor

Approx. 72.8 sq. metres (783.9 sq. feet)



## First Floor

Approx. 67.8 sq. metres (729.9 sq. feet)



## Accommodation

### GROUND FLOOR

Hallway  
Family Room: 12'4 x 10'3 (3.76m x 3.13m)  
Utility Room  
Cloakroom  
Kitchen/Diner: 23'5 x 10'3 (7.14m x 3.13m)  
Lounge: 15'9 (4.80m) x 15'6 (4.73m)  
narrowing to 12'3 (3.74m)

### FIRST FLOOR

Landing  
Bedroom 1: 15'3 x 13'6 (4.65m x 4.12m)  
En-suite Shower Room  
Bathroom: 7'8 x 7'6 (2.34m x 2.29m)  
Bedroom 4: 9'7 x 5'5 (2.92m x 1.65m)  
Bedroom 3: 12'6 x 11'8 (3.81m x 3.56m)  
Bedroom 2: 15'0 x 9'5 (4.58m x 2.87m)

### OUTSIDE

Driveway  
Side Garden  
Rear Garden





## Main features

- Extended semi-detached house nestled in a quiet cul-de-sac
- Handy en-suite to main bedroom and downstairs cloakroom
- Ample off road parking
- Catchment for Wilmington Grammar Schools and Academy
- Ideal for A2/M25 motorways



### Nearest Schools

Primary Schools: Maypole Primary 0.4 miles, Wilmington Primary 0.5 miles  
Secondary Schools: Wilmington Enterprise College 0.3 miles, The Grammar School for Girls Wilmington 0.3 miles, Wilmington Grammar School for Boys 0.4 miles



### Transport Information

Train Stations: Crayford 2.2 miles, Bexley 2.5 miles, Dartford 2.5 miles



### Address

Wallis Close, Dartford, Kent, DA2



### Directions

For directions to this property please contact us.





Call Dartford Branch 01322 288211 ■ [wardsofkent.co.uk](http://wardsofkent.co.uk)



■ Legal advice should be taken to verify fixtures/fittings, planning, alterations and/or lease details ■ Appliances & services are untested, dimensions are approximate and floor plans are not to scale



10538180/20240219/SM/LH