



**Price**

**£540,000**

**Freehold**

5x  2x  2x 

**Havelock Road,  
Dartford, Kent, DA1**

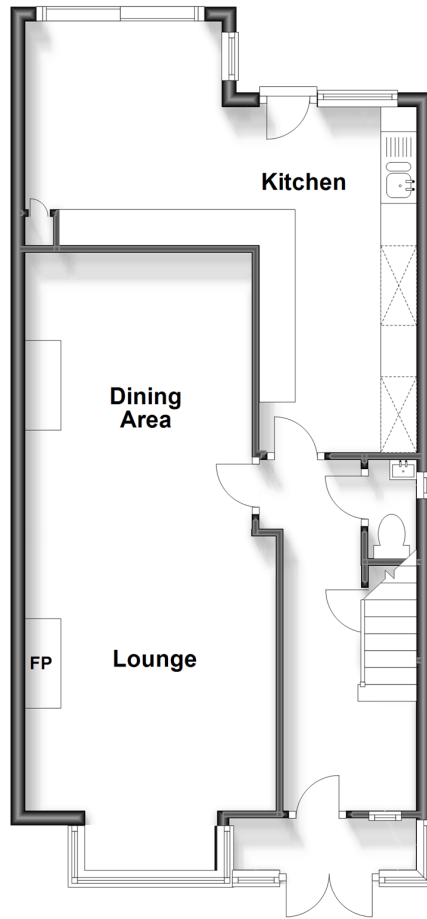
**OVER 60?**

Secure this property  
for up to **59% less!**

**Wards**  
Helping you move forwards

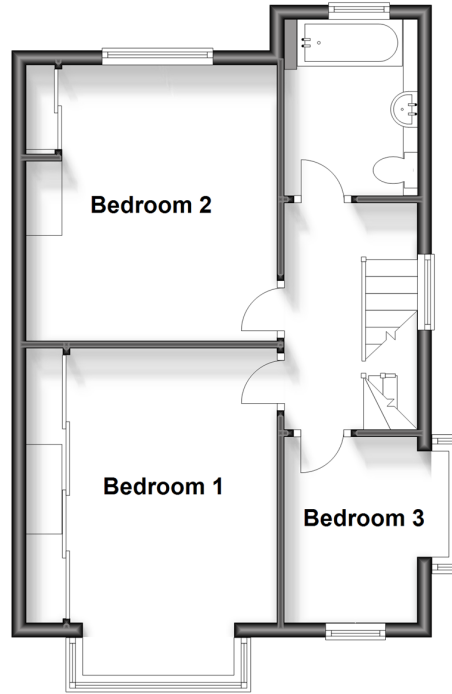
## Ground Floor

Approx. 59.8 sq. metres (644.1 sq. feet)



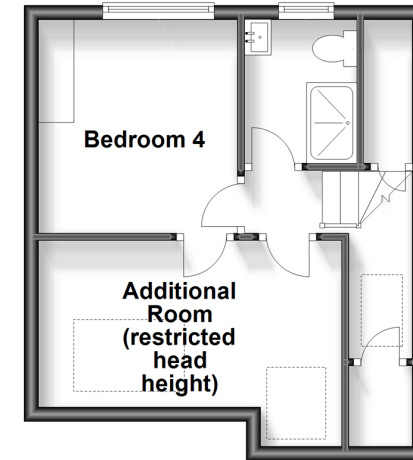
## First Floor

Approx. 44.8 sq. metres (482.1 sq. feet)



## Second Floor

Approx. 29.4 sq. metres (316.7 sq. feet)



## Accommodation

### GROUND FLOOR

Entrance Porch  
Entrance Hallway  
Cloakroom  
Lounge Area: 12'6 x 11'6 (3.81m x 3.51m)  
Dining Area: 13'4 x 11'2 (4.07m x 3.41m)  
Kitchen : (L-shaped) 9'9 x 6'6 (2.97m x 1.98m) plus  
17'6 x 10'2 (5.34m x 3.10m)

### FIRST FLOOR

Landing  
Bedroom 1: 13'5 x 11'4 (4.09m x 3.46m)  
Bedroom 2: 12'7 x 11'4 (3.84m x 3.46m)  
Bedroom 3: 8'5 x 8'0 (2.57m x 2.44m)  
Bathroom: 7'6 x 6'5 (2.29m x 1.96m)

### SECOND FLOOR

Landing  
Bedroom 4: 13'9 x 7'3 (4.19m x 2.21m)  
Bedroom 5: 9'7 x 8'9 (2.92m x 2.67m)  
Shower Room: 6'9 x 4'9 (2.06m x 1.45m)

### OUTSIDE

Front Garden  
Driveway  
Detached Garage  
Rear Garden





## Main features

- Substantial semi-detached house on one of Dartford's premier roads
- Detached garage and driveway
- Accommodation over three floors
- Choice of Dartford and 'Zone 6' Crayford Stations
- Catchment for some of the best primary and secondary in the country



### Nearest Schools

Primary Schools: West Hill Primary 0.5 miles, Our Lady's Catholic Primary, Dartford 0.9 miles, Westgate Primary 0.9 miles

Secondary Schools: Dartford Grammar School for Girls 0.6



### Transport Information

Train Stations: Crayford 1.3 miles, Dartford 1.6 miles, Erith 2.7 miles



### Address

Havelock Road, Dartford, Kent, DA1



### Directions

For directions to this property please contact us.





Call Dartford Branch 01322 288211 ■ [wardsofkent.co.uk](https://wardsofkent.co.uk)



- Legal advice should be taken to verify fixtures/fittings, planning, alterations and/or lease details
- Appliances & services are untested, dimensions are approximate and floor plans are not to scale
- Through a Homewise Home For Life Plan people aged 60+ can secure this property for up to 59% less, by purchasing a Lifetime Lease.



10539542/20240113/MP/PP