



Price

£950,000

Freehold

4x  3x  4x 

**Birchwood Road,
Dartford, Kent, DA2**

OVER 60?

Secure this property
for up to **59% less!**

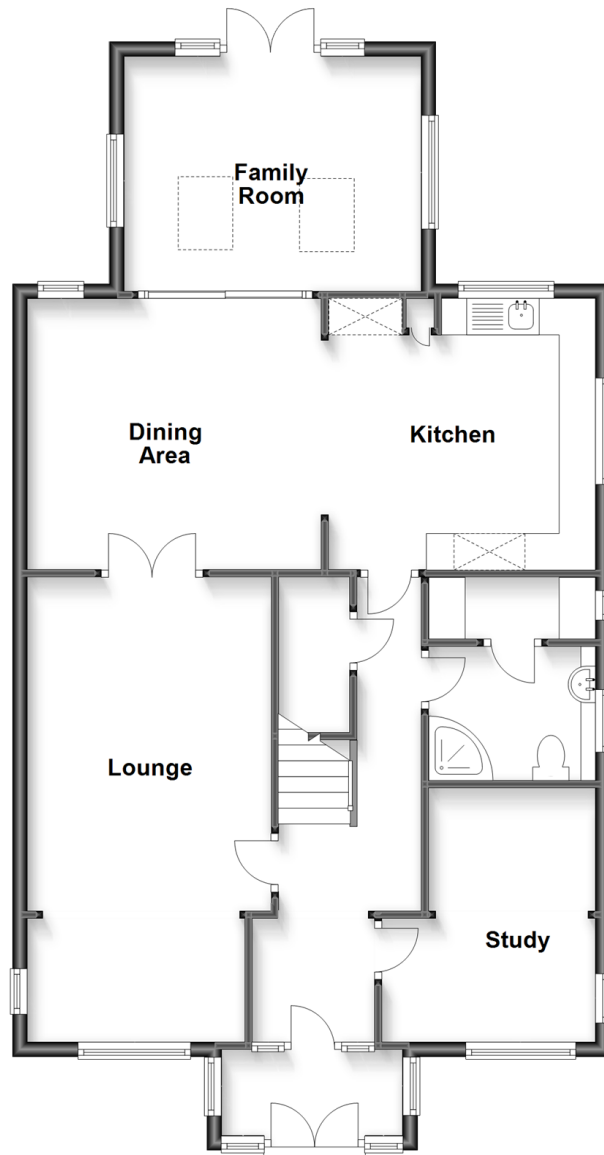


Video Tour available

Wards
Helping you move forwards

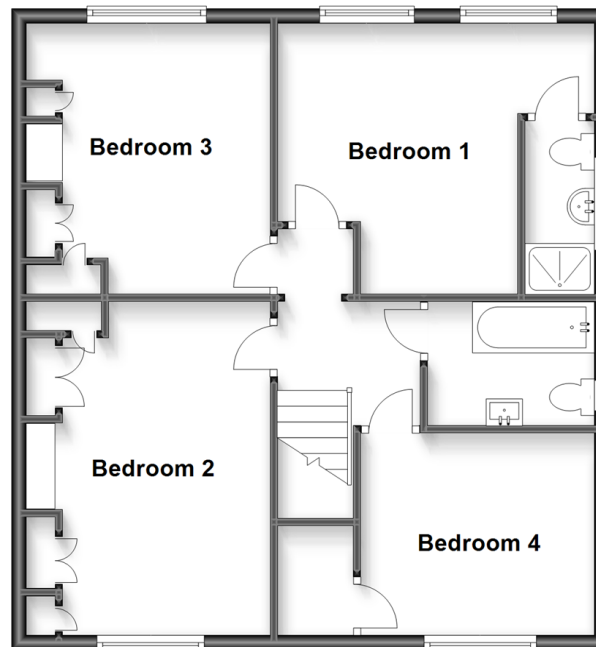
Split Level Ground Floor

Approx. 96.5 sq. metres (1038.4 sq. feet)



First Floor

Approx. 65.6 sq. metres (706.4 sq. feet)



Accommodation

GROUND FLOOR

Entrance Porch

Entrance Hall

Study: 12'5 (3.79m) x 9'6 (2.90m) narrowing to 7'4 (2.24m)

Lounge: 21'3 (6.48m) x 10'9 (3.28m) narrowing to 8'9 (2.67m)

Dining Area: 13'2 x 12'0 (4.02m x 3.66m)

Kitchen Area: 12'0 x 11'6 (3.66m x 3.51m)

Utility

FIRST FLOOR

Bedroom 1: 12'3 x 11'7 (3.74m x 3.53m)

En-suite

Bedroom 2: 14'9 x 10'8 (4.50m x 3.25m)

Bedroom 3: 12'0 x 9'6 (3.66m x 2.90m)

Bedroom 4: 10'9 x 8'9 (3.28m x 2.67m)

OUTSIDE

Garage (now used as an office): 18'0 x 9'6 (5.49m x 2.90m)

Rear Garden



Main features

- A substantial detached family home
- Detached garage currently used as an office
- Forecourt parking for several vehicles
- Set on arguably the areas 'premier' road with views to the front over fields
- Within walking distance of the golf club and good access to the A2 & M20 motorways



Nearest Schools

Primary Schools: Joydens Wood Junior School 0.2 miles, Maypole Primary 0.6 miles, Hextable Primary 0.7 miles

Secondary Schools: Furness School 0.6 miles, Wilmington Enterprise College 0.8 miles, Wilmington Grammar School



Transport Information

Train Stations: Bexley 1.6 miles, Crayford 1.7 miles, Swanley 2.0 miles



Address

Birchwood Road, Dartford, Kent, DA2



Directions

For directions to this property please contact us.



Call Dartford Branch 01322 288211 ■ wardsofkent.co.uk



- Legal advice should be taken to verify fixtures/fittings, planning, alterations and/or lease details
- Appliances & services are untested, dimensions are approximate and floor plans are not to scale
- Through a Homewise Home For Life Plan people aged 60+ can secure this property for up to 59% less, by purchasing a Lifetime Lease.



10539986/20230603/MP/GL