



OVER 60?

Secure this property
for up to **59% less!**

Price

£220,000

Leasehold

2x  1x  1x 

**Orford Court, Osbourne
Road, Dartford, Kent,
DA2**

Wards
Helping you move forwards



Main features

- Top floor flat
- Allocated parking
- Communal gardens
- Situated on the outskirts of town yet within walking distance of the rail station
- A home with great potential and offered for sale with no chain

Accommodation

TOP FLOOR

Entrance Hall

Bedroom 1: 15'4 (4.68m) x 11'0 (3.36m) narrowing to 9'0 (2.75m)

Bedroom 2: 9'0 x 8'5 (2.75m x 2.57m)

Lounge/Diner: 17'7 x 11'8 (5.36m x 3.56m)

Kitchen: 10'3 x 6'0 (3.13m x 1.83m)

Bathroom

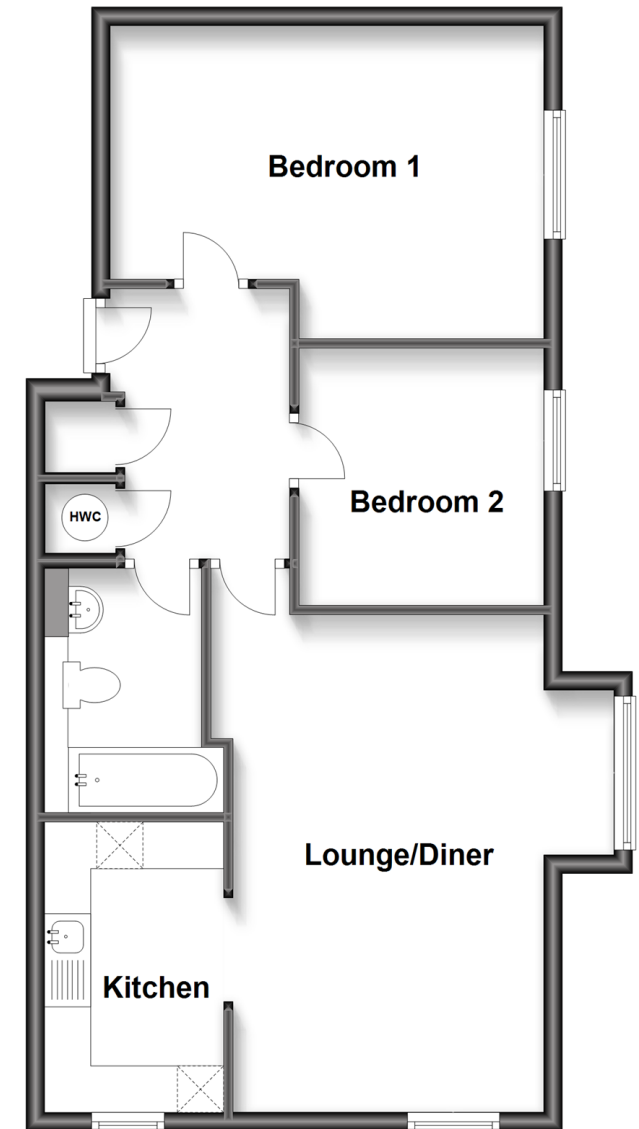
OUTSIDE

Allocated Parking Space

Communal Garden

Top Floor

Approx. 61.6 sq. metres (663.6 sq. feet)



Call Dartford - 01322 288211 ■ wardsofkent.co.uk

- Legal advice should be taken to verify fixtures/fittings, planning, alterations and/or lease details
- Appliances & services are untested, dimensions are approximate and floor plans are not to scale
- Through a Homewise Home For Life Plan people aged 60+ can secure this property for up to 59% less, by purchasing a Lifetime Lease.



10544636/20221116/LH/GL