



OVER 60?

Secure this property
for up to **59% less!**

Price

£160,000

Leasehold

1x  1x  1x 

**Dunlop Close, Dartford,
Kent, DA1**

Wards
Helping you move forwards



Main features

- Delightful ground floor flat
- Handy lease upon completion
- Modern decor throughout
- Offered for sale with no forward chain
- Ideal location for Dartford town centre and train station

Accommodation

GROUND FLOOR

Living Room: 16'5 x 9'9 (5.01m x 2.97m)

Bedroom: 10'9 x 7'0 (3.28m x 2.14m)

Kitchen : 7'11 x 6'10 (2.41m x 2.08m)

Bathroom: 9'4 x 7'1 (2.85m x 2.16m)

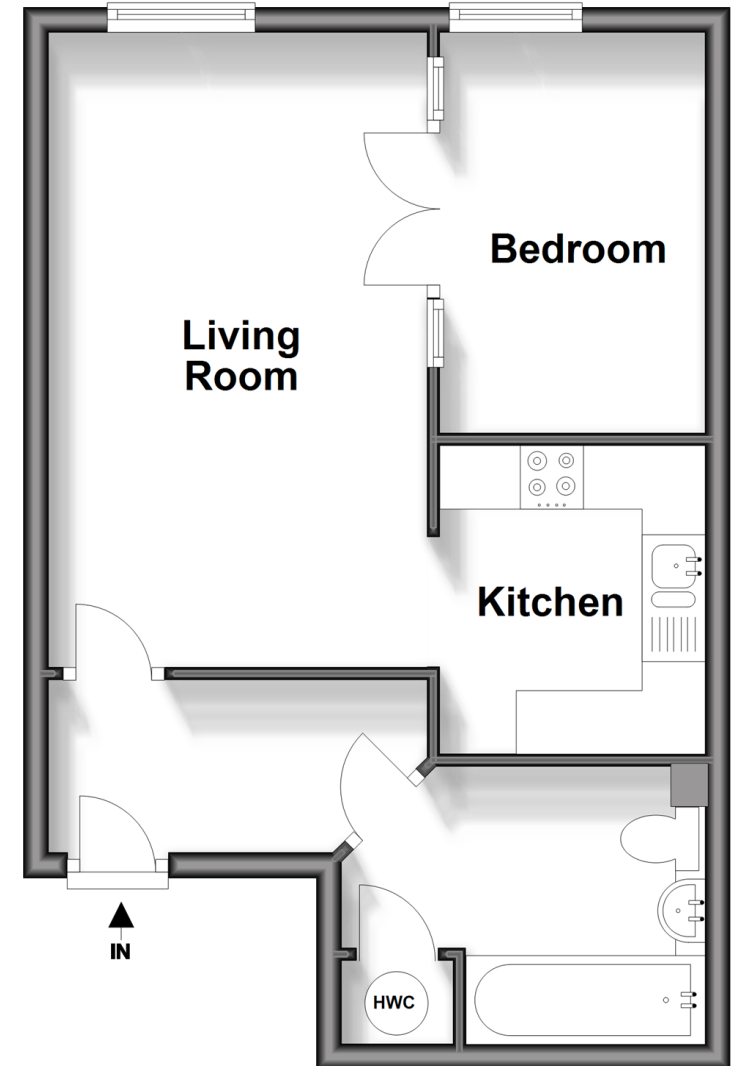
OUTSIDE

Communal Garden

Allocated Parking Space

Ground Floor

Approx. 38.0 sq. metres (408.9 sq. feet)



Call Dartford - 01322 288211 ■ wardsofkent.co.uk

- Legal advice should be taken to verify fixtures/fittings, planning, alterations and/or lease details
- Appliances & services are untested, dimensions are approximate and floor plans are not to scale
- Through a Homewise Home For Life Plan people aged 60+ can secure this property for up to 59% less, by purchasing a Lifetime Lease.



10544830/20240429/RM/LH