



Guide Price
£425,000

Freehold

2x  2x  1x 

**Fulwich Road, Dartford,
Kent, DA1**

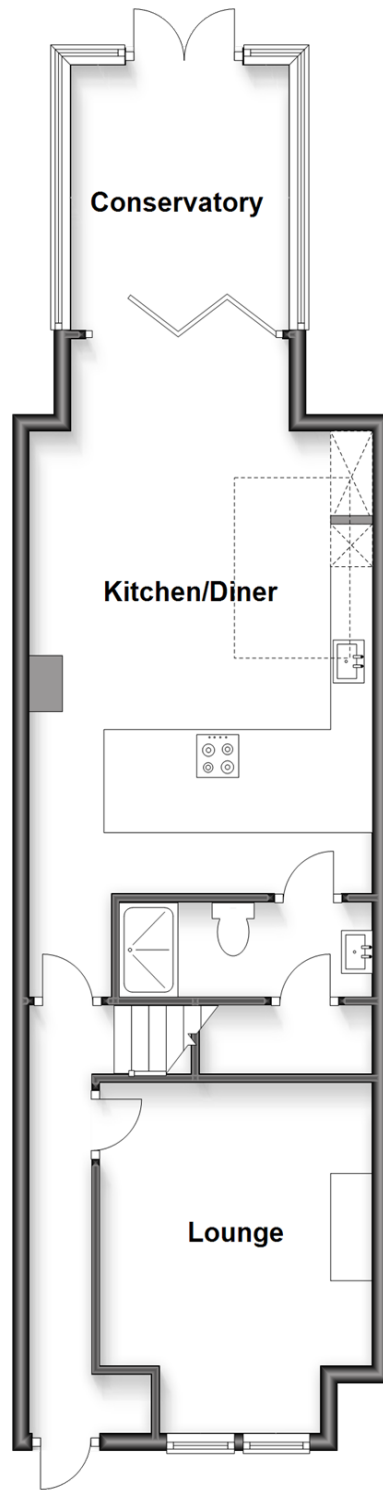
OVER 60?

Secure this property
for up to **59% less!**

Wards
Helping you move forwards

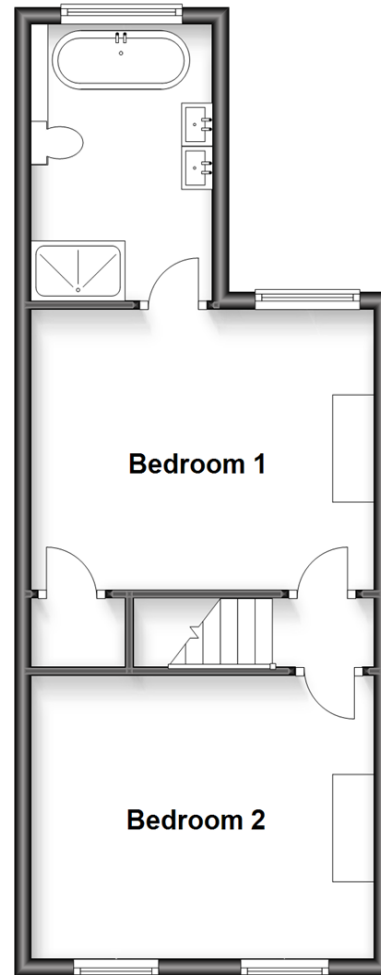
Ground Floor

Approx. 58.5 sq. metres (629.9 sq. feet)



Split Level First Floor

Approx. 38.2 sq. metres (411.3 sq. feet)



Accommodation

GROUND FLOOR

Hall

Lounge: 13'5 x 9'8 (4.09m x 2.95m)

Kitchen/Diner: 24'6 x 12'10 (7.47m x 3.91m)

Downstairs Shower Room: 9'11 x 3'3 (3.02m x 0.99m)

Utility Room

Conservatory: 10'5 x 10'4 (3.18m x 3.15m)

SPLIT LEVEL FIRST FLOOR

Bedroom 1: 14'2 x 10'8 (4.32m x 3.25m)

En-Suite Bathroom: 9'10 x 6'9 (3.00m x 2.06m)

Bedroom 2: 14'2 x 10'8 (4.32m x 3.25m)

OUTSIDE

Front Garden

Rear Garden

Summer House

Outbuilding with Cloakroom

Hot tub



Main features

- Executive extended family house with oak wood floors
- No expense spared throughout
- Beautiful landscaped garden with outbuilding and hot tub
- En-suite to main bedroom and downstairs shower room and utility
- Ideal for train station, bus routes, town centre and local amenities



Nearest Schools

Primary Schools: St Anselm's Catholic Primary 0.5 miles, The Gateway Primary 0.9 miles, Temple Hill Community Primary and Nursery School 0.9 miles

Secondary Schools: The Leigh Technology Academy 0.9



Transport Information

Train Stations: Dartford 0.8 miles, Stone Crossing 2.0 miles, Greenhithe 2.8 miles



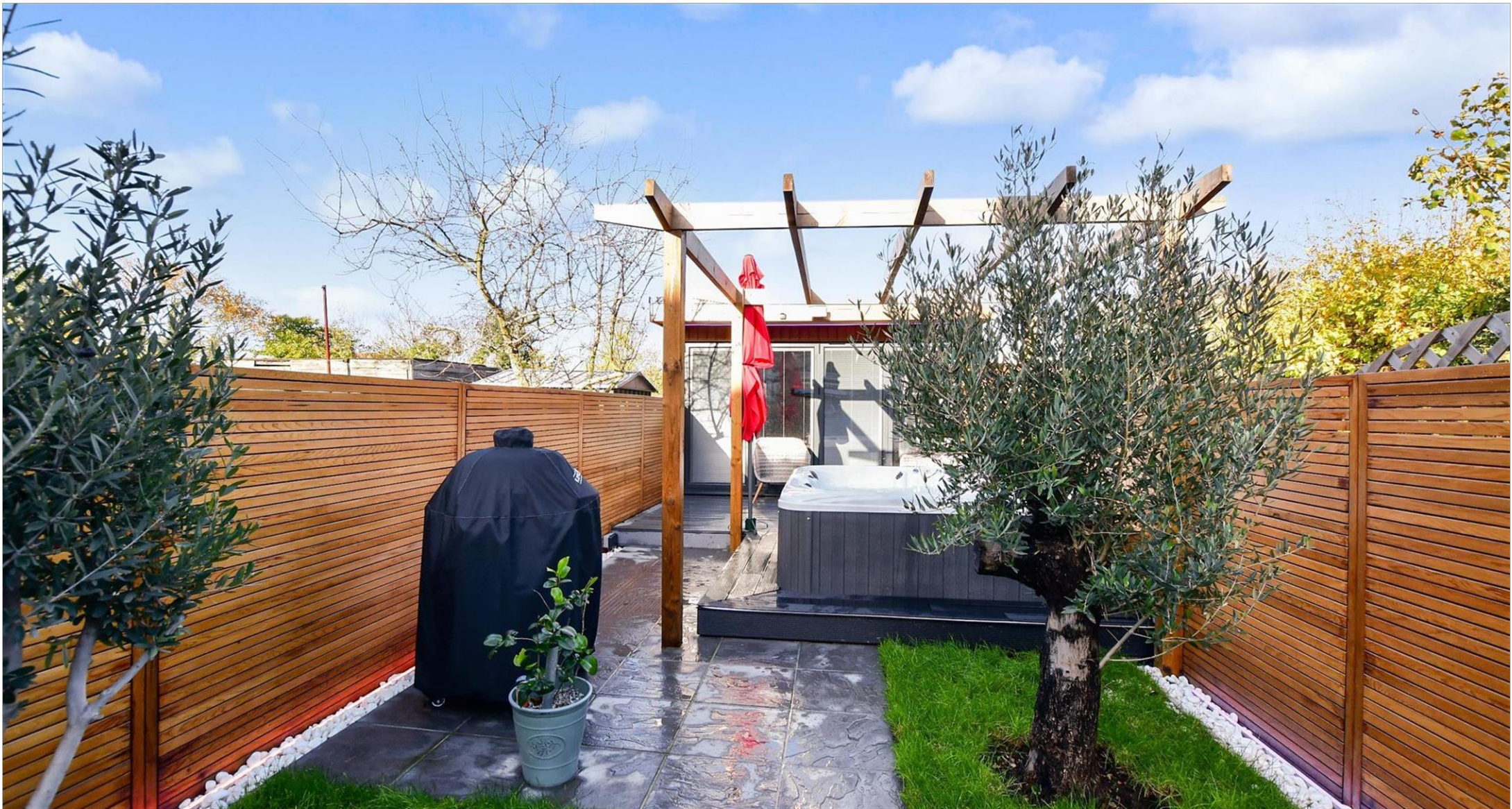
Address

Fulwich Road, Dartford, Kent, DA1



Directions

For directions to this property please contact us.



Wards
Helping you move forwards

Call Dartford Branch 01322 288211 ■ wardsofkent.co.uk



■ Legal advice should be taken to verify fixtures/fittings, planning, alterations and/or lease details ■ Appliances & services are untested, dimensions are approximate and floor plans are not to scale
■ Through a Homewise Home For Life Plan people aged 60+ can secure this property for up to 59% less, by purchasing a Lifetime Lease.



10544972/20230405/LH/LH