



Price
£725,000

Freehold

5x  3x  2x 

**Mill Road, Dartford,
Kent, DA2**

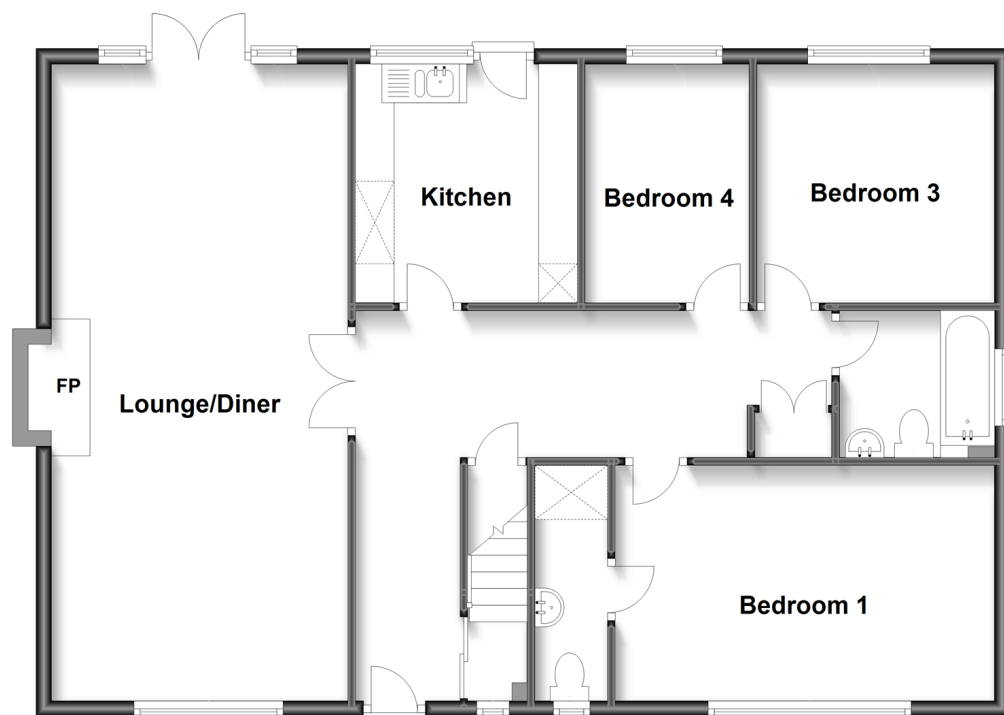
OVER 60?

Secure this property
for up to **59% less!**

Wards
Helping you move forwards

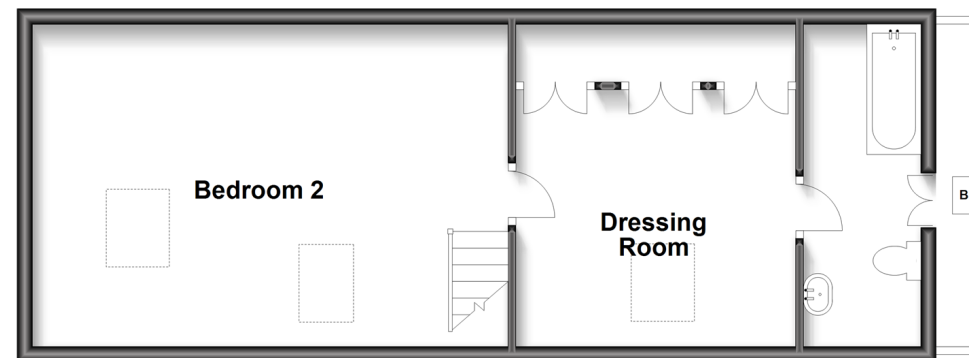
Ground Floor

Approx. 100.1 sq. metres (1077.8 sq. feet)



First Floor

Approx. 47.8 sq. metres (514.0 sq. feet)



Accommodation

GROUND FLOOR

Entrance Hall
 Lounge/Diner: 27'1 x 12'0 (8.26m x 3.66m)
 Kitchen: 9'10 x 9'9 (3.00m x 2.97m)
 Bedroom 5: 9'11 x 9'11 (3.02m x 3.02m)
 Bedroom 4: 10'0 x 6'11 (3.05m x 2.11m)
 Bathroom
 Bedroom 1: 16'0 x 9'11 (4.88m x 3.02m)
 En-Suite Shower Room

FIRST FLOOR

Bedroom 2: 11'11 x 10'8 (3.63m x 3.25m)
 Dressing Room/Bedroom 3: 19'11 x 13'0 (6.07m x 3.97m)
 En-suite Bathroom

CASUALLY CONVERTED OUTBUILDING

Lounge: 18'8 x 18'1 (5.69m x 5.52m)
 Bedroom: 12'9 x 10'3 (3.89m x 3.13m)
 Walk-in Wardrobe
 En-Suite Shower Room

OUTSIDE

Front Garden
 Rear Garden
 Driveway
 Outhouse: 11'10 x 10'2 (3.61m x 3.10m)



Main features

- Charming extended detached bungalow with detached annexe
- Plenty of parking for multiple vehicles
- Semi rural secluded and tranquil location
- Ideal flexible accommodation - perfect for a growing or blended family
- Excellent location for local schools, motorways and amenities



Nearest Schools

Primary Schools: Sutton-at-Hone CofE Primary 1.2 miles, Oakfield Community Primary 1.5 miles
Secondary Schools: Rowhill School 1.7 miles, Dartford Grammar School for Girls 1.7 miles, Dartford Grammar School 1.8 miles



Transport Information

Train Stations: Farningham Road 2.0 miles, Dartford 2.9 miles, Greenhithe 3.0 miles



Address

Mill Road, Dartford, Kent, DA2



Directions

For directions to this property please contact us.



Wards
Helping you move forwards

Call Dartford Branch 01322 288211 ■ wardsofkent.co.uk



- Legal advice should be taken to verify fixtures/fittings, planning, alterations and/or lease details
- Appliances & services are untested, dimensions are approximate and floor plans are not to scale
- Through a Homewise Home For Life Plan people aged 60+ can secure this property for up to 59% less, by purchasing a Lifetime Lease.



10545162/20230622/MP/LH