



Price
£650,000

Freehold

4x  2x  3x 

**Woodland Way,
Greenhithe, Kent, DA9**

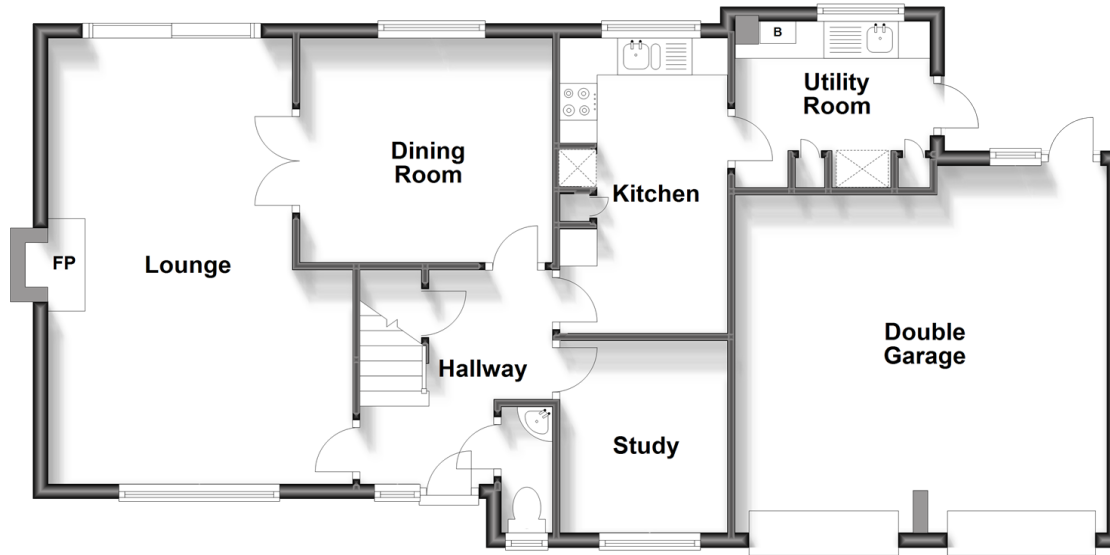
OVER 60?

Secure this property
for up to **59% less!**

Wards
Helping you move forwards

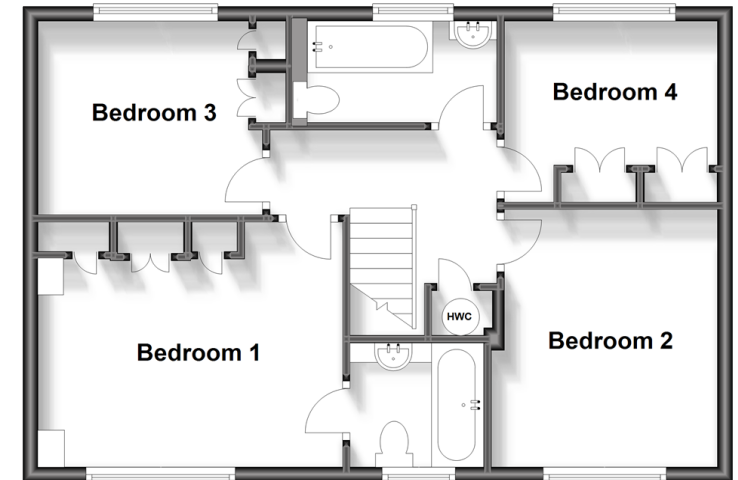
Ground Floor

Approx. 87.5 sq. metres (942.0 sq. feet)



First Floor

Approx. 55.0 sq. metres (591.8 sq. feet)



Accommodation

GROUND FLOOR

Entrance Hall
Cloakroom/WC
Study: 8'6 x 6'9 (2.59m x 2.06m)
Lounge: 19'7 x 13'4 (5.97m x 4.07m)
Dining Room: 10'8 x 9'8 (3.25m x 2.95m)
Kitchen: 12'9 x 7'3 (3.89m x 2.21m)
Utility Area: 8'5 x 7'3 (2.57m x 2.21m)

FIRST FLOOR

Bedroom 1: 13'4 x 10'9 (4.07m x 3.28m)
En-Suite Bathroom
Bedroom 3: 10'4 x 8'6 (3.15m x 2.59m)
Bathroom
Bedroom 4: 9'3 x 7'9 (2.82m x 2.36m)
Bedroom 2: 11'5 x 9'8 (3.48m x 2.95m)

OUTSIDE

Double Garage
Driveway
Rear Garden



Main features

- Good sized detached family home
- Integral double garage and driveway
- Convenient for Bluewater Shopping Centre
- Generous corner plot with plenty of garden for the family to enjoy
- Ideal for commuters with the rail station nearby, and walks along the River Thames



Nearest Schools

Primary Schools: Knockhall Community Primary 0.4 miles, The Craylands School 1.0 miles, Stone St Mary's CofE Primary 1.0 miles

Secondary Schools: Swan Valley Community School 1.5



Transport Information

Train Stations: Greenhithe 0.0 miles, Stone Crossing 0.6 miles, Swanscombe 1.3 miles



Address

Woodland Way, Greenhithe, Kent, DA9



Directions

For directions to this property please contact us.



Wards
Helping you move forwards

Call Dartford Branch 01322 288211 ■ wardsofkent.co.uk



■ Legal advice should be taken to verify fixtures/fittings, planning, alterations and/or lease details ■ Appliances & services are untested, dimensions are approximate and floor plans are not to scale
■ Through a Homewise Home For Life Plan people aged 60+ can secure this property for up to 59% less, by purchasing a Lifetime Lease.



10545206/20240224/MP/LH