



Price

£450,000

Freehold

3x  2x  2x 

**Cedar Road, Dartford,
Kent, DA1**

OVER 60?

Secure this property
for up to **59% less!**

Wards
Helping you move forwards



Main features

- Semi-detached house
- Gardens to front, side and rear
- Very popular central location
- Easy access to Dartford town centre and a short walk to Dartford train station
- Excellent catchment area including Grammar schools

Accommodation

GROUND FLOOR

Entrance Hall
 Lounge: 14'8 x 12'4 (4.47m x 3.76m)
 Kitchen/Diner: 18'1 x 12'4 (5.52m x 3.76m)
 Garden Room: 10'6 x 10'1 (3.20m x 3.08m)
 Utility Room: 5'4 x 4'9 (1.63m x 1.45m)
 Bathroom: 8'1 x 6'4 (2.47m x 1.93m)

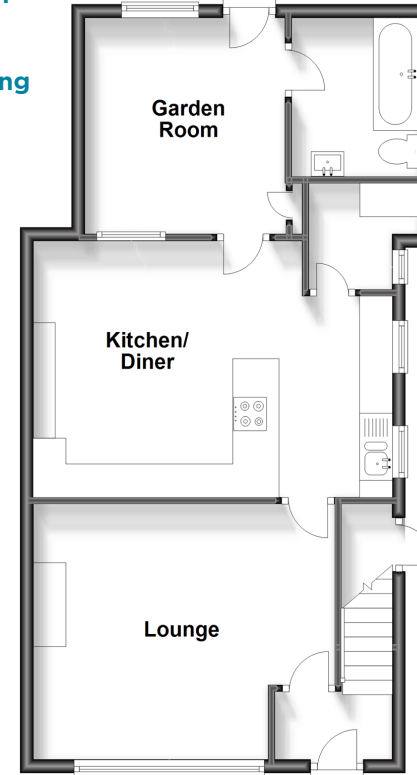
FIRST FLOOR

Landing
 Shower Room: 6'7 x 6'0 (2.01m x 1.83m)
 Bedroom 3: 10'7 x 7'9 (3.23m x 2.36m)
 Bedroom 1: 12'4 x 8'7 (3.76m x 2.62m)
 Bedroom 2: 9'4 x 8'9 (2.85m x 2.67m)

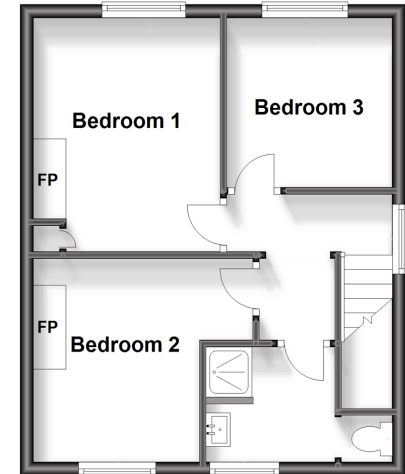
OUTSIDE

Off Road Parking
 Front Garden
 Side Garden
 Rear Garden

Ground Floor
 Approx. 59.2 sq. metres (636.8 sq. feet)



First Floor
 Approx. 36.2 sq. metres (389.8 sq. feet)



Call Dartford - 01322 288211 ■ wardsofkent.co.uk

- Legal advice should be taken to verify fixtures/fittings, planning, alterations and/or lease details
- Appliances & services are untested, dimensions are approximate and floor plans are not to scale
- Through a Homewise Home For Life Plan people aged 60+ can secure this property for up to 59% less, by purchasing a Lifetime Lease.



10545303/20240229/PP/PP