



OVER 60?

Secure this property
for up to **59% less!**

Price

£600,000

Freehold

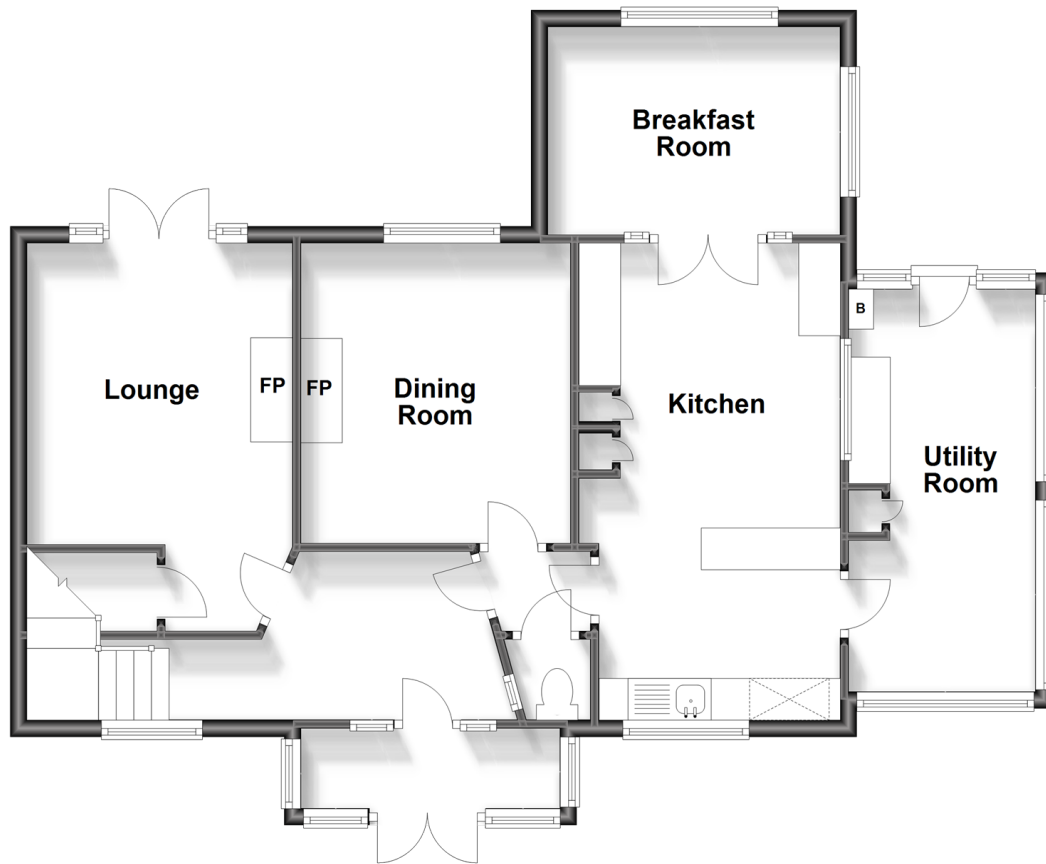
3x  1x  3x 

**Burnt House Lane,
Dartford, Kent, DA2**

Wards
Helping you move forwards

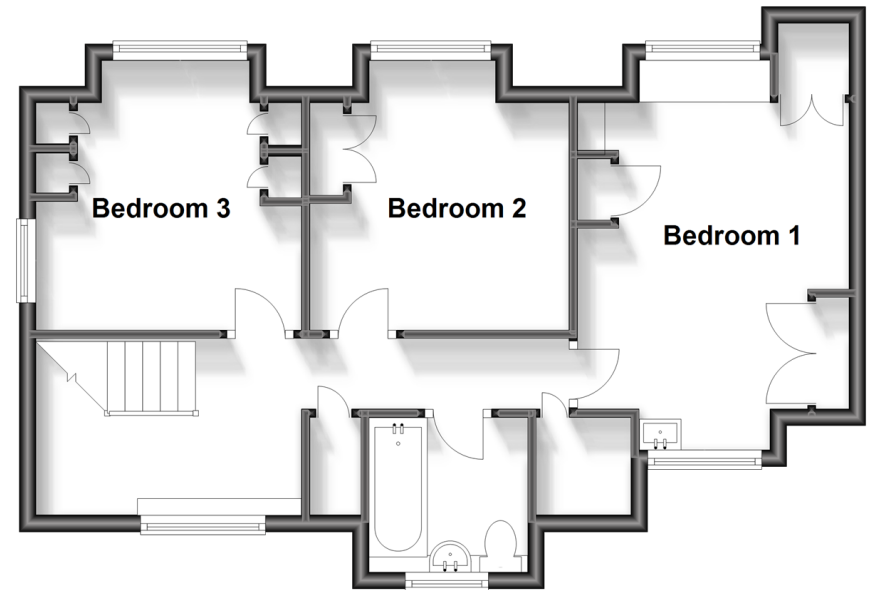
Ground Floor

Approx. 79.7 sq. metres (857.8 sq. feet)



First Floor

Approx. 50.5 sq. metres (543.9 sq. feet)



Accommodation

GROUND FLOOR

Porch
 Entrance Hall
 Separate Toilet
 Lounge: 11'9 x 10'4 (3.58m x 3.15m)
 Dining Room: 11'9 x 10'4 (3.58m x 3.15m)
 Kitchen: 18'5 x 10'4 (5.62m x 3.15m)
 Breakfast Room: 11'5 x 7'4 (3.48m x 2.24m)
 Utility Room: 15'8 x 7'0 (4.78m x 2.14m)

FIRST FLOOR

Landing
 Bathroom: 6'8 x 6'6 (2.03m x 1.98m)
 Bedroom 1: 15'5 x 10'5 (4.70m x 3.18m)
 Bedroom 2: 10'5 x 8'8 (3.18m x 2.64m)
 Bedroom 3: 10'4 x 9'0 (3.15m x 2.75m)

OUTSIDE

Front Garden
 Front Driveway
 First Garage: 21'6 x 9'0 (6.56m x 2.75m)
 Second Garage: 21'6 x 9'6 (6.56m x 2.90m)
 Rear Driveway
 Rear Garden



Main features

- Lovely semi-rural location
- Large driveway to the front, two garages and additional driveway to rear
- Excellent location for country walks
- Just a short drive to local amenities
- Great access for A2/M25/M20 motorways as well as Wilmington and Dartford Grammar schools



Nearest Schools

Primary Schools: Oakfield Community Primary 0.8 miles, Wilmington Primary 0.9 miles
Secondary Schools: The Leigh Technology Academy 1.1 miles, Wilmington Grammar School for Boys and Girls 1.1 miles, Wilmington Academy 1.1 miles



Transport Information

Train Stations: Farningham Road 1.6 miles, Dartford 1.7 miles, Crayford 2.5 miles



Address

Burnt House Lane, Dartford, Kent, DA2



Directions

For directions to this property please contact us.



Wards
Helping you move forwards

Call Dartford Branch 01322 288211 ■ wardsofkent.co.uk



■ Legal advice should be taken to verify fixtures/fittings, planning, alterations and/or lease details ■ Appliances & services are untested, dimensions are approximate and floor plans are not to scale
■ Through a Homewise Home For Life Plan people aged 60+ can secure this property for up to 59% less, by purchasing a Lifetime Lease.



10545359/20231007/LH/PP