



Price
£375,000

Freehold

3x  1x  1x 

**Balmoral Road, Sutton
At Hone, Dartford, Kent,
DA4**

OVER 60?

Secure this property
for up to **59% less!**

Wards
Helping you move forwards



Main features

- **Lovely semi-detached bungalow**
- **Large driveway and garage with service pit**
- **No onward chain**
- **Great location within a small selection of similar bungalows**
- **Short drive to Dartford town centre and the motorway network**

Accommodation

GROUND FLOOR

Entrance Porch

Entrance Hallway

Bedroom 3: 7'5 x 7'1 (2.26m x 2.16m)

Bedroom 2: 11'1 x 9'5 (3.38m x 2.87m)

Bedroom 1: 11'5 x 9'5 (3.48m x 2.87m)

Lounge: 16'4 x 10'9 (4.98m x 3.28m)

Dining Area: 10'9 x 7'11 (3.28m x 2.41m)

Kitchen: 9'2 x 8'9 (2.80m x 2.67m)

Utility Area: 7'11 x 6'2 (2.41m x 1.88m)

Bathroom: 5'6 x 5'1 (1.68m x 1.55m)

Separate Toilet

OUTSIDE

Front Garden

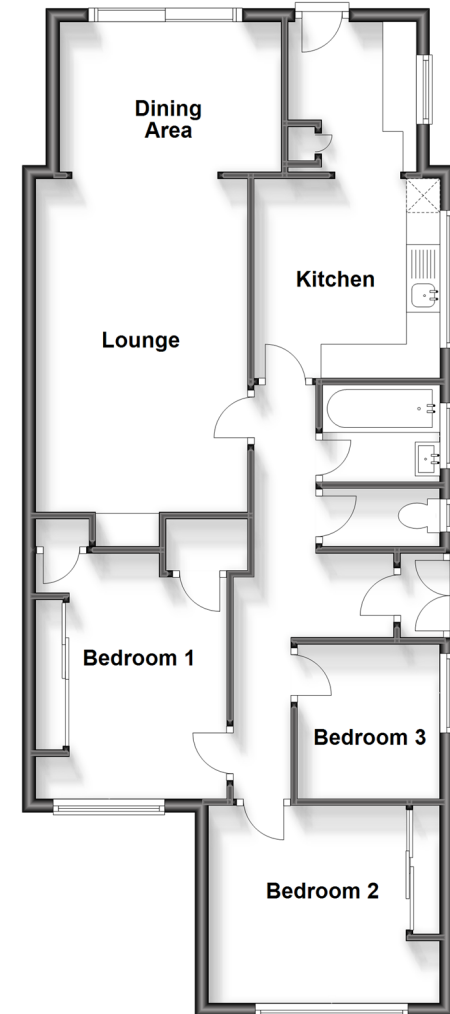
Shared Driveway

Garage

Rear Garden

Workshop/Outbuildings

Ground Floor
Approx. 77.7 sq. metres (836.9 sq. feet)



Call Dartford - 01322 288211 ■ wardsofkent.co.uk

- Legal advice should be taken to verify fixtures/fittings, planning, alterations and/or lease details
- Appliances & services are untested, dimensions are approximate and floor plans are not to scale
- Through a Homewise Home For Life Plan people aged 60+ can secure this property for up to 59% less, by purchasing a Lifetime Lease.



10545362/20231209/MP/PP