



Price
£285,000

Leasehold

2x  2x  1x 

**Oakes Crescent,
Dartford, Kent, DA1**

OVER 60?

Secure this property
for up to **59% less!**

Wards
Helping you move forwards



First Floor

Approx. 62.3 sq. metres (671.0 sq. feet)

Main features

- **Executive first floor flat still under NHBC Warranty**
- **Handy allocated parking space**
- **Luxury porcelain flooring**
- **Both bedrooms are large doubles and balcony leading off the lounge**
- **Ideal for Dartford station, transport links and local amenities**

Accommodation

FIRST FLOOR

Hallway

Bedroom 1: 12'0 x 10'2 (3.66m x 3.10m)

En-suite Shower Room: 7'9 x 4'8 (2.36m x 1.42m)

Kitchen/Diner/Lounge: 20'0 x 16'8 (6.10m x 5.08m)

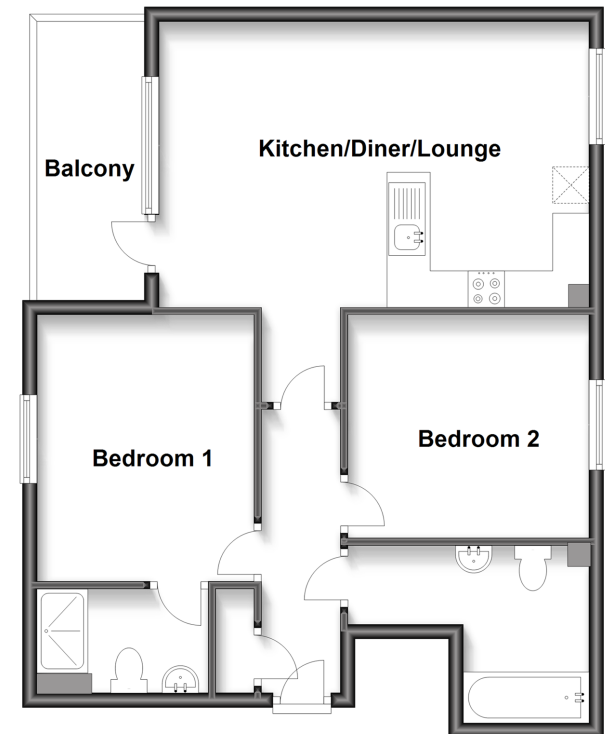
Balcony

Bedroom 2

Bathroom: 10'7 (3.23m) x 8'0 (2.44m) narrowing to 3'5 (1.04m)

OUTSIDE

Allocated Parking Space



Call Dartford - 01322 288211 ■ wardsofkent.co.uk

■ Legal advice should be taken to verify fixtures/fittings, planning, alterations and/or lease details
 ■ Through a Homewise Home For Life Plan people aged 60+ can secure this property for up to 59% less, by purchasing a Lifetime Lease.

■ Appliances & services are untested, dimensions are approximate and floor plans are not to scale



10545418/20240426/BV/LH