



Price
£375,000

Freehold

3x  1x  1x 

**Kemsley Close,
Greenhithe, Kent, DA9**

OVER 60?

Secure this property
for up to **59% less!**

Wards
Helping you move forwards



Main features

- **Lovely semi-detached house**
- **Plenty of parking on the driveway and integral garage**
- **Unusual but flexible layout**
- **Offered for sale with no forward chain**
- **Ideal for A2/M25 motorways as well as Bluewater shopping centre**

Accommodation

GROUND FLOOR

Entrance Hallway
 Bathroom: 6'2 x 4'1 (1.88m x 1.25m)
 Cloakroom
 Bedroom 3: 10'9 x 7'5 (3.28m x 2.26m)
 Bedroom 2: 14'0 x 8'0 (4.27m x 2.44m)
 Integral Garage: 18'2 x 8'1 (5.54m x 2.47m)

FIRST FLOOR

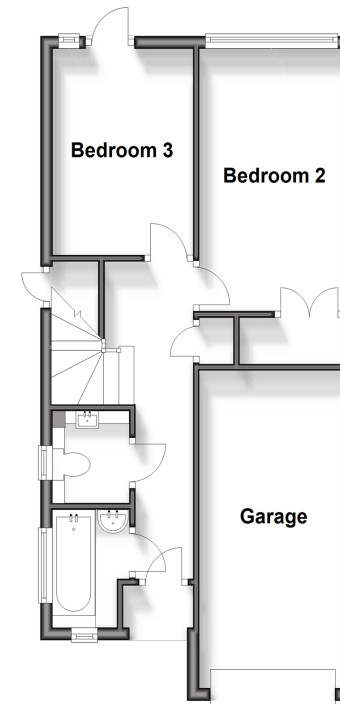
Landing
 Lounge/Diner: 16'0 (4.88m) x 15'3 (4.65m) narrowing to 10'9 (3.28m)
 Bedroom 1: 14'3 x 7'3 (4.35m x 2.21m)
 Kitchen: 11'4 x 8'4 (3.46m x 2.54m)

OUTSIDE

Front Garden
 Driveway

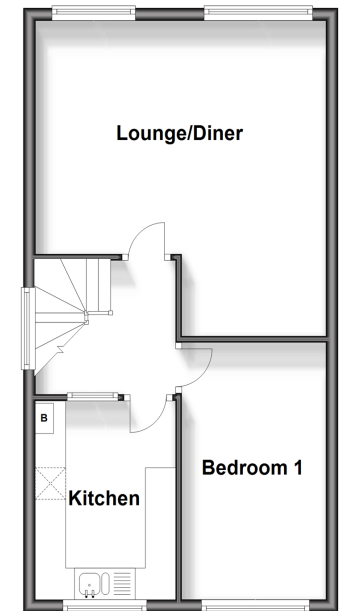
Ground Floor

Approx. 46.2 sq. metres (497.8 sq. feet)



First Floor

Approx. 44.0 sq. metres (473.2 sq. feet)



Call Dartford - 01322 288211 ■ wardsofkent.co.uk

■ Legal advice should be taken to verify fixtures/fittings, planning, alterations and/or lease details
 ■ Through a Homewise Home For Life Plan people aged 60+ can secure this property for up to 59% less, by purchasing a Lifetime Lease.

■ Appliances & services are untested, dimensions are approximate and floor plans are not to scale