



OVER 60?

Secure this property
for up to **59% less!**

Price

£900,000

Freehold

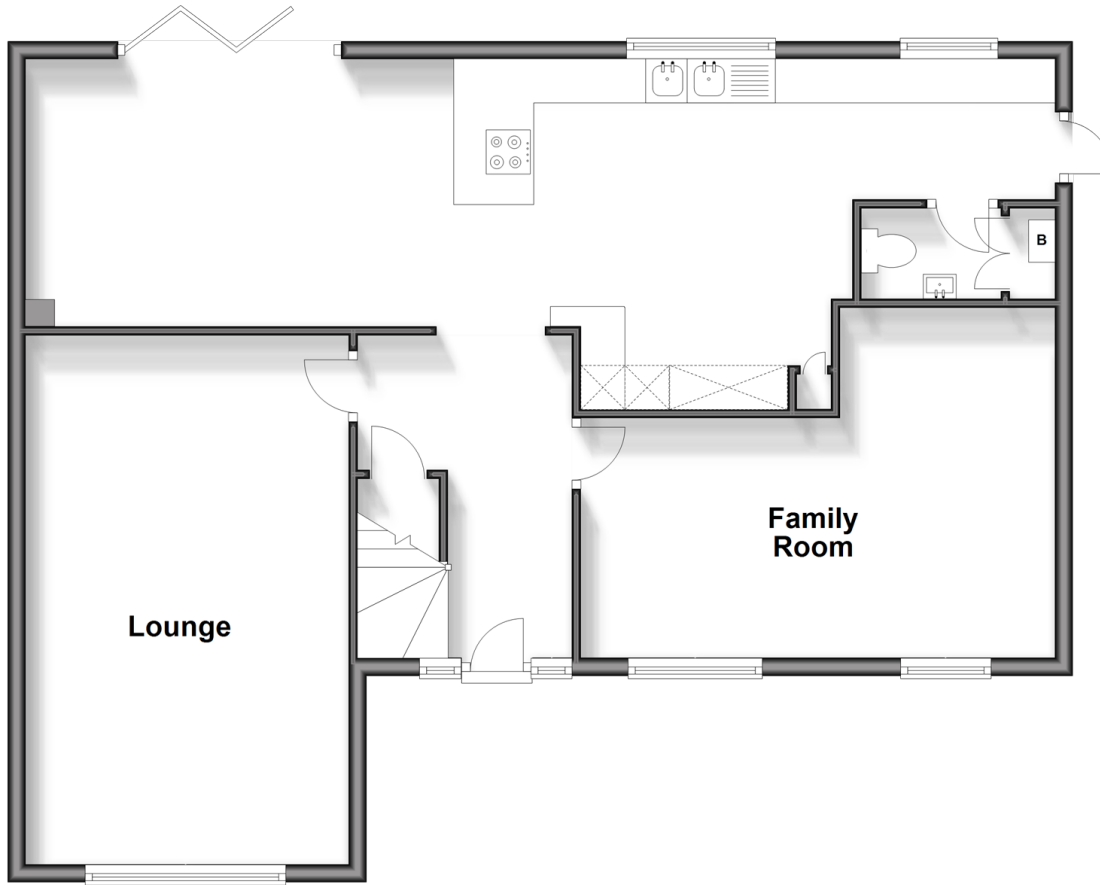
4x  2x  2x 

**Clarendon Place,
Dartford, Kent, DA2**

Wards
Helping you move forwards

Ground Floor

Approx. 87.9 sq. metres (945.7 sq. feet)



First Floor

Approx. 70.4 sq. metres (757.6 sq. feet)



Accommodation

GROUND FLOOR

Hallway

Family Room: 17'7 (5.36m) x 12'10 (3.91m) narrowing to 8'11 (2.72m)

Lounge: 19'11 x 11'11 (6.07m x 3.63m)

Kitchen: 38'2 x 14'4 (11.64m x 4.37m)

Cloakroom

FIRST FLOOR

Bedroom 1: 19'10 x 10'0 up to fitted wardrobes (6.05m x 3.05m)

En-suite Shower Room: 9'10 x 5'6 (3.00m x 1.68m)

Bedroom 4: 9'11 x 6'7 (3.02m x 2.01m)

Family Bathroom: 9'11 x 5'11 (3.02m x 1.80m)

Bedroom 2: 13'3 x 9'10 (4.04m x 3.00m)

Bedroom 3: 13'2 x 9'3 (4.02m x 2.82m)

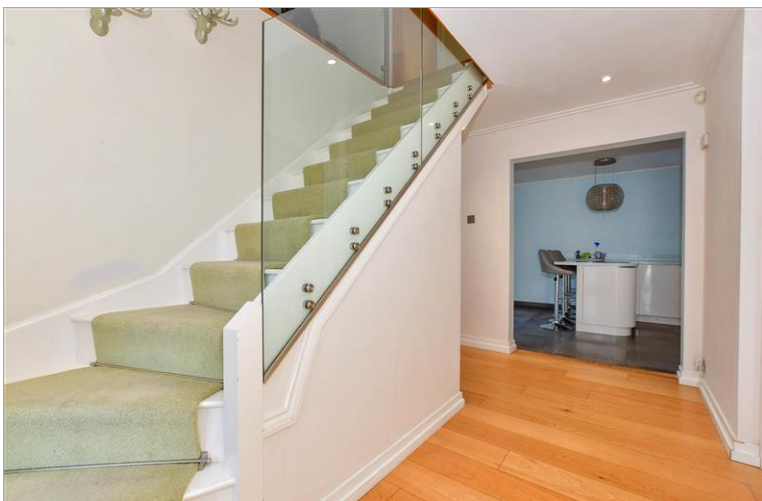
OUTSIDE

Driveway

Front Garden

Double Garage

Rear Garden



Main features

- Executive detached family home
- Modern interior with underfloor heating
- Large driveway for ample cars and double garage
- Ideal for fantastic local schools and motorway links
- Delightful location nestled in a private cul-de-sac with lovely views



Nearest Schools

Primary Schools: Joydens Wood Junior School 0.4 miles, Hextable Primary 0.6 miles, Maypole Primary 0.8 miles

Secondary Schools: Furness School 0.6 miles, Hextable School 0.8 miles, Wilmington Enterprise College 1.1 miles



Transport Information

Train Stations: Bexley 1.7 miles, Swanley 1.8 miles, Crayford 1.9 miles



Address

Clarendon Place, Dartford, Kent, DA2



Directions

For directions to this property please contact us.



Wards
Helping you move forwards

Call Dartford Branch 01322 288211 ■ wardsofkent.co.uk



■ Legal advice should be taken to verify fixtures/fittings, planning, alterations and/or lease details ■ Appliances & services are untested, dimensions are approximate and floor plans are not to scale
■ Through a Homewise Home For Life Plan people aged 60+ can secure this property for up to 59% less, by purchasing a Lifetime Lease.



10545465/20240127/MP/LH