



**OVER 60?**

Secure this property  
for up to **59% less!**

**Price**

**£165,000**

**Leasehold**

1x  1x  1x 

**Selwood Court,  
Churchill Close,  
Dartford, Kent, DA1**

*Wards*  
Helping you move forwards





## Main features

- Top floor flat on a popular development
- Handy allocated parking space
- Plenty of storage including loft space
- Extended lease upon completion
- Ideal for A2/M25 motorways as well as Dartford town centre and station

## Accommodation

### TOP FLOOR

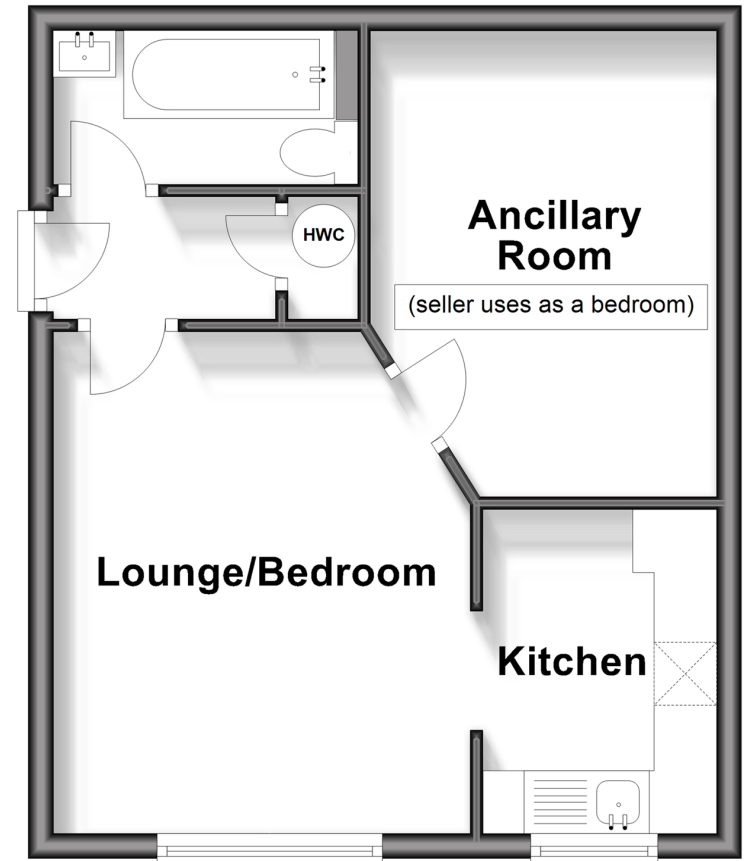
Entrance Hallway  
Bathroom  
Ancillary Room  
Kitchen  
Lounge/Bedroom

### OUTSIDE

Allocated Parking Space  
Communal Garden

## Top Floor

Approx. 33.8 sq. metres (364.0 sq. feet)



**Call Dartford - 01322 288211 ■ [wardsofkent.co.uk](http://wardsofkent.co.uk)**

- Legal advice should be taken to verify fixtures/fittings, planning, alterations and/or lease details
- Appliances & services are untested, dimensions are approximate and floor plans are not to scale
- Through a Homewise Home For Life Plan people aged 60+ can secure this property for up to 59% less, by purchasing a Lifetime Lease.



10545494/20240217/MP/LH