



**OVER 60?**

Secure this property  
for up to **59% less!**

**Price**

**£235,000**

**Leasehold**

1x  1x  1x 

**Vauxhall Place, Dartford,  
Kent, DA1**

*Wards*  
Helping you move forwards



## Main features

- Lovely, contemporary open plan third floor flat with balcony
- Central town location
- Close proximity to Dartford station
- Short drive to motorway network and Crayford station
- Short walk to many high street shops and amenities

## Accommodation

### THIRD FLOOR

Entrance Hallway

Bathroom: 7'1 x 5'5 (2.16m x 1.65m)

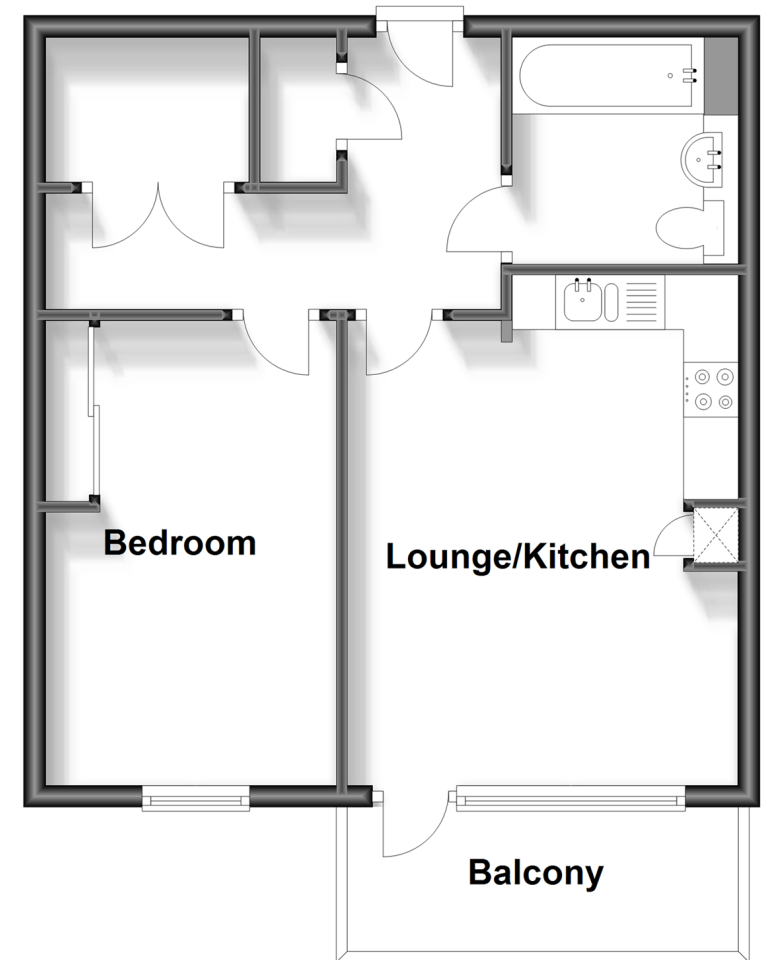
Lounge/Kitchen: 15'5 x 11'7 (4.70m x 3.53m)

Balcony

Bedroom: 13'9 x 8'6 (4.19m x 2.59m)

## Third Floor

Approx. 43.3 sq. metres (466.0 sq. feet)



**Call Dartford - 01322 288211 ■ [wardsofkent.co.uk](http://wardsofkent.co.uk)**

- Legal advice should be taken to verify fixtures/fittings, planning, alterations and/or lease details
- Appliances & services are untested, dimensions are approximate and floor plans are not to scale
- Through a Homewise Home For Life Plan people aged 60+ can secure this property for up to 59% less, by purchasing a Lifetime Lease.



10545498/20240309/MP/PP