



OVER 60?

Secure this property
for up to **59% less!**

Price

£400,000

Freehold

4x  2x  1x 

**Cressener Place,
Burnham Road,
Dartford, Kent, DA1**

Wards
Helping you move forwards



Main features

- Delightful family terraced house
- Handy allocated parking
- Immaculate condition throughout
- Desirable downstairs cloakroom and en-suite shower room to main bedroom
- Ideal for Grammar schools, town centre and Dartford station

Accommodation

GROUND FLOOR

Hallway

Cloakroom

Kitchen: 15'0 x 7'10 (4.58m x 2.39m)

Lounge: 12'6 x 7'10 (3.81m x 2.39m)

Office/Bedroom 4: 11'4 x 6'10 (3.46m x 2.08m)

FIRST FLOOR

Landing

Bathroom: 7'11 x 6'5 (2.41m x 1.96m)

Bedroom 2: 11'11 x 8'3 (3.63m x 2.52m)

Bedroom 1: 13'2 x 8'4 (4.02m x 2.54m)

En-suite Shower Room: 7'6 x 3'0 (2.29m x 0.92m)

Bedroom 3: 9'0 x 6'5 (2.75m x 1.96m)

OUTSIDE

Front Garden

Rear Garden

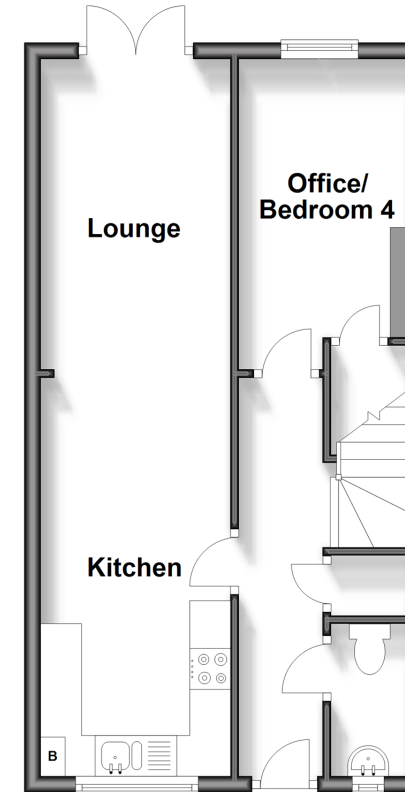
Allocated Parking Space

Call Dartford - 01322 288211 ■ wardsofkent.co.uk

- Legal advice should be taken to verify fixtures/fittings, planning, alterations and/or lease details
- Appliances & services are untested, dimensions are approximate and floor plans are not to scale
- Through a Homewise Home For Life Plan people aged 60+ can secure this property for up to 59% less, by purchasing a Lifetime Lease.

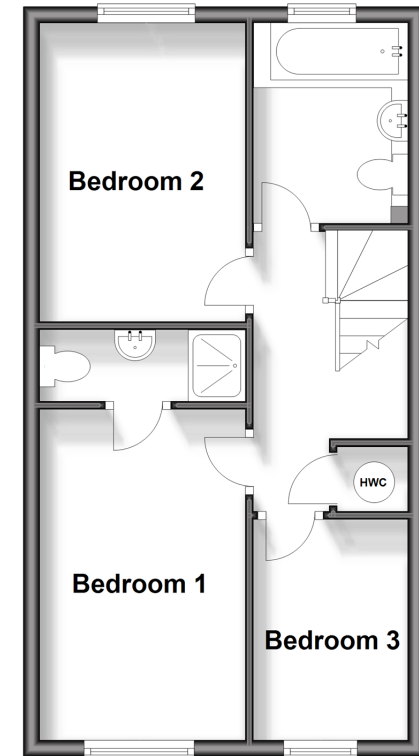
Ground Floor

Approx. 39.6 sq. metres (426.4 sq. feet)



First Floor

Approx. 39.6 sq. metres (426.4 sq. feet)



10545522/20240323/MP/LH