



Price
£160,000

Leasehold

1x  1x  1x 

**Parr Court, Manor Road,
Swanscombe, Kent,
DA10**

OVER 60?

Secure this property
for up to **59% less!**

Wards
Helping you move forwards



Main features

- Spacious second floor flat
- Allocated parking space
- Long lease
- Choice of Swanscombe or Ebbsfleet rail links
- Short drive to Bluewater shopping centre

Accommodation

SECOND FLOOR

Entrance Hallway

Kitchen: 6'5 x 6'5 (1.96m x 1.96m)

Lounge: 13'6 x 10'4 (4.12m x 3.15m)

Bedroom: 13'7 x 8'8 (4.14m x 2.64m)

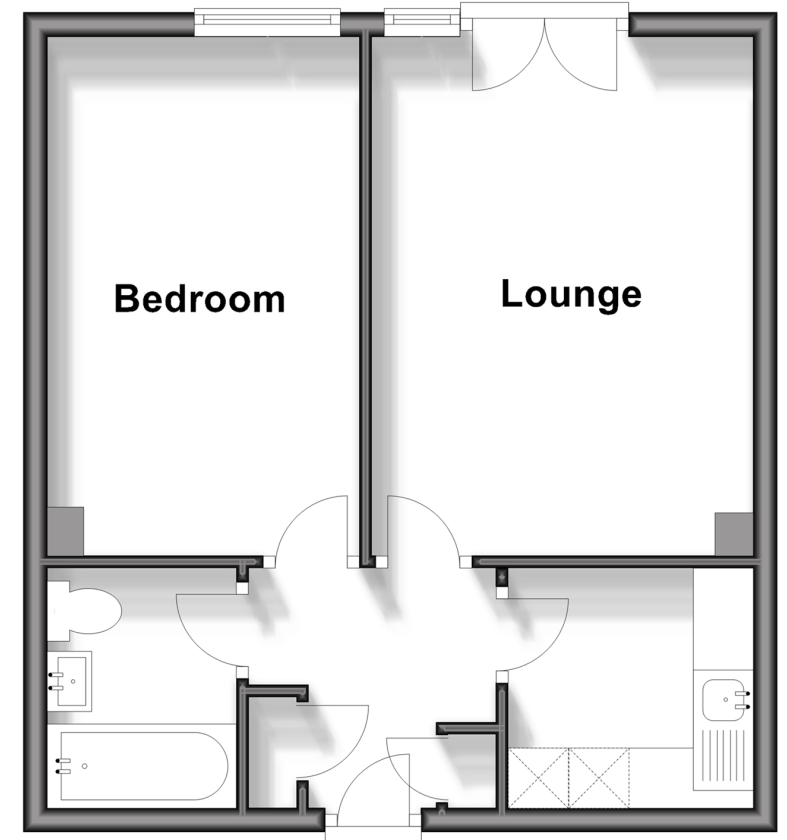
Bathroom: 6'5 x 5'5 (1.96m x 1.65m)

OUTSIDE

Allocated Parking Space

Second Floor

Approx. 37.7 sq. metres (405.8 sq. feet)



Call Dartford - 01322 288211 ■ wardsofkent.co.uk

- Legal advice should be taken to verify fixtures/fittings, planning, alterations and/or lease details
- Appliances & services are untested, dimensions are approximate and floor plans are not to scale
- Through a Homewise Home For Life Plan people aged 60+ can secure this property for up to 59% less, by purchasing a Lifetime Lease.



10545524/20240411/LH/PP