



**OVER 60?**

Secure this property  
for up to **59% less!**

**Price**

**£325,000**

**Leasehold**

2x  2x  1x 

**Mill Pond Road,  
Dartford, Kent, DA1**

*Wards*  
Helping you move forwards





## Main features

- Fabulous, contemporary second floor flat with en-suite
- One allocated parking space
- Large private patio balcony
- Excellent central location within easy walking distance of Dartford train station
- Many local amenities including fitness centres and local shops

## Accommodation

### SECOND FLOOR

Entrance Hallway

Bathroom: 7'4 x 6'6 (2.24m x 1.98m)

Lounge/Diner: 15'7 x 11'2 (4.75m x 3.41m)

Kitchen Area: 11'2 x 7'6 (3.41m x 2.29m)

Terrace

Bedroom 2: 10'9 x 10'2 (3.28m x 3.10m)

Bedroom 1: 19'6 x 9'9 (5.95m x 2.97m)

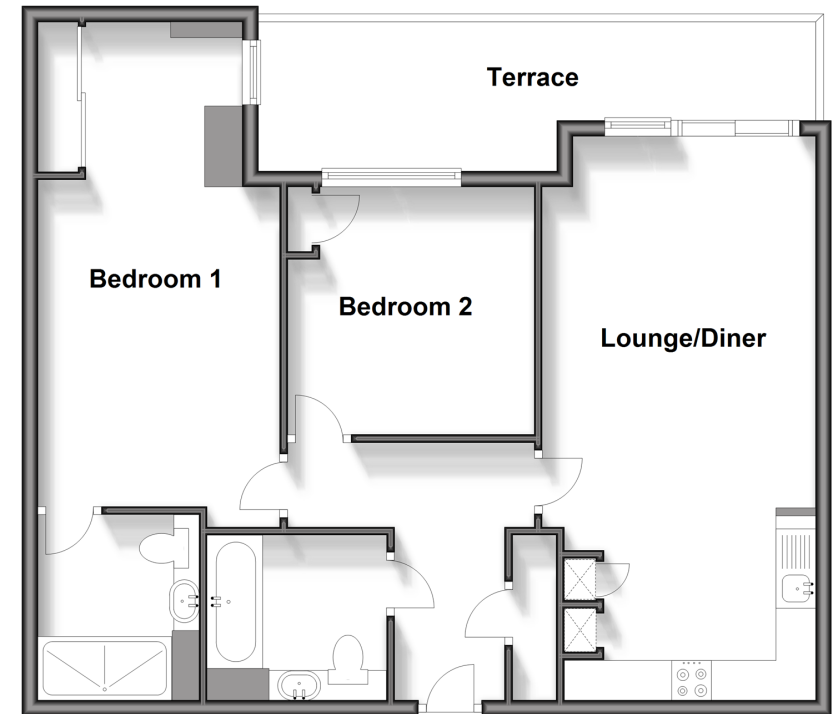
En-suite Shower Room: 7'2 x 6'6 (2.19m x 1.98m)

### OUTSIDE

Allocated Parking Space

### Second Floor

Approx. 70.5 sq. metres (759.3 sq. feet)



**Call Dartford - 01322 288211 ■ [wardsofkent.co.uk](http://wardsofkent.co.uk)**

- Legal advice should be taken to verify fixtures/fittings, planning, alterations and/or lease details
- Appliances & services are untested, dimensions are approximate and floor plans are not to scale
- Through a Homewise Home For Life Plan people aged 60+ can secure this property for up to 59% less, by purchasing a Lifetime Lease.



10545542/20240325/MP/PP