



**Price**  
**£200,000**

**Leasehold**

1x  1x  1x 

**Wilmington Place,  
Hawley Road, Dartford,  
Kent, DA1**

**OVER 60?**

Secure this property  
for up to **59% less!**

*Wards*  
Helping you move forwards





## Main features

- Lovely ground floor flat
- Allocated parking in gated courtyard
- Modern aspect throughout
- Excellent access to local motorway network M20/M25
- Short drive into Dartford town centre and it's many amenities

## Accommodation

### GROUND FLOOR

Entrance Hallway

Bathroom: 7'5 x 5'4 (2.26m x 1.63m)

Bedroom: 11'0 x 10'5 (3.36m x 3.18m)

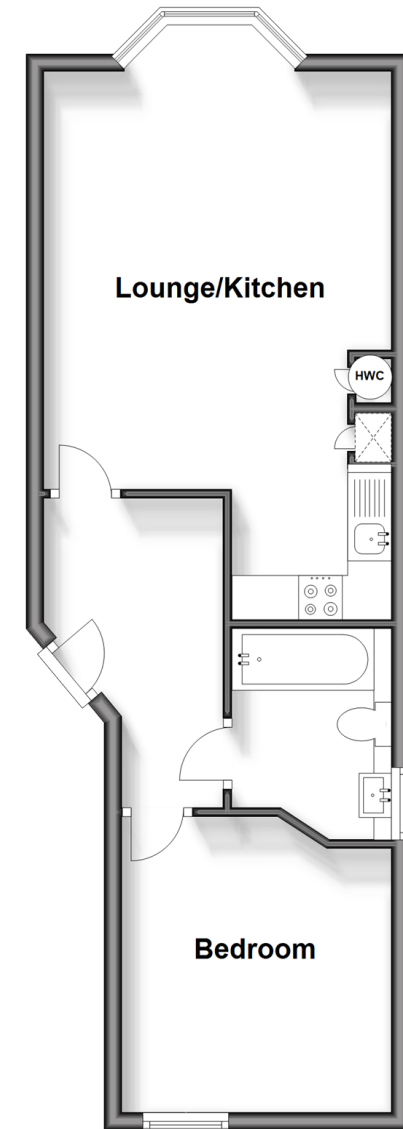
Lounge/Kitchen Areas: 21'5 (6.53m) x 13'1 (3.99m) narrowing to 4'8 (1.42m)

### OUTSIDE

Allocated Parking Space

## Ground Floor

Approx. 42.7 sq. metres (459.4 sq. feet)



**Call Dartford - 01322 288211 ■ [wardsofkent.co.uk](http://wardsofkent.co.uk)**

- Legal advice should be taken to verify fixtures/fittings, planning, alterations and/or lease details
- Appliances & services are untested, dimensions are approximate and floor plans are not to scale
- Through a Homewise Home For Life Plan people aged 60+ can secure this property for up to 59% less, by purchasing a Lifetime Lease.



10545568/20240501/MP/PP