



**Price**

**£150,000**

**Leasehold**

1x  1x  1x 

**Victoria Drive,  
Southdowns South  
Darenth, Dartford, Kent,  
DA4**

**OVER 60?**

Secure this property  
for up to **59% less!**

*Wards*  
Helping you move forwards





## Main features

- First floor maisonette with stunning views
- Nestled in a quiet retirement village
- Handy community parking space
- Lot's of on site amenities including 24 hour nurse, clubhouse, corner shop and more
- Offered for sale with no forward chain

## Accommodation

### FIRST FLOOR

Hallway

Bedroom: 11'7 x 10'11 (3.53m x 3.33m)

Living Room: 12'5 x 11'8 (3.79m x 3.56m)

Kitchen: 8'11 x 7'9 (2.72m x 2.36m)

Bathroom: 9'6 x 5'6 (2.90m x 1.68m)

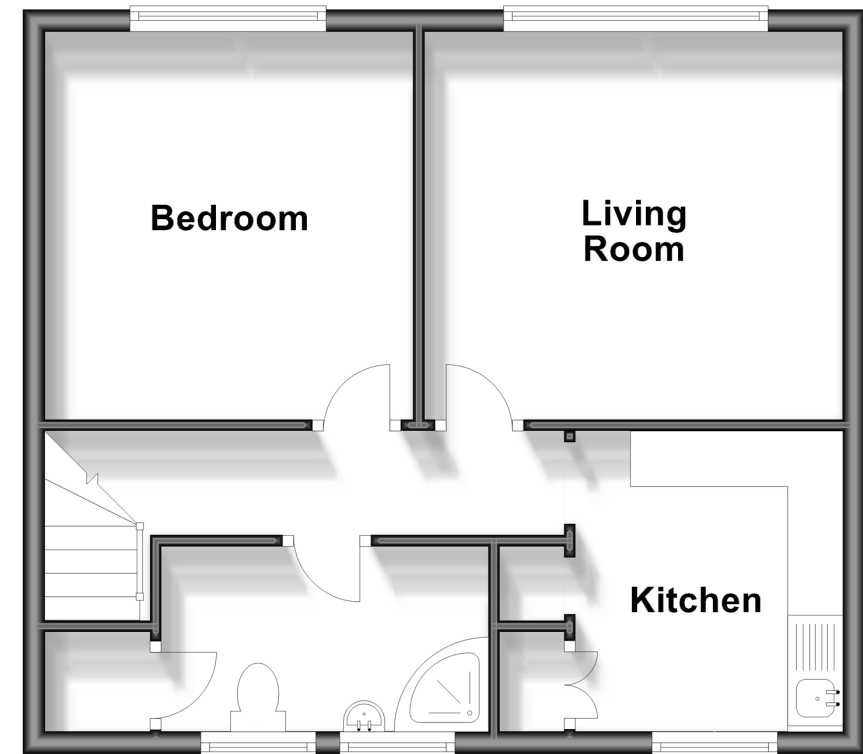
### OUTSIDE

Community Parking Space

Communal Gardens

## First Floor

Approx. 45.7 sq. metres (491.5 sq. feet)



**Call Dartford - 01322 288211 ■ [wardsofkent.co.uk](http://wardsofkent.co.uk)**

- Legal advice should be taken to verify fixtures/fittings, planning, alterations and/or lease details
- Appliances & services are untested, dimensions are approximate and floor plans are not to scale
- Through a Homewise Home For Life Plan people aged 60+ can secure this property for up to 59% less, by purchasing a Lifetime Lease.



10545581/20240504/MP/LH