



Price
£475,000

Freehold

3x  2x  2x 

**The Rise, Greenhithe,
Kent, DA9**

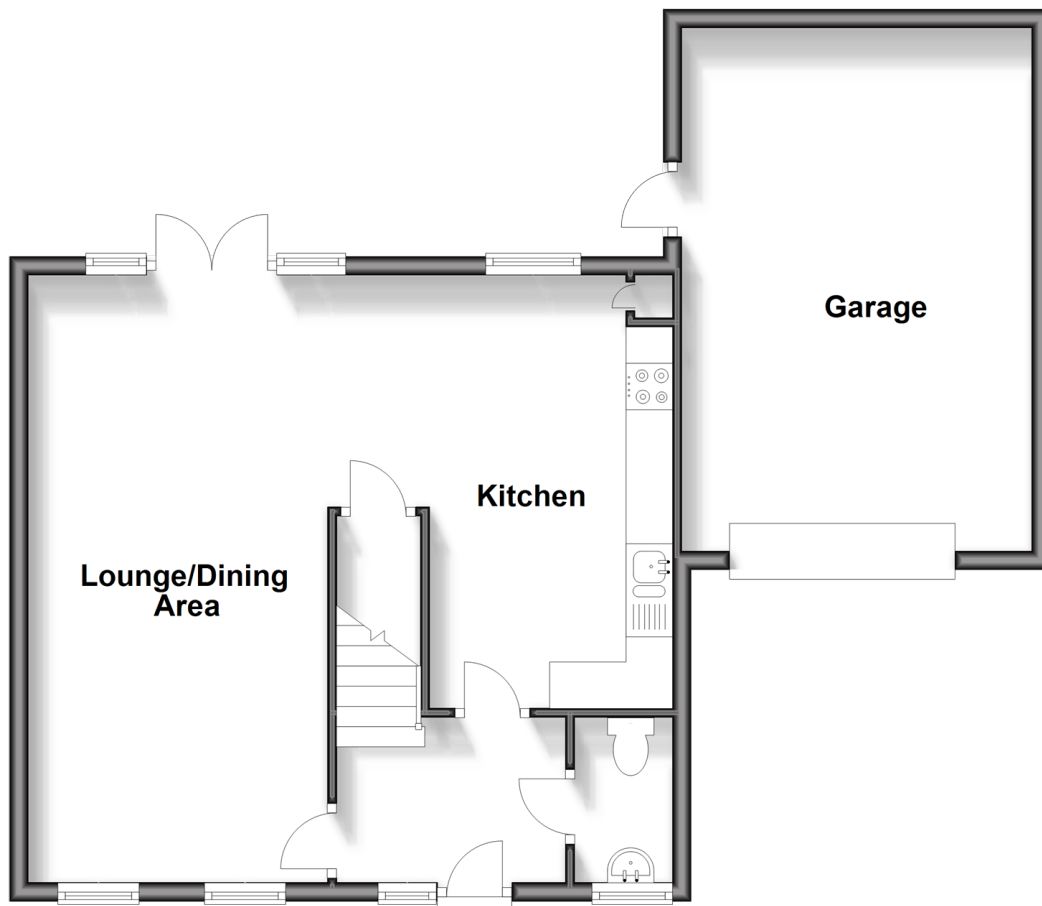
OVER 60?

Secure this property
for up to **59% less!**

Wards
Helping you move forwards

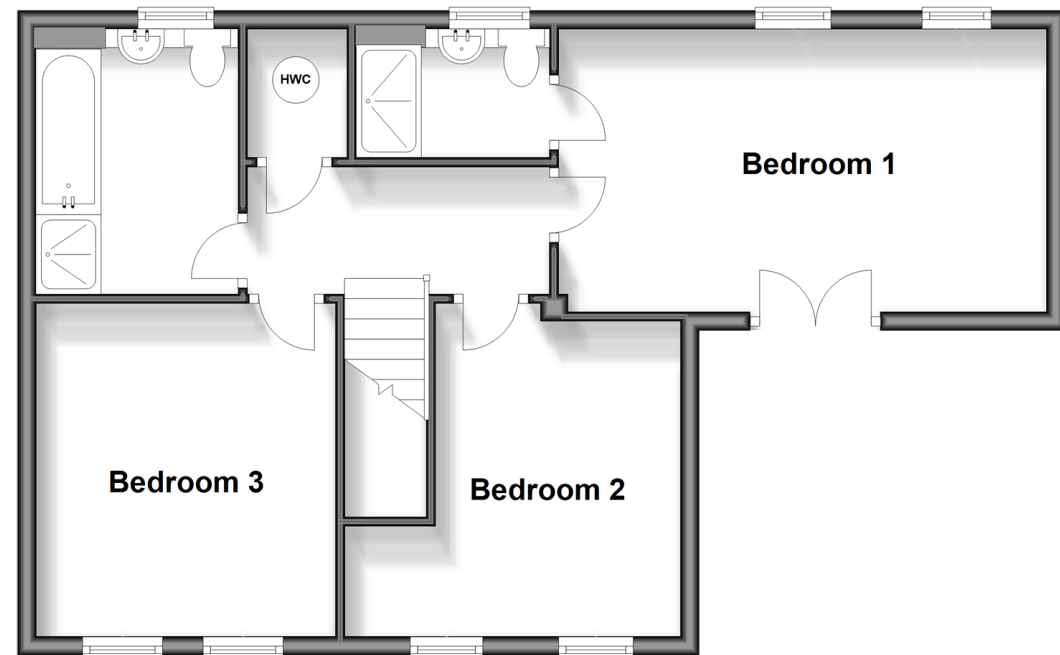
Ground Floor

Approx. 66.7 sq. metres (718.0 sq. feet)



First Floor

Approx. 57.2 sq. metres (615.7 sq. feet)



Accommodation

GROUND FLOOR

Hallway

Cloakroom: 5'10 x 3'5 (1.78m x 1.04m)

Kitchen: 15'2 x 7'6 (4.63m x 2.29m)

Lounge/Dining Area: 22'0 (6.71m) x 13'0 (3.97m)
narrowing to 10'6 (3.20m)

FIRST FLOOR

Landing

Bedroom 3: 11'9 x 10'9 (3.58m x 3.28m)

Bathroom: 9'4 x 7'1 (2.85m x 2.16m)

Bedroom 1: 17'2 x 10'0 (5.24m x 3.05m)

En-suite shower room: 6'8 x 5'0 (2.03m x 1.53m)

Bedroom 2: 11'5 x 11'2 (3.48m x 3.41m)

OUTSIDE

Front Garden

Driveway

Garage

Rear Garden



Main features

- Delightful link-detached family House on Waterstone Park development
- Handy garage and driveway
- En-suite shower to main bedroom and downstairs cloakroom
- Desirable open plan living with high ceilings
- Ideal for local rail station and bus stops as well as A2/M25 motorways



Nearest Schools

Primary Schools: Knockhall Community Primary 0.5 miles, Stone St Mary's CofE Primary 0.6 miles, The Craylands School 1.0 miles
Secondary Schools: Swan Valley Community School 1.5 miles, The Leigh Technology Academy 1.8 miles



Transport Information

Train Stations: Greenhithe 0.4 miles, Stone Crossing 0.5 miles, Swanscombe 1.4 miles



Address

The Rise, Greenhithe, Kent, DA9



Directions

For directions to this property please contact us.



Call Dartford Branch 01322 288211 ■ wardsofkent.co.uk



- Legal advice should be taken to verify fixtures/fittings, planning, alterations and/or lease details
- Appliances & services are untested, dimensions are approximate and floor plans are not to scale
- Through a Homewise Home For Life Plan people aged 60+ can secure this property for up to 59% less, by purchasing a Lifetime Lease.



10545587/20240515/BV/LH