



OVER 60?

Secure this property
for up to **59% less!**

Price
£375,000

Freehold

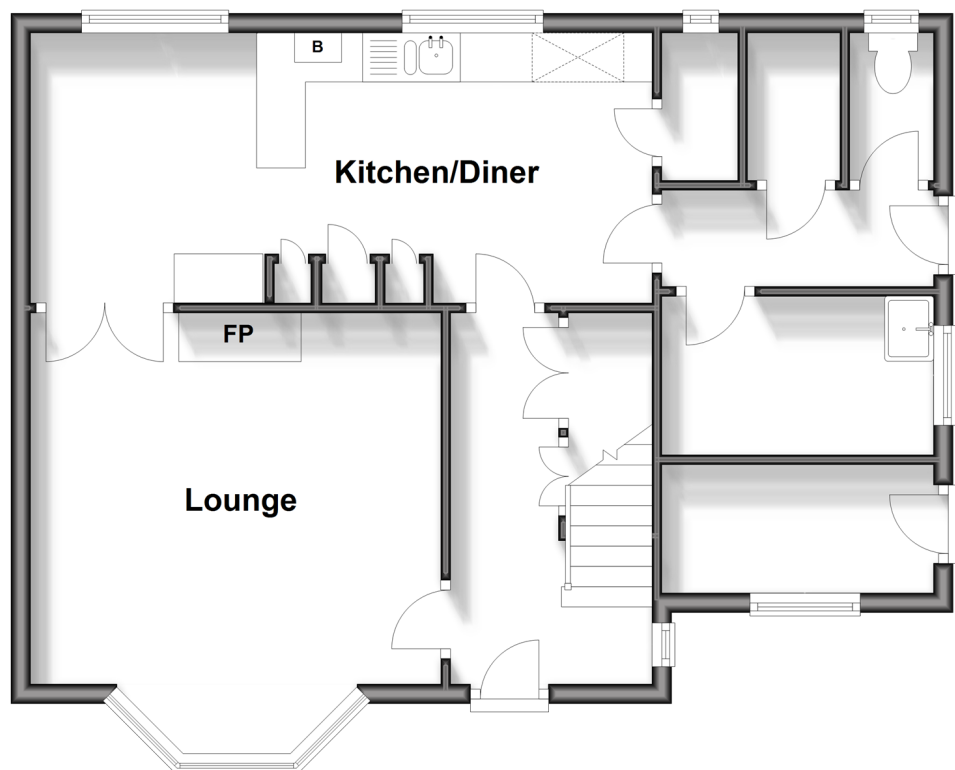
3x  1x  2x 

**Kings Close, Kingsdown,
Deal, Kent, CT14**

Wards
Helping you move forwards

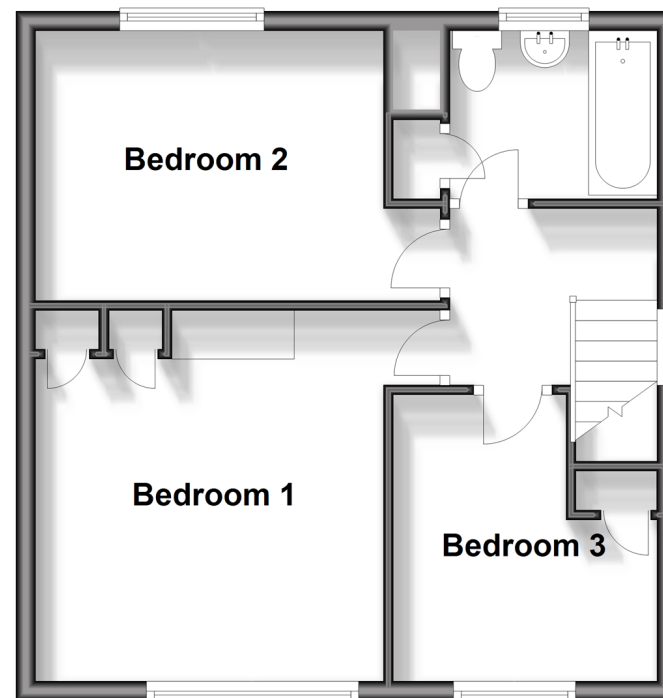
Ground Floor

Approx. 59.1 sq. metres (636.2 sq. feet)



First Floor

Approx. 42.3 sq. metres (454.8 sq. feet)



Accommodation

GROUND FLOOR

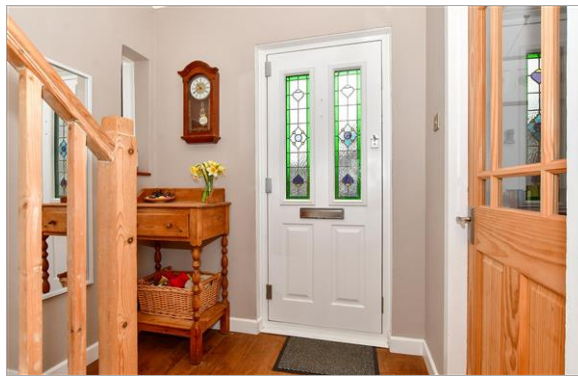
Entrance Hallway
 Lounge : 13'10 x 12'4 (4.22m x 3.76m)
 Kitchen/Diner: 20'8 x 9'0 (6.30m x 2.75m)
 Cloakroom
 Utility Area : 8'11 x 5'2 (2.72m x 1.58m)

FIRST FLOOR

Landing
 Bathroom
 Bedroom 2: 11'7 x 9'1 (3.53m x 2.77m)
 Bedroom 1: 12'8 x 11'6 (3.86m x 3.51m)
 Bedroom 3: 10'1 x 9'1 (3.08m x 2.77m)

OUTSIDE

Front and Rear Gardens
 Driveway



Main features

- Large rear garden with summer house and workshop
- Far stretching field views with sea glimpse
- Driveway parking with EV charge point
- Situated in a quiet cul-de-sac only yards from Ofsted outstanding Kingsdown primary school
- Many updates completed including new kitchen, windows, solar panels only a few years ago



Nearest Schools

Primary Schools: Kingsdown and Ringwould CofE Primary 0.1 miles, The Downs C of E Primary 2.3 miles, Deal Parochial C of E Primary 2.3 miles

Secondary Schools: Learning Opportunities Centre



Transport Information

Train Stations: Walmer 1.8 miles, Martin Mill 3.0 miles, Deal 3.4 miles



Address

Kings Close, Kingsdown, Deal, Kent, CT14



Directions

For directions to this property please contact us.



Call Deal Branch 01304 361420 ■ wardsofkent.co.uk



- Legal advice should be taken to verify fixtures/fittings, planning, alterations and/or lease details
- Appliances & services are untested, dimensions are approximate and floor plans are not to scale
- Through a Homewise Home For Life Plan people aged 60+ can secure this property for up to 59% less, by purchasing a Lifetime Lease.



10623730/20240406/BG/LB1