



**Price**  
**£300,000**

**Leasehold**

2x  2x  1x 

**Leelands House, Grams  
Road, Deal, Kent, CT14**

**OVER 60?**

Secure this property  
for up to **59% less!**

*Wards*  
Helping you move forwards





## Main features

- First floor apartment with large lounge/diner with distant sea views
- Garage en bloc
- Spacious Cellar
- BBQ in communal garden,
- 4 piece bathroom suite and en suite toilet to Bedroom 1

## Accommodation

### FIRST FLOOR

Entrance Hall

Lounge/Diner: 29'4 x 16'3 (8.95m x 4.96m)

Kitchen : 11'1 x 10'9 (3.38m x 3.28m)

Bedroom 2 : 15'2 x 11'3 (4.63m x 3.43m)

Bedroom 1: 13'5 x 13'3 (4.09m x 4.04m)

En Suite Toilet

Bathroom

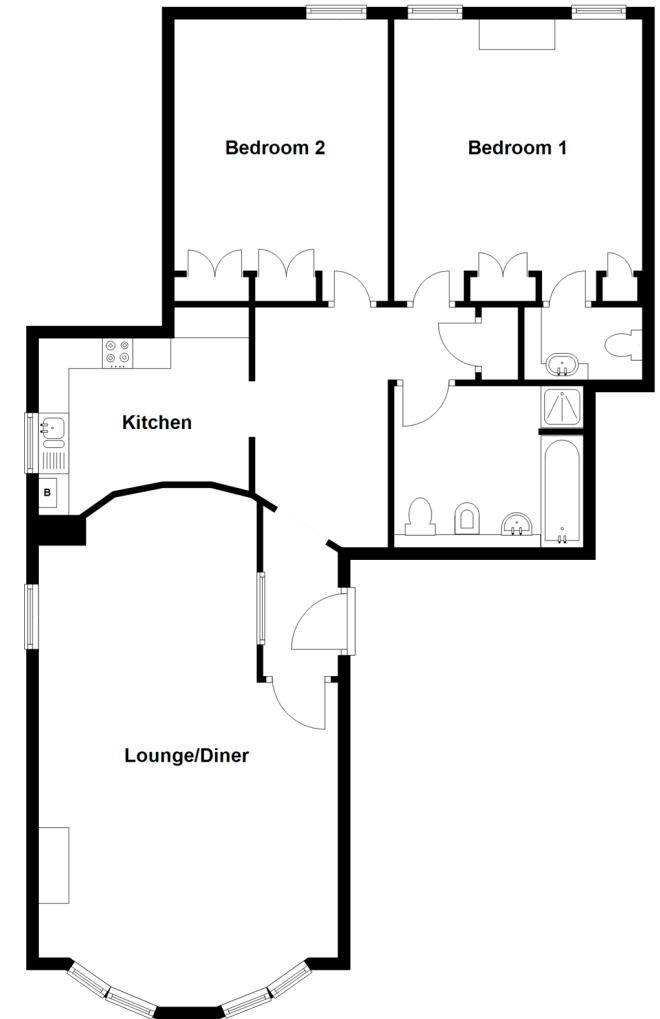
### OUTSIDE

Communal Gardens

Garage en bloc

### First Floor

Approx. 108.1 sq. metres (1164.0 sq. feet)



**Call Deal - 01304 361420 ■ [wardsofkent.co.uk](http://wardsofkent.co.uk)**

- Legal advice should be taken to verify fixtures/fittings, planning, alterations and/or lease details
- Appliances & services are untested, dimensions are approximate and floor plans are not to scale
- Through a Homewise Home For Life Plan people aged 60+ can secure this property for up to 59% less, by purchasing a Lifetime Lease.



10627736/20240418/BG/LW