



Price
£390,000

Freehold

4x  2x  2x 

**Peter Street, Deal, Kent,
CT14**

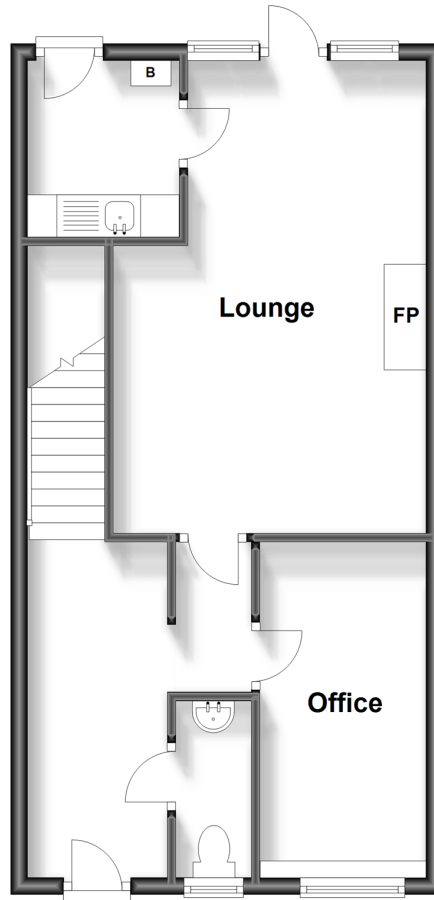
OVER 60?

Secure this property
for up to **59% less!**

Wards
Helping you move forwards

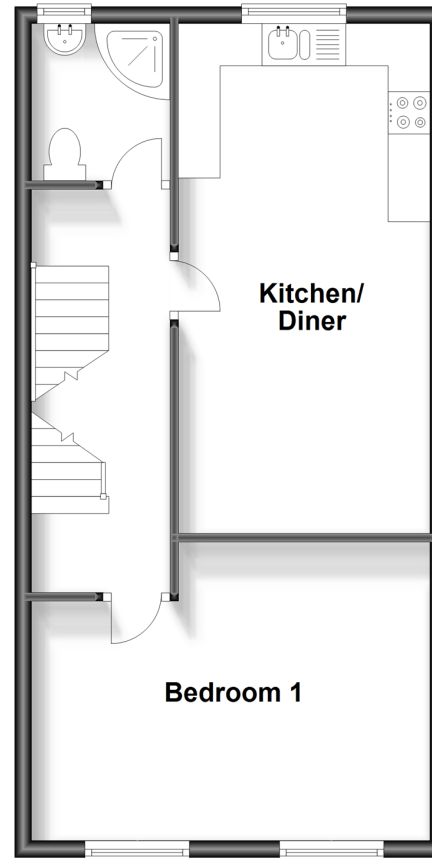
Split Level Ground Floor

Approx. 46.1 sq. metres (495.8 sq. feet)



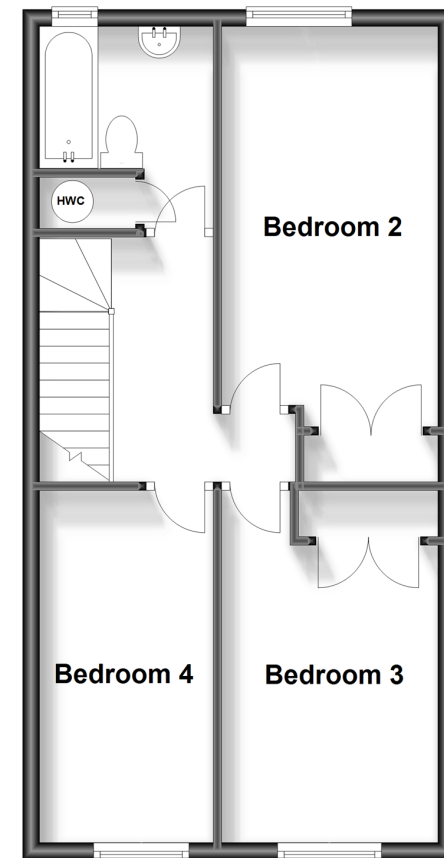
First Floor

Approx. 46.1 sq. metres (495.8 sq. feet)



Second Floor

Approx. 46.1 sq. metres (495.8 sq. feet)



Accommodation

SPLIT LEVEL GROUND FLOOR

Entrance Hallway

Cloakroom

Office : 13'10 x 6'6 (4.22m x 1.98m)

Lounge : 18'5 x 12'3 (5.62m x 3.74m)

Utility : 6'10 x 6'0 (2.08m x 1.83m)

FIRST FLOOR

Landing

Shower Room

Kitchen/Diner : 19'10 x 10'2 (6.05m x 3.10m)

Bedroom 1: 15'9 x 12'6 (4.80m x 3.81m)

SECOND FLOOR

Landing

Bathroom

Bedroom 2: 16'11 x 8'7 (5.16m x 2.62m)

Bedroom 3: 11'10 x 8'5 (3.61m x 2.57m)

Bedroom 4: 13'8 x 6'11 (4.17m x 2.11m)

OUTSIDE

Front and Rear Gardens

Parking to the Rear



Main features

- Located on a very quiet street with no onward chain
- Garden and gated parking to the rear
- Spacious and flexible accommodation throughout
- Original layout has been adapted to create a large social kitchen/diner
- The town centre and beach are only a short walk away



Nearest Schools

Primary Schools: Sandown School 0.1 miles, Warden House Primary 1.0 miles, Deal Parochial C of E Primary 1.1 miles. Secondary Schools: Brewood Secondary School 0.7 miles, Goodwin Academy 0.9 miles, Goodwin Academy 1.7 miles



Transport Information

Train Stations: Deal 0.8 miles, Walmer 2.7 miles, Martin Mill 5.6 miles



Address

Peter Street, Deal, Kent, CT14



Directions

For directions to this property please contact us.



Wards
Helping you move forwards

Call Deal Branch 01304 361420 ■ wardsofkent.co.uk



■ Legal advice should be taken to verify fixtures/fittings, planning, alterations and/or lease details ■ Appliances & services are untested, dimensions are approximate and floor plans are not to scale
■ Through a Homewise Home For Life Plan people aged 60+ can secure this property for up to 59% less, by purchasing a Lifetime Lease.



10629273/20231122/BH/LB1