



OVER 60?

Secure this property
for up to **59% less!**

Price

£290,000

Freehold

3x  1x  1x 

**London Road, Deal,
Kent, CT14**

Wards
Helping you move forwards



Main features

- **Spacious lounge/diner with bi-fold doors**
- **Private rear garden with no overlooking properties**
- **Walking distance to local primary schools**
- **Garage with electric sectional door, EV charge point and driveway for up to two vehicles**
- **Spacious entrance porch that could become a useful utility space.**

Accommodation

GROUND FLOOR

Entrance Porch
Hallway
Kitchen : 11'11 x 8'0 (3.63m x 2.44m)
Lounge/Diner: 19'1 x 16'2 (5.82m x 4.93m)

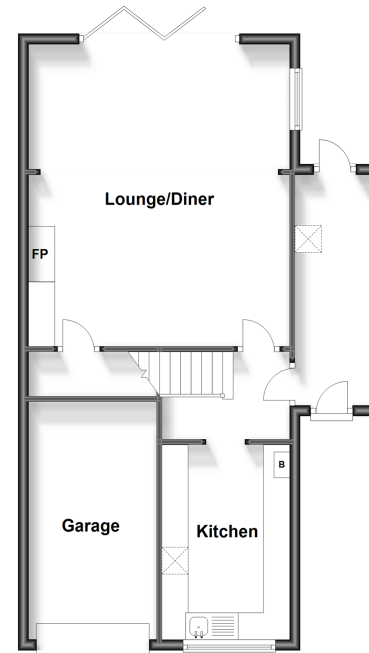
FIRST FLOOR

Landing
Bedroom 1: 14'1 x 10'2 (4.30m x 3.10m)
Shower Room
Separate Toilet
Bedroom 2: 11'2 x 7'11 (3.41m x 2.41m)
Bedroom 3: 11'2 x 7'1 (3.41m x 2.16m)

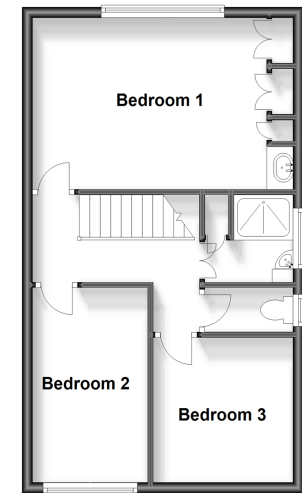
OUTSIDE

Driveway
Garage
Rear Garden

Ground Floor
Approx. 62.0 sq. metres (667.1 sq. feet)



First Floor
Approx. 43.0 sq. metres (463.3 sq. feet)



Call Deal - 01304 361420 ■ wardsofkent.co.uk

- Legal advice should be taken to verify fixtures/fittings, planning, alterations and/or lease details
- Through a Homewise Home For Life Plan people aged 60+ can secure this property for up to 59% less, by purchasing a Lifetime Lease.

- Appliances & services are untested, dimensions are approximate and floor plans are not to scale



10629345/20230725/TT/LB1