



OVER 60?

Secure this property
for up to **59% less!**

Price
£215,000

Freehold

1x  1x  1x 

**St. Richard's Road, Deal,
Kent, CT14**

Wards
Helping you move forwards



Main features

- Ideal first time buy or investment
- Well presented throughout and ready to move into
- Low maintenance rear courtyard
- Located a short walk from local amenities and only minutes from Walmer Train Station
- Potential to convert back to a two bedroom property if required

Accommodation

SPLIT LEVEL GROUND FLOOR

Entrance

Dining Area: 12'1 x 9'4 (3.69m x 2.85m)

Lounge : 11'11 x 10'10 (3.63m x 3.30m)

Kitchen : 11'11 x 7'4 (3.63m x 2.24m)

SPLIT LEVEL FIRST FLOOR

Landing

Bathroom

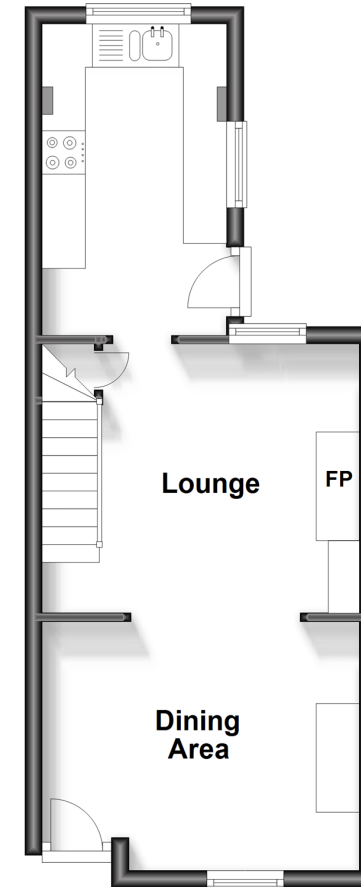
Bedroom 1: 20'10 x 12'0 (6.35m x 3.66m)

OUTSIDE

Rear Garden

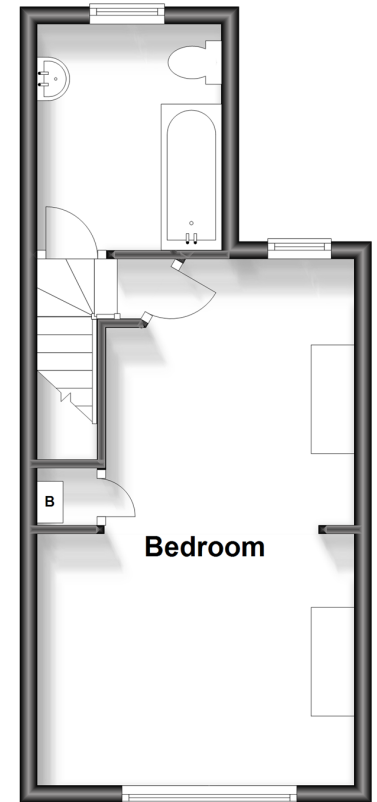
Split Level Ground Floor

Approx. 29.7 sq. metres (319.8 sq. feet)



Split Level First Floor

Approx. 28.0 sq. metres (301.4 sq. feet)



Call Deal - 01304 361420 ■ wardsofkent.co.uk

- Legal advice should be taken to verify fixtures/fittings, planning, alterations and/or lease details
- Appliances & services are untested, dimensions are approximate and floor plans are not to scale
- Through a Homewise Home For Life Plan people aged 60+ can secure this property for up to 59% less, by purchasing a Lifetime Lease.



10629530/20231204/LB1/LB1