



**OVER 60?**

Secure this property  
for up to **59% less!**

**Price**  
**£330,000**

**Freehold**

3x  1x  2x 

**London Road, Deal,  
Kent, CT14**

**Wards**  
Helping you move forwards





## Main features

- Generous garden with side access to the rear
- Local schools transport links and amenities nearby
- Potential to extend (Subject to permissions)
- Comes with ample living space and ready to be made your own
- Located within a short drive of Deal high street and seafront

## Accommodation

### SPLIT LEVEL GROUND FLOOR

Entrance Porch  
Entrance Hallway  
Lounge: 14'7 x 12'11 (4.45m x 3.94m)  
Dining Area: 14'7 x 12'3 (4.45m x 3.74m)  
Kitchen: 12'9 x 8'7 (3.89m x 2.62m)

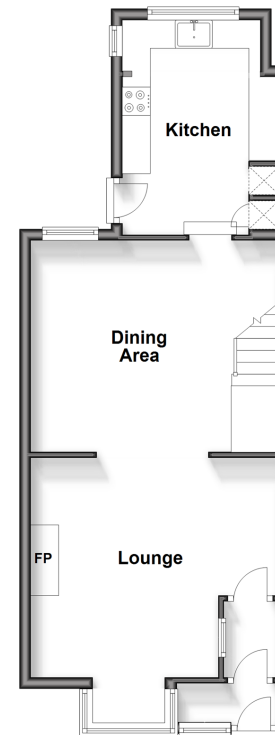
### SPLIT LEVEL FIRST FLOOR

Landing  
Bathroom  
Separate Toilet  
Bedroom 1: 12'5 x 10'0 (3.79m x 3.05m)  
Bedroom 2: 12'11 x 7'0 (3.94m x 2.14m)  
Bedroom 3: 9'8 x 7'0 (2.95m x 2.14m)

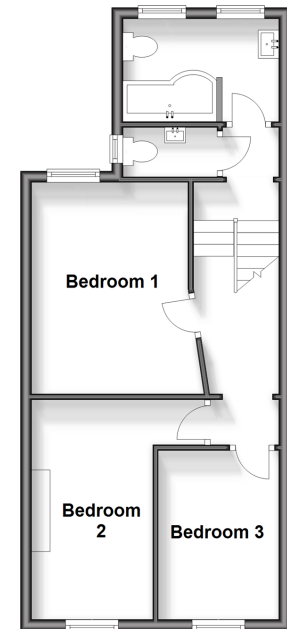
### OUTSIDE

Front and Rear Garden

**Split Level Ground Floor**  
Approx. 46.8 sq. metres (503.6 sq. feet)



**Split Level First Floor**  
Approx. 42.4 sq. metres (456.0 sq. feet)



**Call Deal - 01304 361420 ■ wardsofkent.co.uk**

■ Legal advice should be taken to verify fixtures/fittings, planning, alterations and/or lease details  
■ Through a Homewise Home For Life Plan people aged 60+ can secure this property for up to 59% less, by purchasing a Lifetime Lease.

■ Appliances & services are untested, dimensions are approximate and floor plans are not to scale



10629944/20240416/BG/WSM