



Price
£745,000

Freehold

4x  2x  3x 

**Union Road, Deal, Kent,
CT14**

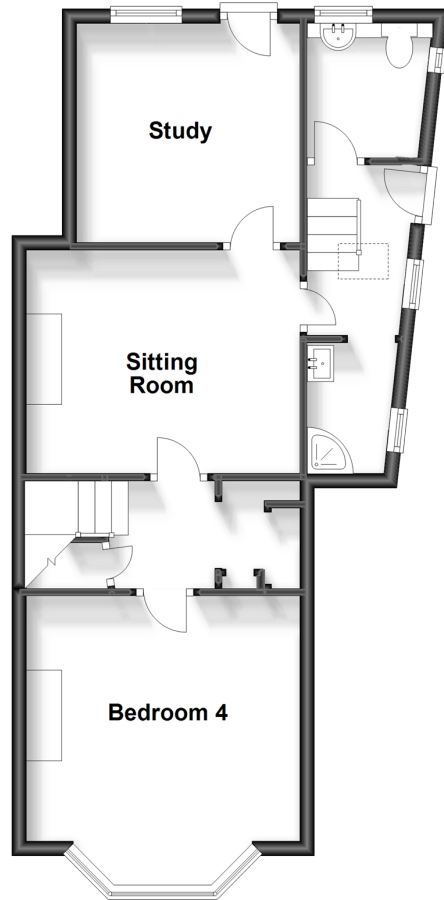
OVER 60?

Secure this property
for up to **59% less!**

Wards
Helping you move forwards

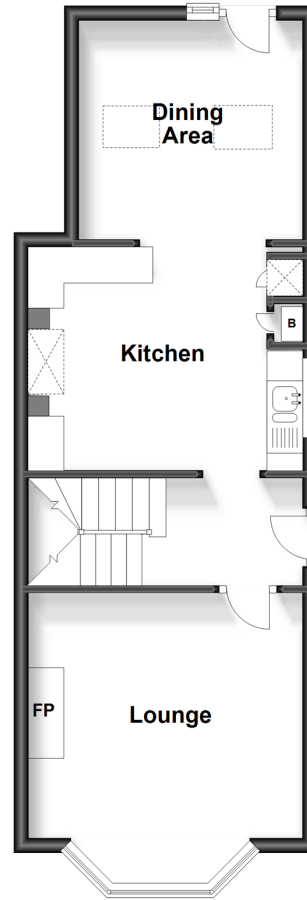
Split Level Lower Ground Floor

Approx. 50.9 sq. metres (547.4 sq. feet)



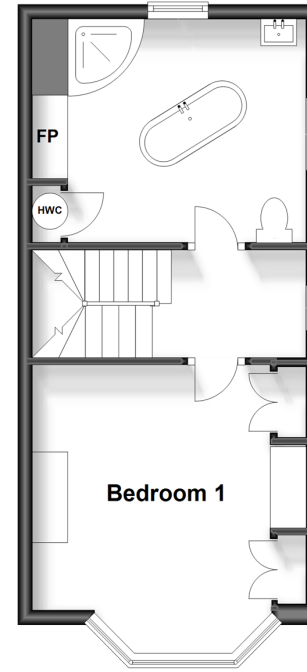
Ground Floor

Approx. 41.5 sq. metres (446.3 sq. feet)



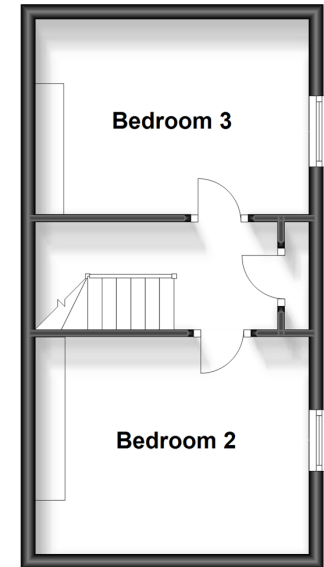
First Floor

Approx. 31.7 sq. metres (341.0 sq. feet)



Second Floor

Approx. 28.3 sq. metres (304.7 sq. feet)



Accommodation

SPLIT LEVEL LOWER GROUND FLOOR

Entrance Hallway
Cloakroom
Shower Room
Study: 10'2 x 9'9 (3.10m x 2.97m)
Sitting Room: 12'0 x 10'1 (3.66m x 3.08m)
Bedroom 4: 12'3 x 11'1 (3.74m x 3.38m)

GROUND FLOOR

Landing
Lounge : 12'9 x 11'10 (3.89m x 3.61m)
Kitchen : 12'9 x 10'8 (3.89m x 3.25m)
Dining Area : 10'3 x 9'9 (3.13m x 2.97m)

FIRST FLOOR

Landing
Bedroom 1: 13'2 x 12'0 (4.02m x 3.66m)
Bathroom: 11'10 x 10'9 (3.61m x 3.28m)

SECOND FLOOR

Landing
Bedroom 2: 13'1 x 9'10 (3.99m x 3.00m)
Bedroom 3: 13'1 x 8'9 (3.99m x 2.67m)

OUTSIDE

Front and Rear Gardens
Workshop



Main features

- Sought after location within walking distance of the beach, town centre and train station
- Immaculate condition throughout
- Versatile living space over four floors
- Generous private garden
- Being sold with no onward chain and all furnishings optional



Nearest Schools

Primary Schools: Sandown School 0.2 miles, Warden House Primary 0.8 miles, Deal Parochial C of E Primary 0.9 miles

Secondary Schools: Brewood Secondary School 0.5 miles,



Transport Information

Train Stations: Deal 0.2 miles, Walmer 1.7 miles, Sandwich 3.9 miles



Address

Union Road, Deal, Kent, CT14



Directions

For directions to this property please contact us.



Call Deal Branch 01304 361420 ■ wardsofkent.co.uk



- Legal advice should be taken to verify fixtures/fittings, planning, alterations and/or lease details
- Appliances & services are untested, dimensions are approximate and floor plans are not to scale
- Through a Homewise Home For Life Plan people aged 60+ can secure this property for up to 59% less, by purchasing a Lifetime Lease.



10630900/20240301/WSM/WSM