



OVER 60?

Secure this property
for up to **59% less!**

Price

£330,000

Freehold

3x  1x  1x 

**Circular Road,
Betteshanger, Deal,
Kent, CT14**

Wards
Helping you move forwards



Main features

- Being sold chain free
- Recently renovated semi-detached house in immaculate condition
- Extended to the side, creating additional kitchen/diner space
- Large driveway with off road parking for multiple cars
- Generous rear garden including a cabin with electricity and water supply

Accommodation

GROUND FLOOR

Porch

Dining room : 16'6 x 8'6 (5.03m x 2.59m)

Kitchen : 15'9 x 6'7 (4.80m x 2.01m)

Lounge: 16'7 x 11'10 (5.06m x 3.61m)

FIRST FLOOR

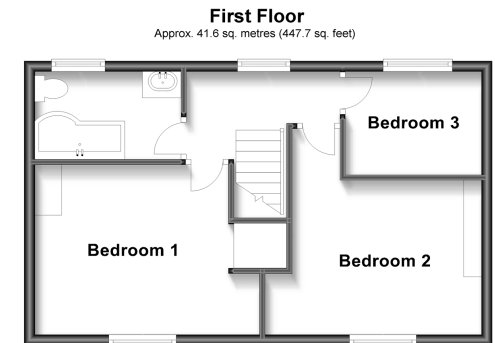
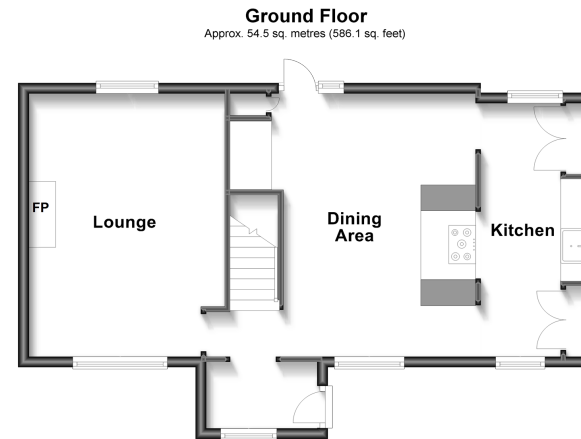
Bedroom 1: 13'2 x 9'7 (4.02m x 2.92m)

Bedroom 2 : 8'8 x 6'10 (2.64m x 2.08m)

Bedroom 3 : 14'4 x 10'10 (4.37m x 3.30m)

OUTSIDE

Cabin: 13'8 x 11'8 (4.17m x 3.56m)



Call Deal - 01304 361420 ■ wardsofkent.co.uk

- Legal advice should be taken to verify fixtures/fittings, planning, alterations and/or lease details
- Through a Homewise Home For Life Plan people aged 60+ can secure this property for up to 59% less, by purchasing a Lifetime Lease.

- Appliances & services are untested, dimensions are approximate and floor plans are not to scale