



Price
£450,000

Freehold

3x  1x  2x 

**The Rise, Kingsdown,
Deal, Kent, CT14**

Wards
Helping you move forwards



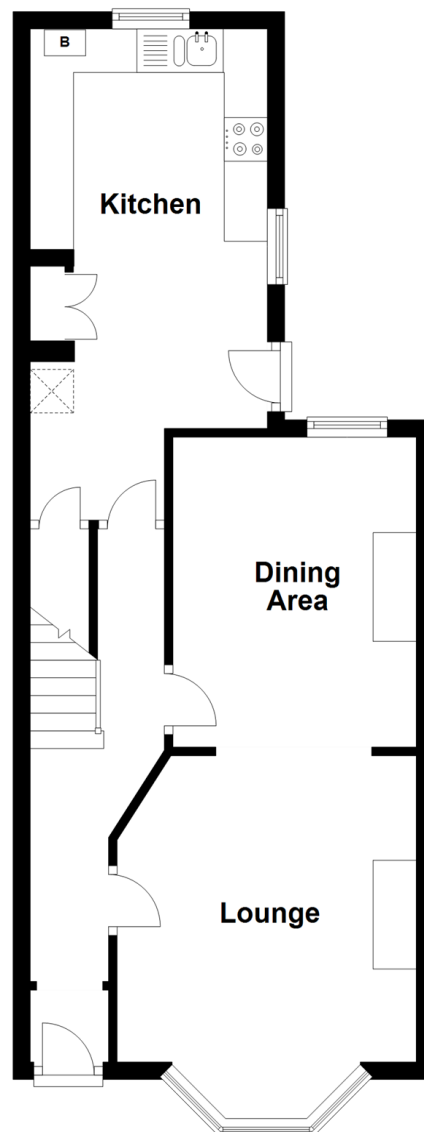
Main features

- Open plan lounge/dining area
- Kitchen with doors to garden and enough room for dining table
- Stunning fireplaces and original features throughout
- Located in beautiful Kingsdown within minutes walk to all it offers including the seafront
- Private rear garden with views over Kingsdown and a workshop/shed to the far end

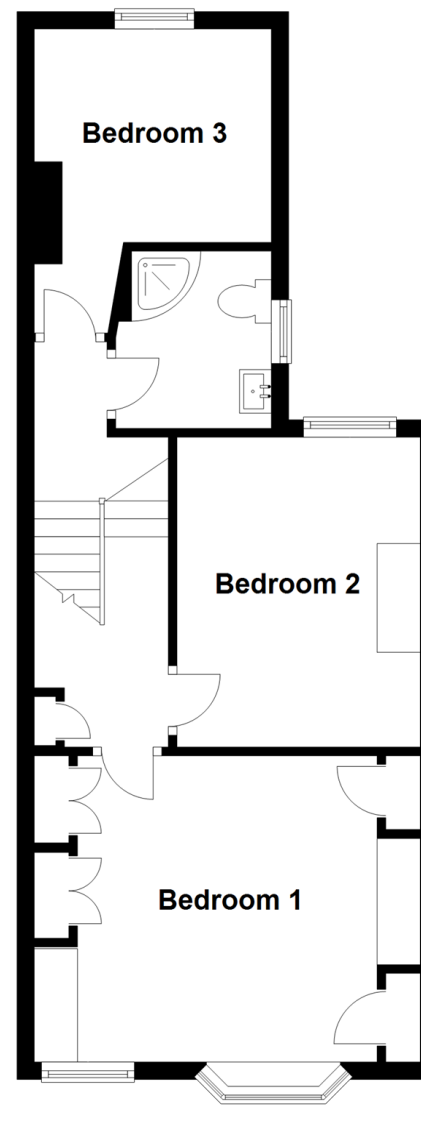
Call Deal - 01304 361420 ■ wardsofkent.co.uk

- If buying to let, the energy rating will need to be improved to at least 'E' rating before you can let the property
- Appliances & services are untested, dimensions are approximate and floor plans are not to scale

Ground Floor
Approx. 45.3 sq. metres (487.6 sq. feet)



Split Level First Floor
Approx. 45.1 sq. metres (485.9 sq. feet)



Accommodation

GROUND FLOOR

Entrance Hall

Lounge : 13'0 x 11'3 (3.97m x 3.43m)

Dining Area: 10'8 x 9'3 (3.25m x 2.82m)

Kitchen : 18'5 x 9'0 (5.62m x 2.75m)

FIRST FLOOR SPLIT LEVEL

Landing

Bedroom 1: 13'7 x 10'3 (4.14m x 3.13m)

Bedroom 2: 11'5 x 9'3 (3.48m x 2.82m)

Bedroom 3: 10'6 x 9'2 (3.20m x 2.80m)

Shower Room

OUTSIDE

Front Garden

Rear Garden

- Legal advice should be taken to verify fixtures/fittings, planning, alterations and/or lease details



10633577/20230613/BG/WSM