

OVER 60?

Secure this property
for up to **59% less!**



Price

£650,000

Freehold

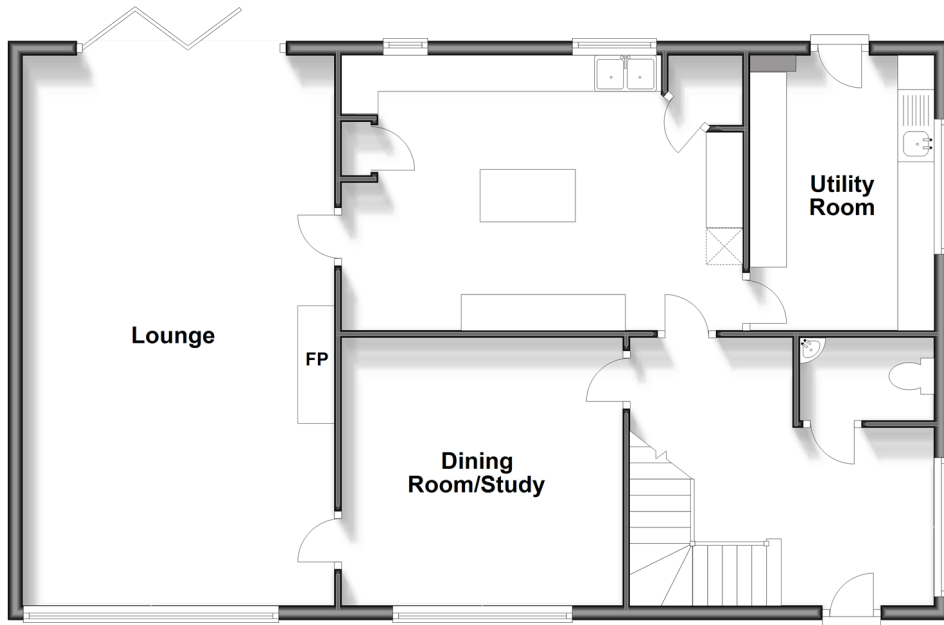
5x  2x  2x 

Manor Mews, Ringwoud, Deal, Kent, CT14

Wards
Helping you move forwards

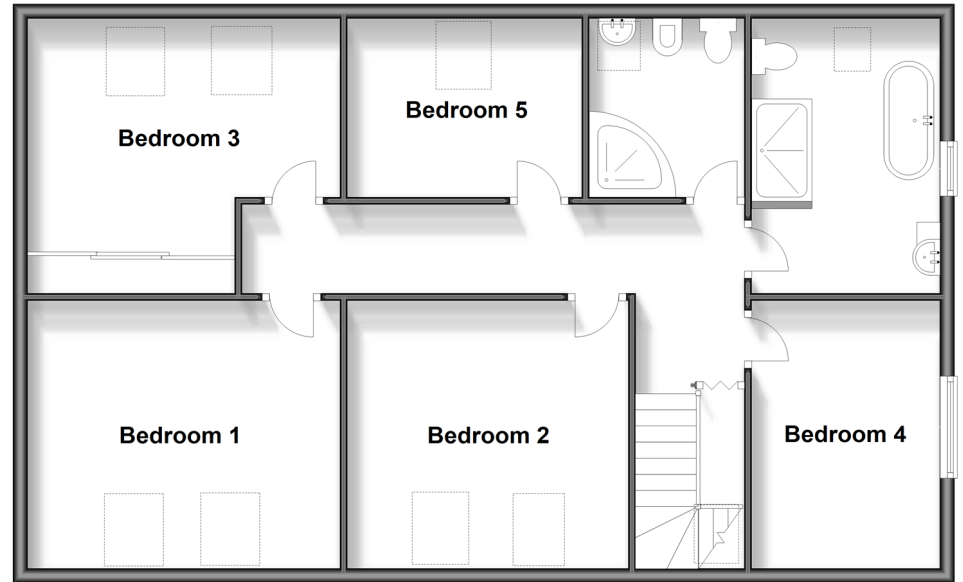
Ground Floor

Approx. 95.1 sq. metres (1024.0 sq. feet)



First Floor

Approx. 90.8 sq. metres (977.0 sq. feet)



Accommodation

GROUND FLOOR

Entrance Hallway
Cloakroom
Dining Room/ Study: 12'8 x 12'3 (3.86m x 3.74m)
Kitchen : 17'10 x 12'10 (5.44m x 3.91m)
Utility Room: 12'7 x 8'3 (3.84m x 2.52m)
Lounge : 24'11 x 14'5 (7.60m x 4.40m)

FIRST FLOOR

Landing
Bedroom 4: 12'2 x 8'5 (3.71m x 2.57m)
Bathroom
Shower Room
Bedroom 5: 10'5 x 8'5 (3.18m x 2.57m)
Bedroom 3: 16'2 x 12'8 (4.93m x 3.86m)
Bedroom 1: 14'0 x 10'5 (4.27m x 3.18m)
Bedroom 2: 14'0 x 12'2 (4.27m x 3.71m)

OUTSIDE

Front and Rear Gardens
Driveway
Double Garage



Main features

- Large family house in a private quiet cul-de-sac
- Rear garden with new patio and fencing
- Driveway and double garage with electric door
- All new windows, bi-fold doors, new boiler and oil tank
- Full planning permission granted for reconfiguration of first floor including 4 dormer roof, extension and Juliet balcony



Nearest Schools

Primary Schools: Kingsdown and Ringwould CofE Primary 0.9 miles, The Downs C of E Primary 1.6 miles, St Mary's Catholic Primary 1.7 miles.
Secondary Schools: Ripplevale School 0.9 miles, Goodwin Academy 1.4 miles



Transport Information

Train Stations: Walmer 1.2 miles, Martin Mill 1.5 miles, Deal 2.7 miles



Address

Manor Mews, Ringwould, Deal, Kent, CT14



Directions

For directions to this property please contact us.



Call Deal Branch 01304 361420 ■ wardsofkent.co.uk



■ Legal advice should be taken to verify fixtures/fittings, planning, alterations and/or lease details ■ Appliances & services are untested, dimensions are approximate and floor plans are not to scale
 ■ Through a Homewise Home For Life Plan people aged 60+ can secure this property for up to 59% less, by purchasing a Lifetime Lease.



10634005/20240109/LB1/LB1