



Price
£200,000

2x  2x  1x 

**Greenacres Park, Golf
Road, Deal, Kent, CT14**

Wards
Helping you move forwards



Main features

- Detached park home available for over 50's
- Spectacular countryside views
- Driveway parking
- En-suite to main bedroom and walk in wardrobe, providing plenty of storage space
- Situated only a short drive from Deal town centre

Accommodation

GROUND FLOOR

Entrance Hall

Lounge/Diner : 19'5 x 19'3 (5.92m x 5.87m)

Kitchen : 14'5 x 9'2 (4.40m x 2.80m)

Bedroom 1: 11'10 x 9'4 (3.61m x 2.85m)

En Suite Shower Room

Dressing Room

Bedroom 2: 10'7 x 9'5 up to fitted wardrobes (3.23m x 2.87m)

Cloakroom

OUTSIDE

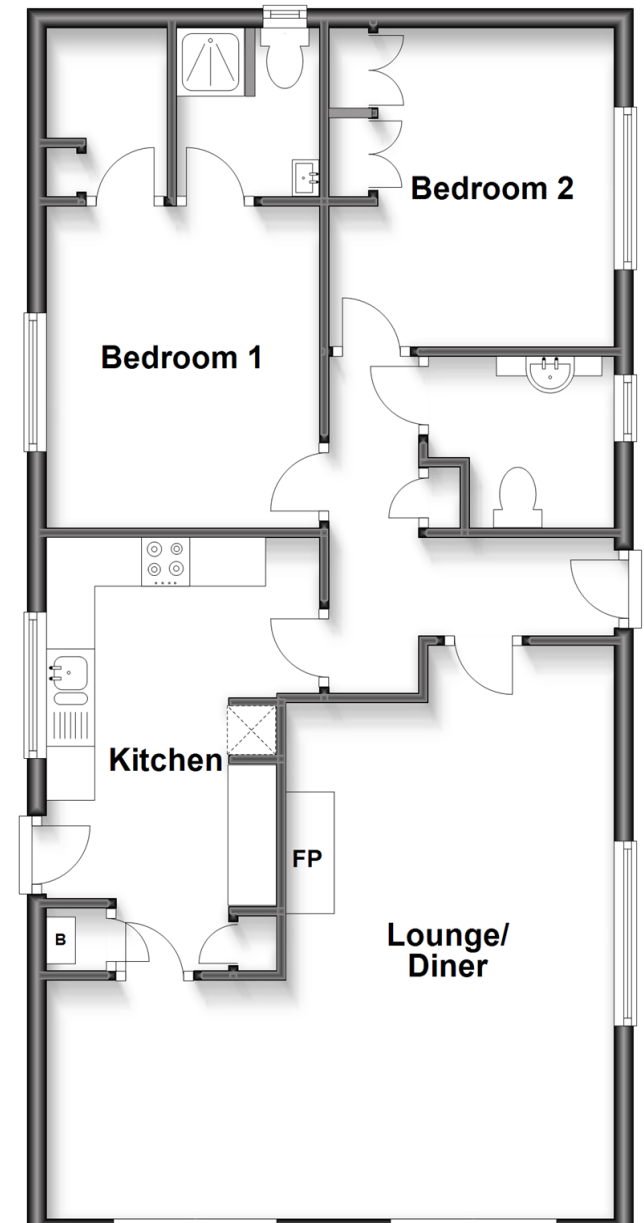
Front Garden

Rear Garden

Off Road Parking

Ground Floor

Approx. 71.8 sq. metres (772.8 sq. feet)



Call Deal - 01304 361420 ■ wardsofkent.co.uk

- If buying to let, the energy rating will need to be improved to at least 'E' rating before you can let the property
- Legal advice should be taken to verify fixtures/fittings, planning, alterations and/or lease details
- Appliances & services are untested, dimensions are approximate and floor plans are not to scale



10634054/20230109/JH/LB1