



OVER 60?

Secure this property
for up to **59% less!**

Price

£180,000

Leasehold

2x  1x  1x 

**Birdwood Avenue, Deal,
Kent, CT14**

Wards
Helping you move forwards

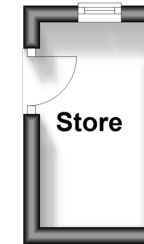


Main features

- Spacious ground floor flat in popular location
- Large private rear garden
- Both double bedrooms
- Great first time buy or investment
- Within a short walk of convenience shops, takeaway and bus stop

Outbuilding

Approx. 3.2 sq. metres (34.6 sq. feet)



Accommodation

GROUND FLOOR

Entrance Hallway

Lounge : 13'0 x 12'11 (3.97m x 3.94m)

Bedroom 1: 10'10 x 10'4 (3.30m x 3.15m)

Shower Room

Kitchen : 12'9 x 10'2 (3.89m x 3.10m)

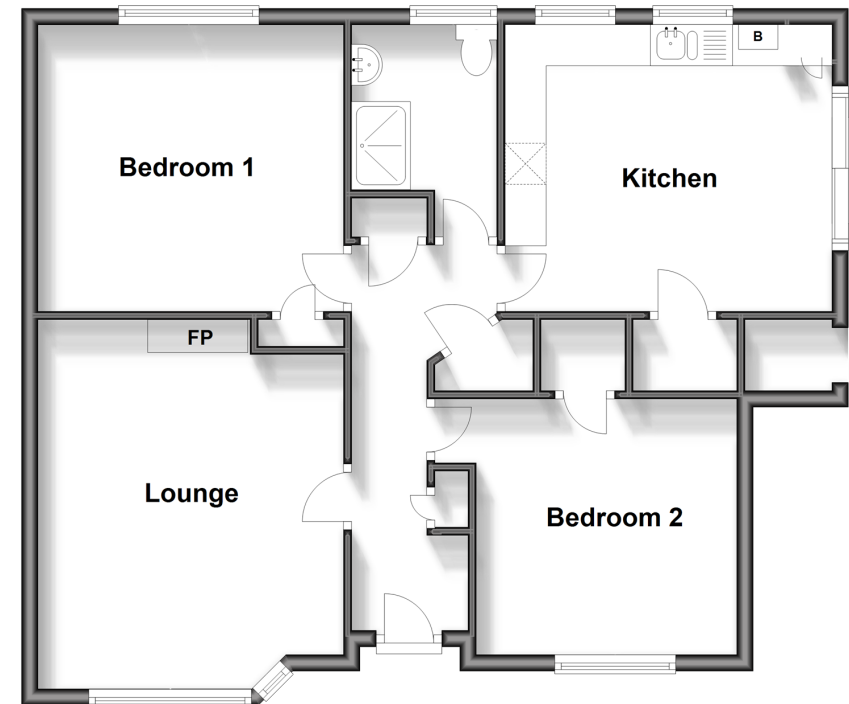
Bedroom 2: 12'3 x 11'3 (3.74m x 3.43m)

OUTSIDE

Front and Rear Gardens
Store

Ground Floor

Approx. 71.2 sq. metres (766.9 sq. feet)



Call Deal - 01304 361420 ■ wardsofkent.co.uk

- Legal advice should be taken to verify fixtures/fittings, planning, alterations and/or lease details
- Appliances & services are untested, dimensions are approximate and floor plans are not to scale
- Through a Homewise Home For Life Plan people aged 60+ can secure this property for up to 59% less, by purchasing a Lifetime Lease.



10634195/20240325/BG/LB1