



Price
£795,000

Freehold

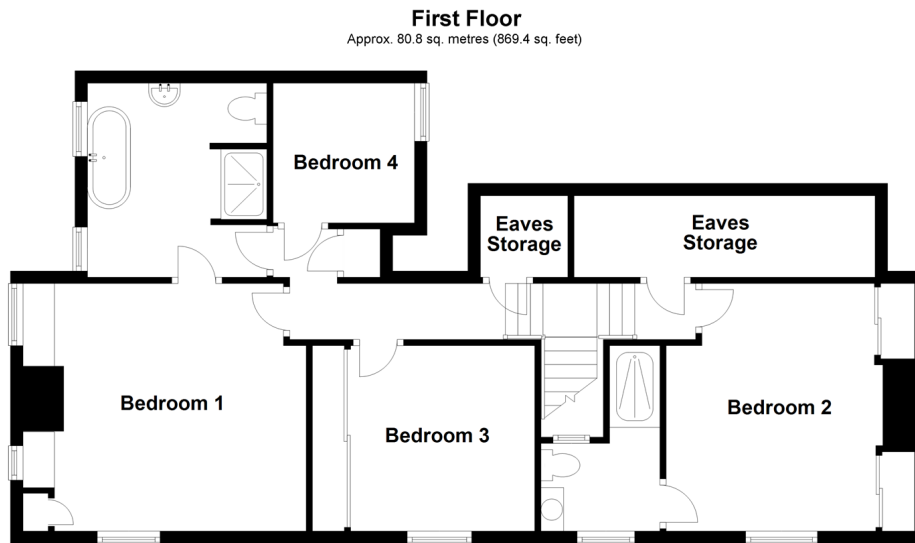
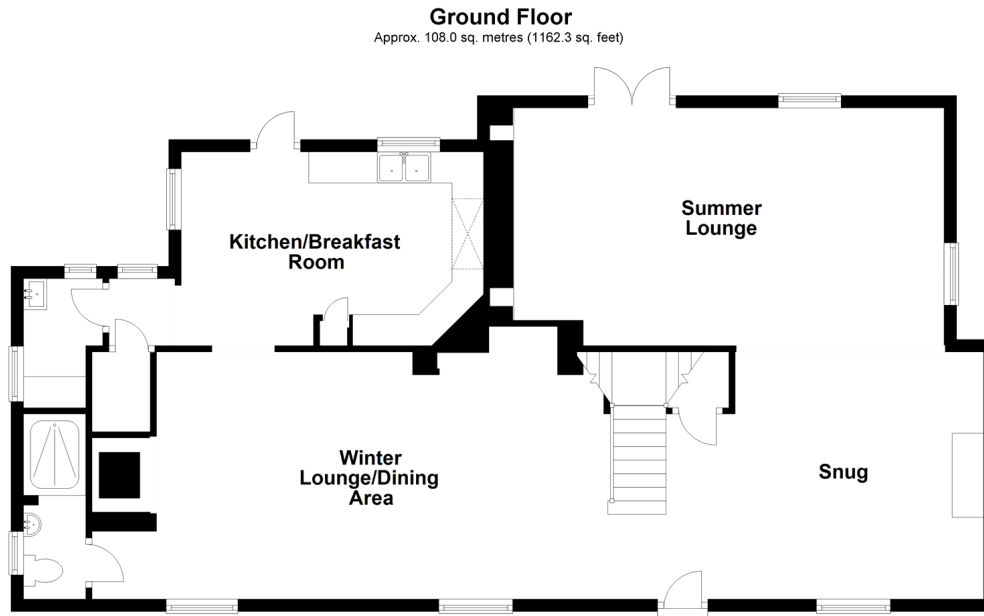
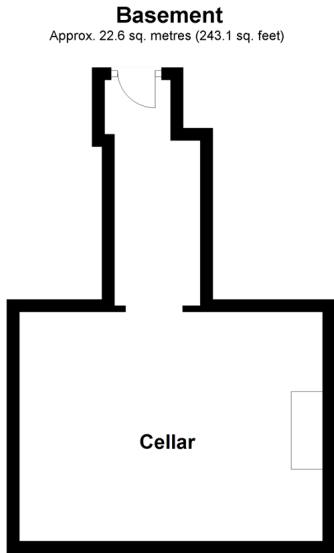
4x  3x  3x 

**Upper Street,
Tilmanstone, Deal, Kent,
CT14**

OVER 60?

Secure this property
for up to **59% less!**

Wards
Helping you move forwards



Accommodation

GROUND FLOOR

Laundry Room

Kitchen/Breakfast Room: 15'11 x 10'0 (4.85m x 3.05m)

Winter Lounge/Dining Area: 27'10 x 12'10 (8.49m x 3.91m)

Shower Room

Snug: 19'9 x 13'1 (6.02m x 3.99m)

Summer Lounge : 22'6 x 12'0 (6.86m x 3.66m)

Pantry

BASEMENT

Cellar: 17'3 x 13'0 (5.26m x 3.97m)

FIRST FLOOR

Landing

Bedroom 1: 15'0 x 12'8 (4.58m x 3.86m)

Bathroom

Bedroom 2: 13'3 x 13'2 (4.04m x 4.02m)

En-Suite Shower Room

Bedroom 3: 9'7 x 9'5 (2.92m x 2.87m)

Bedroom 4: 7'4 x 6'11 (2.24m x 2.11m)

Eaves Storage

OUTSIDE

Front Garden

Rear Garden

Driveway

Out Building Room 1: 15'6 x 7'0 (4.73m x 2.14m)

Out Building Room 2: 9'6 x 8'10 (2.90m x 2.69m)

Out Building Toilet



Main features

- Stunning family home dating back to 1600's
- Gated driveway parking for up to 9 vehicles
- Quiet village location only a short drive from the coast
- Large established specimen garden with large patio area and rustic potting shed
- Self contained out building perfect for a home office or business complete with electric, toilet & internet connection



Nearest Schools

Primary Schools: Northbourne C of E Primary 1.3 miles, Eythorne Elvington Community Primary 1.5 miles, Eastry C of E Primary 2.3 miles
Secondary Schools: Sandwich Technology School 3.8 miles, Goodwin Academy 4.2 miles



Transport Information

Train Stations: Walmer 3.9 miles, Martin Mill 3.9 miles, Sandwich 4.4 miles



Address

Upper Street, Tilmanstone, Deal, Kent, CT14



Directions

For directions to this property please contact us.



Call Deal Branch 01304 361420 ■ wardsofkent.co.uk



■ If buying to let, the energy rating will need to be improved to at least 'E' rating before you can let the property
■ Appliances & services are untested, dimensions are approximate and floor plans are not to scale

■ Legal advice should be taken to verify fixtures/fittings, planning, alterations and/or lease details
■ Through a Homewise Home For Life Plan people aged 60+ can secure this property for up to 59% less, by purchasing a Lifetime Lease.

10634196/20231108/LB1/LB1