



**OVER 60?**

Secure this property  
for up to **59% less!**

**Price**  
**£400,000**

**Freehold**

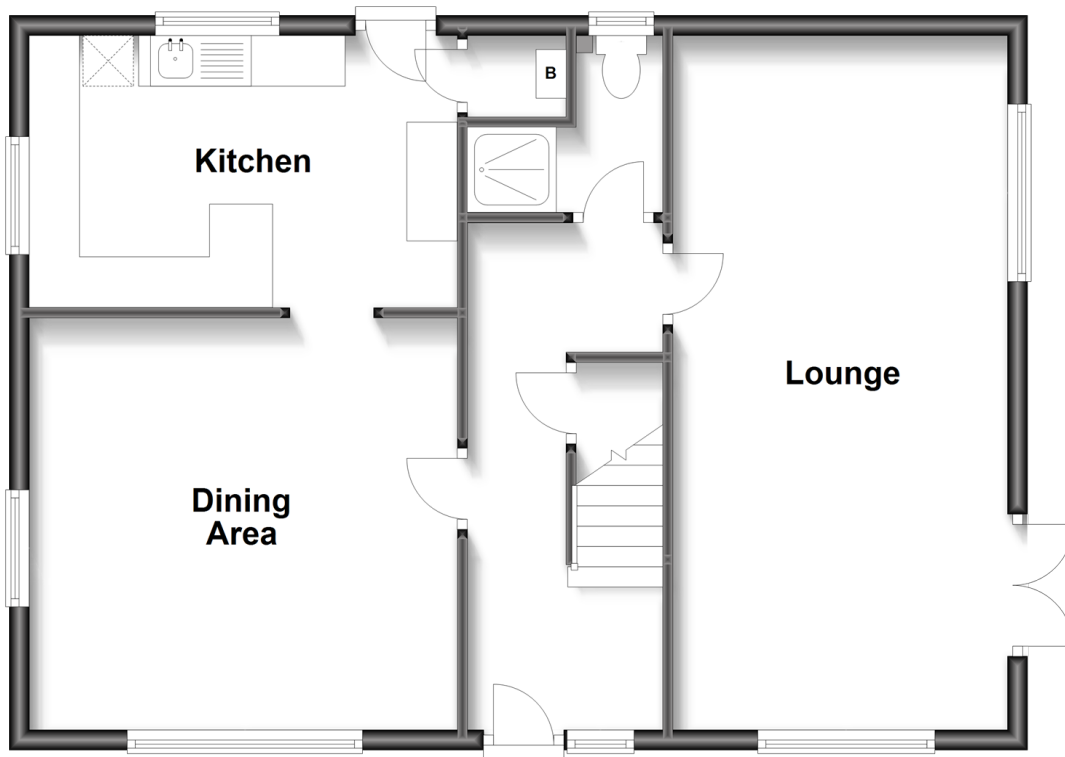
3x  2x  2x 

**The Corner House,  
Dover Road, Walmer,  
Deal, Kent, CT14**

*Wards*  
Helping you move forwards

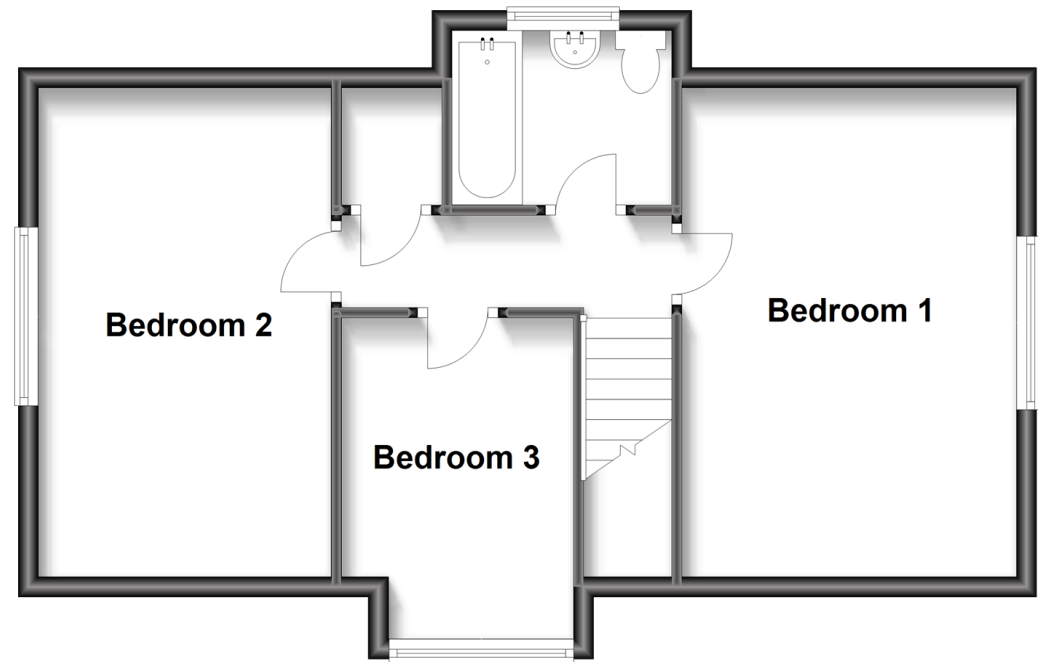
## Ground Floor

Approx. 66.5 sq. metres (716.2 sq. feet)



## First Floor

Approx. 49.2 sq. metres (529.9 sq. feet)



## Accommodation

### GROUND FLOOR

Dining Room : 14'9 x 13'3 (4.50m x 4.04m)

Kitchen: 14'9 x 8'11 (4.50m x 2.72m)

Shower Room: 6'5 x 5'11 (1.96m x 1.80m)

Lounge : 22'2 x 10'11 (6.76m x 3.33m)

### OUTSIDE

Garage: 17'10 x 9'0 (5.44m x 2.75m)

Off Street Parking

### FIRST FLOOR

Bedroom One: 16'2 x 10'11 (4.93m x 3.33m)

Bedroom Two: 16'2 x 10'8 (4.93m x 3.25m)

Bedroom Three: 10'5 x 7'8 (3.18m x 2.34m)

Bathroom



## Main features

- Peaceful & quiet due to new double glazed windows and doors
- Spacious and light throughout with flexible accommodation
- Downstairs toilet & shower
- Generous plot & wrap around garden
- Off road parking and garage



### Nearest Schools

Primary Schools: The Downs C of E Primary 1.1 miles, St Mary's Catholic Primary 1.2 miles, Deal Parochial C of E Primary 1.2 miles

Secondary Schools: Goodwin Academy 0.8 miles,



### Transport Information

Train Stations: Walmer 0.5 miles, Deal 2.2 miles, Martin Mill 3.1 miles



### Address

The Corner House, Dover Road, Walmer, Deal, Kent, CT14



### Directions

For directions to this property please contact us.



Call Deal Branch 01304 361420 ■ [wardsofkent.co.uk](http://wardsofkent.co.uk)



- Legal advice should be taken to verify fixtures/fittings, planning, alterations and/or lease details
- Appliances & services are untested, dimensions are approximate and floor plans are not to scale
- Through a Homewise Home For Life Plan people aged 60+ can secure this property for up to 59% less, by purchasing a Lifetime Lease.



10634282/20240315/EP/LB1