



Price
£450,000

Freehold

2x  1x  2x 

**Granville Street, Deal,
Kent, CT14**

OVER 60?

Secure this property
for up to **59% less!**

Wards
Helping you move forwards



Main features

- In immaculate condition ready to move into
- Additional basement room
- Period property with original features
- Bi-fold doors to the rear leading into stunning landscaped garden
- Situated in a popular location in walking distance to the seafront

Accommodation

SPLIT LEVEL GROUND FLOOR

Lounge/Diner: 22'0 x 13'0 (6.71m x 3.97m)

Kitchen : 9'11 x 7'8 (3.02m x 2.34m)

BASEMENT

Basement Room : 12'7 x 10'9 (3.84m x 3.28m)

SPLIT LEVEL FIRST FLOOR

Landing

Bedroom 1: 14'11 x 9'11 (4.55m x 3.02m)

Bedroom 2: 11'6 x 10'0 (3.51m x 3.05m)

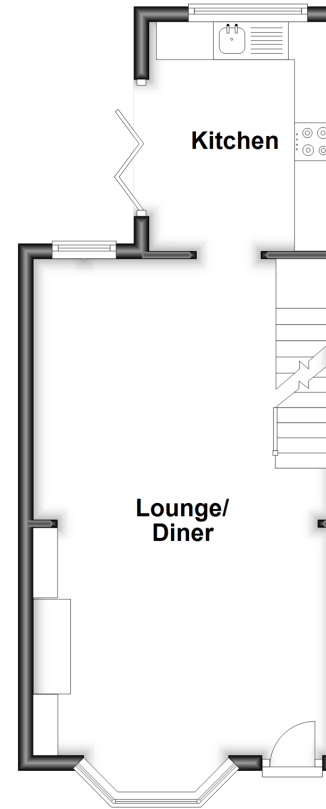
Bathroom

OUTSIDE

Rear Garden

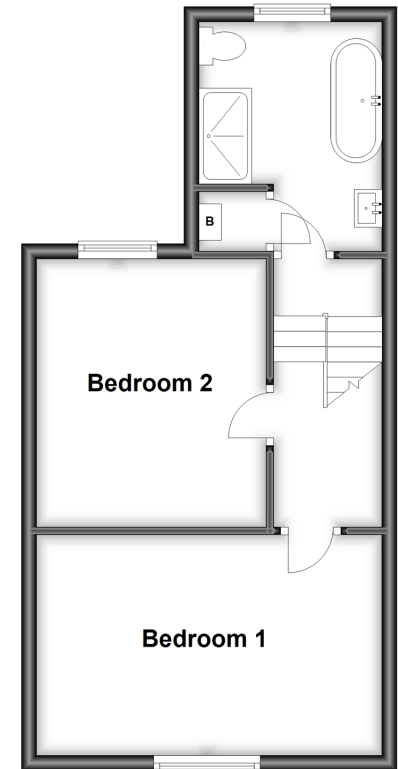
Split Level Ground Floor

Approx. 33.9 sq. metres (365.0 sq. feet)



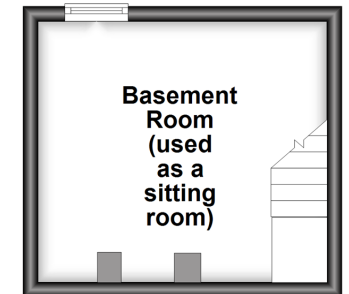
Split Level First Floor

Approx. 37.7 sq. metres (406.2 sq. feet)



Basement

Approx. 13.3 sq. metres (142.8 sq. feet)



Call Deal - 01304 361420 ■ wardsofkent.co.uk

- Legal advice should be taken to verify fixtures/fittings, planning, alterations and/or lease details
- Appliances & services are untested, dimensions are approximate and floor plans are not to scale
- Through a Homewise Home For Life Plan people aged 60+ can secure this property for up to 59% less, by purchasing a Lifetime Lease.



10634294/20240312/EP/WSM