



Price
£275,000

Freehold

3x  1x  1x 

**Forelands Square, Deal,
Kent, CT14**

OVER 60?

Secure this property
for up to **59% less!**

Wards
Helping you move forwards



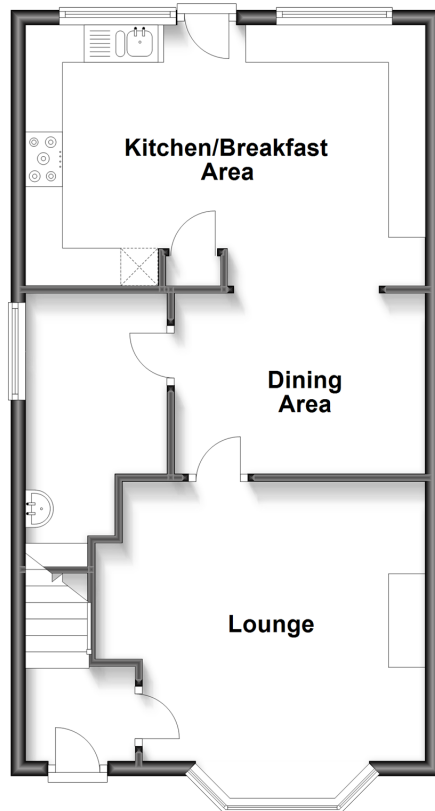
Main features

- Great first time buy or family home
- Flexible accommodation for a dining room or office
- Rear garden with access to the field behind
- Single story extension creating a large kitchen/breakfast area
- Located in a quiet popular area only a short walk from shops, schools and a newly built children park.

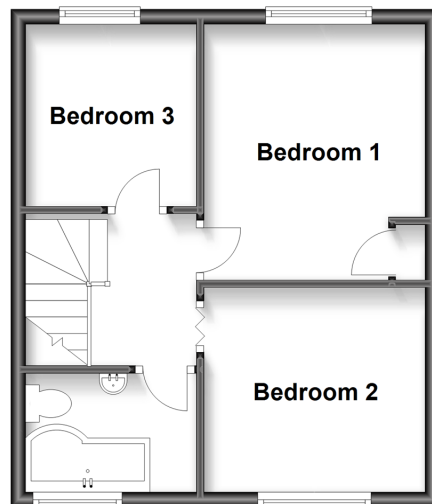
Call Deal - 01304 361420 ■ wardsofkent.co.uk

- Legal advice should be taken to verify fixtures/fittings, planning, alterations and/or lease details
- Through a Homewise Home For Life Plan people aged 60+ can secure this property for up to 59% less, by purchasing a Lifetime Lease.

Ground Floor
Approx. 53.5 sq. metres (576.3 sq. feet)



First Floor
Approx. 33.8 sq. metres (363.9 sq. feet)



Accommodation

GROUND FLOOR

Entrance Hall

Lounge : 13'5 x 13'4 (4.09m x 4.07m)

Dining Area: 11'2 x 7'10 (3.41m x 2.39m)

Utility Room/Cloakroom : 10'9 x 6'0 (3.28m x 1.83m)

Kitchen/Breakfast Area: 16'11 x 11'4 (5.16m x 3.46m)

FIRST FLOOR

Landing

Bedroom 3: 7'11 x 7'9 (2.41m x 2.36m)

Bedroom 1: 10'5 x 9'2 (3.18m x 2.80m)

Bedroom 2: 11'2 x 8'3 (3.41m x 2.52m)

Bathroom

OUTSIDE

Off Road Parking

Rear Garden

- Appliances & services are untested, dimensions are approximate and floor plans are not to scale