

**OVER 60?**

Secure this property  
for up to **59% less!**



Virtual Reality Tour available

**Price**

**£760,000**

**Freehold**

4x  3x  2x 

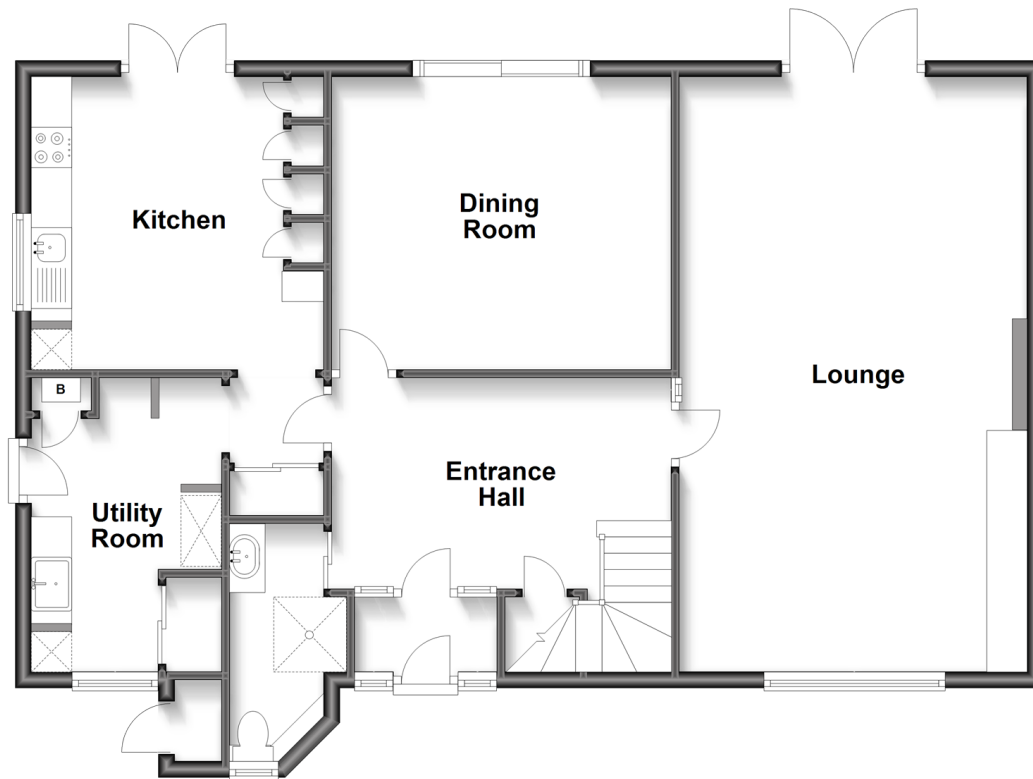
Gothic Close, Upper Walmer, Deal, Kent,  
CT14

*Wards*  
Helping you move forwards



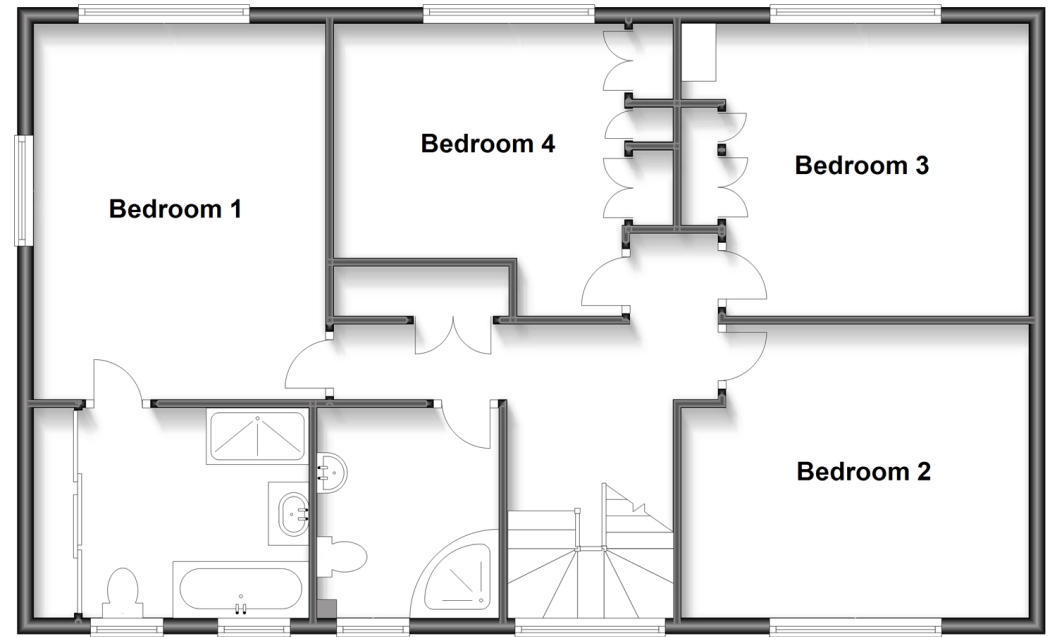
## Ground Floor

Approx. 92.5 sq. metres (995.8 sq. feet)



## First Floor

Approx. 90.6 sq. metres (975.5 sq. feet)



## Accommodation

### GROUND FLOOR

Entrance Porch  
Entrance Hall  
Lounge : 24'1 x 13'8 (7.35m x 4.17m)  
Dining Room : 13'8 x 11'8 (4.17m x 3.56m)  
Kitchen : 11'8 x 11'8 (3.56m x 3.56m)  
Utility Room : 12'0 x 7'8 (3.66m x 2.34m)  
Wet Room

### FIRST FLOOR

Landing  
Bedroom 1: 15'3 x 11'8 (4.65m x 3.56m)  
En Suite Bathroom  
Bedroom 2: 14'11 into fitted wardrobes x 9'5 (4.55m x 2.87m)  
Bedroom 3: 14'2 x 12'3 (4.32m x 3.74m)  
Bedroom 4: 13'7 into fitted wardrobes x 9'5 (4.14m x 2.87m)  
Shower Room

### OUTSIDE

Front Garden  
Rear Garden  
Off Road Parking  
Garage x 2



## Main features

- Quiet cul de sac located in Upper Walmer, close to Walmer castle & seafront
- Private low maintenance garden with summerhouse
- Modern kitchen and large utility room
- Three shower rooms including a large en suite/dressing room with bath
- Two large garages and private driveway with parking for several cars



### Nearest Schools

Primary Schools: The Downs C of E Primary 0.2 miles, Deal Parochial C of E Primary 0.7 miles, St Mary's Catholic Primary 0.8 miles  
Secondary Schools: Goodwin Academy 0.0 miles, Sandwich Technology School 4.8 miles



### Transport Information

Train Stations: Walmer 0.3 miles, Deal 1.3 miles, Martin Mill 2.8 miles  
Bus Stop 0.1 miles



### Address

Gothic Close, Upper Walmer, Deal, Kent, CT14



### Directions

For directions to this property please contact us.





*Wards*  
Helping you move forwards

Call Deal Branch 01304 361420 ■ [wardsofkent.co.uk](http://wardsofkent.co.uk)



■ Legal advice should be taken to verify fixtures/fittings, planning, alterations and/or lease details ■ Appliances & services are untested, dimensions are approximate and floor plans are not to scale  
■ Through a Homewise Home For Life Plan people aged 60+ can secure this property for up to 59% less, by purchasing a Lifetime Lease.



10634365/20221116/CB/LW