



**Price**  
**£325,000**

**Freehold**

4x  1x  1x 

**Dover Road, Walmer,  
Deal, Kent, CT14**

**OVER 60?**

Secure this property  
for up to **59% less!**

*Wards*  
Helping you move forwards





## Accommodation

### GROUND FLOOR

Lounge  
Kitchen 1  
Bedroom 1  
Bathroom  
Kitchen/Living Area : 22'11 x 11'0 (6.99m x 3.36m)  
Bedroom 4: 10'8 x 9'11 (3.25m x 3.02m)  
Bedroom 5: 9'11 x 9'7 (3.02m x 2.92m)  
Bathroom

### FIRST FLOOR

Landing  
Lounge 2  
Kitchen 2  
Bedroom 2  
Bathroom  
Lounge 3

Kitchen 3  
Bedroom 3  
Bathroom

### OUTSIDE

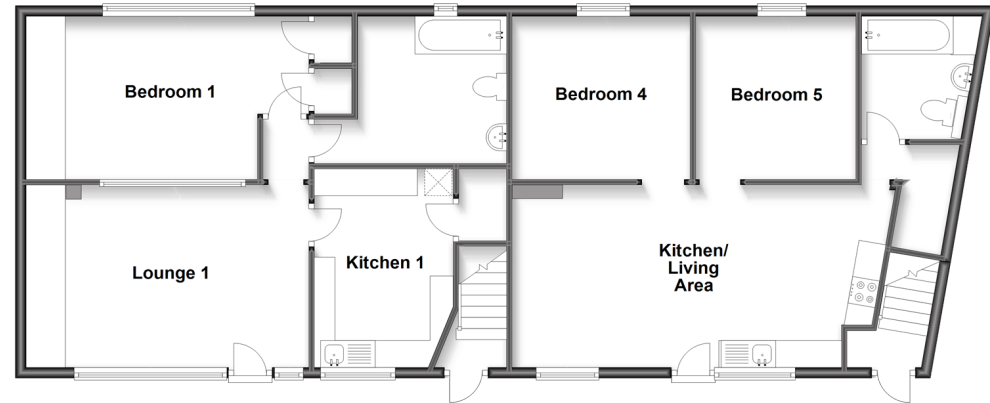
Off Road Parking  
Rear Garden

## Main features

- Fantastic investment opportunity with tenants in situ
- Currently comprised of four flats
- Comes with off road parking
- Potential for renovation or conversion into a family home (subject to planning permissions)
- Situated in a sought after location with amenities and transport links nearby
- Cash buyers only

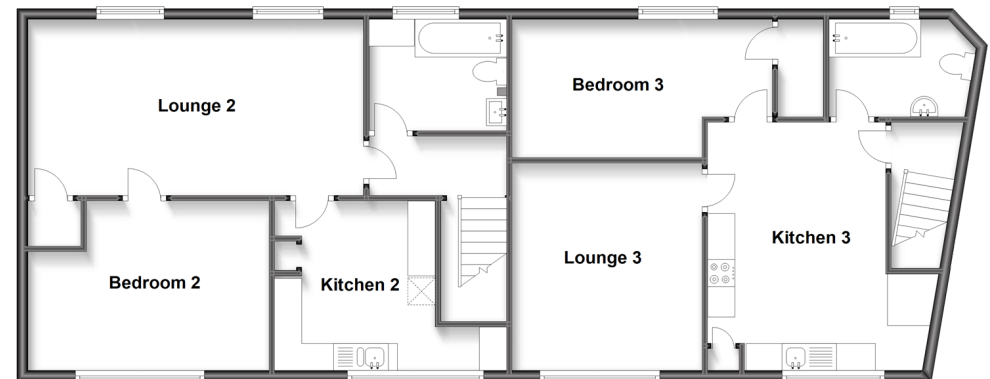
### Ground Floor

Approx. 110.3 sq. metres (1187.7 sq. feet)



### First Floor

Approx. 110.0 sq. metres (1183.7 sq. feet)



**Call Deal - 01304 361420 ■ wardsofkent.co.uk**

■ Legal advice should be taken to verify fixtures/fittings, planning, alterations and/or lease details  
■ Through a Homewise Home For Life Plan people aged 60+ can secure this property for up to 59% less, by purchasing a Lifetime Lease.

■ Appliances & services are untested, dimensions are approximate and floor plans are not to scale