



Price
£410,000

Freehold

3x  1x  2x 

**Lower Street, Eastry,
Sandwich, Kent, CT13**

OVER 60?

Secure this property
for up to **59% less!**

Wards
Helping you move forwards



Main features

- Period cottage with many features
- All double bedrooms
- Log burner and whole house re-wired
- Large established wildlife garden with apple, cherry and plum trees
- Village location, close to shops, primary school, vets and on a bus route.

Accommodation

GROUND FLOOR

Entrance Hallway
 Dining Room : 12'9 x 9'3 (3.89m x 2.82m)
 Lounge: 13'6 x 11'5 (4.12m x 3.48m)
 Studio/Office : 20'8 x 6'2 (6.30m x 1.88m)
 Kitchen: 13'3 x 9'11 (4.04m x 3.02m)
 Bathroom

FIRST FLOOR

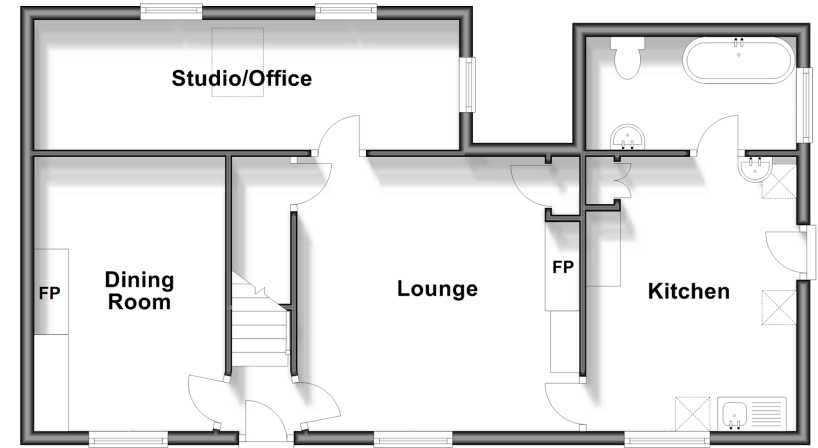
Landing
 Bedroom 3: 14'1 x 10'10 (4.30m x 3.30m)
 Bedroom 1: 14'10 x 13'7 (4.52m x 4.14m)
 Bedroom 2: 14'1 x 9'7 (4.30m x 2.92m)

OUTSIDE

Front and Rear Garden

Ground Floor

Approx. 62.2 sq. metres (669.9 sq. feet)



First Floor

Approx. 44.5 sq. metres (479.1 sq. feet)



Call Deal - 01304 361420 ■ wardsofKent.co.uk

- If buying to let, the energy rating will need to be improved to at least 'E' rating before you can let the property
- Legal advice should be taken to verify fixtures/fittings, planning, alterations and/or lease details
- Appliances & services are untested, dimensions are approximate and floor plans are not to scale
- Through a Homewise Home For Life Plan people aged 60+ can secure this property for up to 59% less, by purchasing a Lifetime Lease.



10634445/20240430/BG/LB1