



OVER 60?

Secure this property
for up to **59% less!**

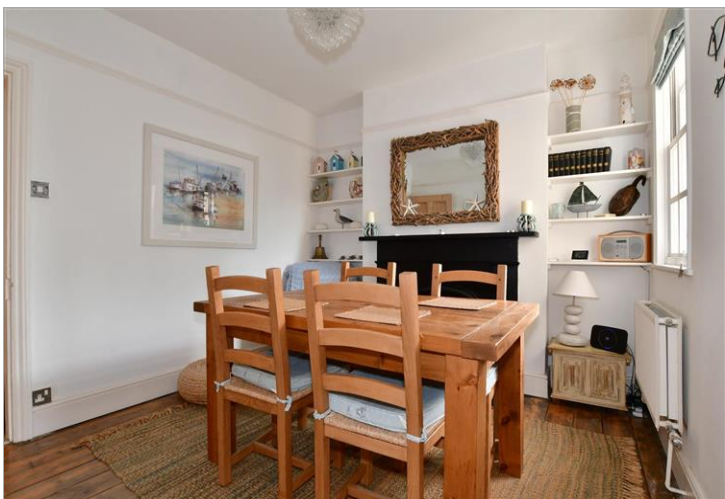
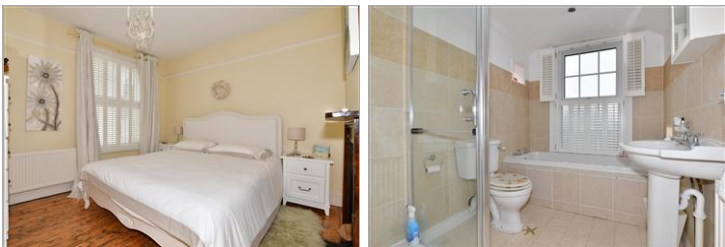
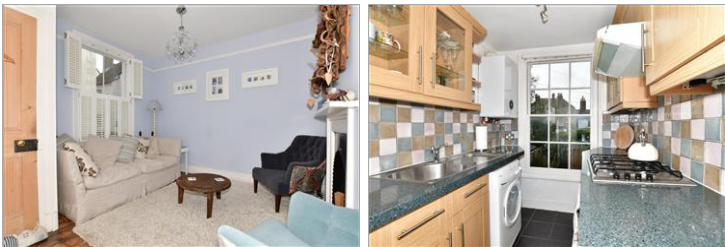
Price
£550,000

Freehold

3x  2x  1x 

**Middle Street, Deal,
Kent, CT14**

Wards
Helping you move forwards



Main features

- Private garden with rear access
- Located within a stones throw of the beach and high street
- In immaculate condition, ready to move straight into
- Stunning character property within the popular conservation area
- Converted lower ground floor bedroom with en-suite shower room

Accommodation

GROUND FLOOR

Entrance Porch

Lounge : 11'10 x 11'4 (3.61m x 3.46m)

Dining Area: 11'5 x 9'11 (3.48m x 3.02m)

Kitchen : 8'8 x 6'2 (2.64m x 1.88m)

LOWER GROUND FLOOR

Bedroom 1 : 11'2 x 9'6 (3.41m x 2.90m)

En-Suite Shower Room

FIRST FLOOR

Landing

Bedroom 2 : 11'11 x 11'3 (3.63m x 3.43m)

Bedroom 3 : 10'0 x 8'7 (3.05m x 2.62m)

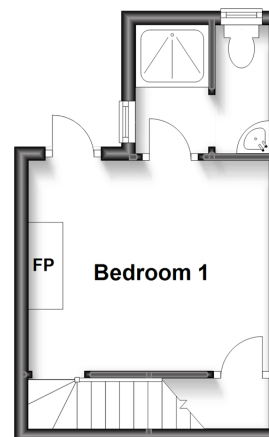
Bathroom

OUTSIDE

Garden to Rear

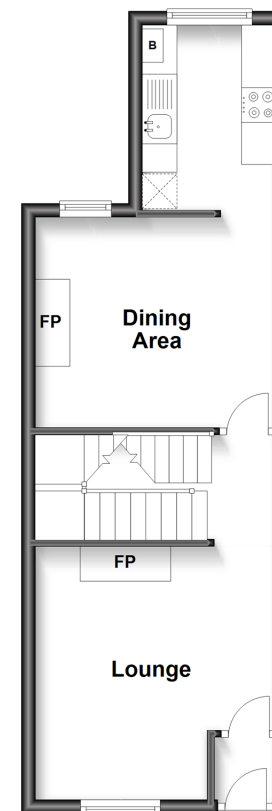
Lower Ground Floor

Approx. 17.2 sq. metres (184.7 sq. feet)



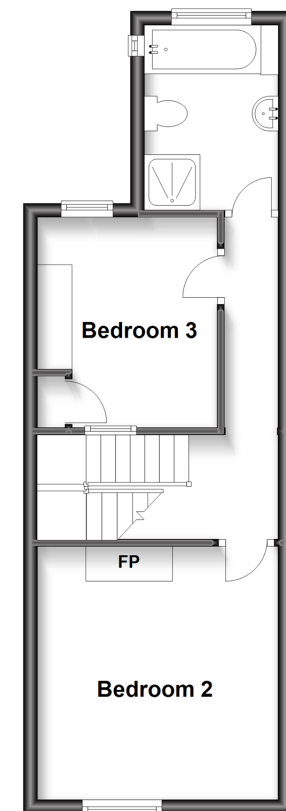
Ground Floor

Approx. 34.4 sq. metres (370.4 sq. feet)



First Floor

Approx. 34.4 sq. metres (370.4 sq. feet)



Call Deal - 01304 361420 ■ wardsofkent.co.uk

- Legal advice should be taken to verify fixtures/fittings, planning, alterations and/or lease details
- Appliances & services are untested, dimensions are approximate and floor plans are not to scale
- Through a Homewise Home For Life Plan people aged 60+ can secure this property for up to 59% less, by purchasing a Lifetime Lease.



10634463/20230727/BH/LB1