



Price
£125,000

3x  1x  1x 

**Kingsdown Park, Upper
Street, Kingsdown, Deal,
Kent, CT14**



Video Tour available

Wards
Helping you move forwards



Main features

- Located on a well maintained site
- Ideal as a holiday home or investment
- Recent works carried out. turn key and ready to use
- Private decking to the rear
- Situated within walking distance of Kingsdown beach and nearby amenities

Accommodation

GROUND FLOOR

Lounge/Diner: 16'10 x 9'8 (5.13m x 2.95m) narrowing to 15'7 x 8'0 (4.75m x 2.44m)

Kitchen : 7'8 x 7'8 (2.34m x 2.34m)

Bedroom 2: 11'1 x 10'3 (3.38m x 3.13m)

Bathroom

FIRST FLOOR

Landing

Bedroom 1: 16'6 x 11'4 (5.03m x 3.46m)

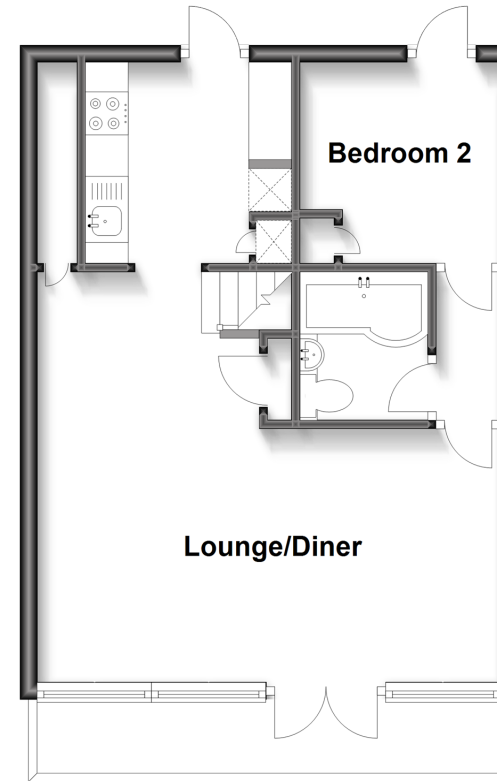
Bedroom 3: 7'8 x 7'5 (2.34m x 2.26m)

OUTSIDE

Private Decking

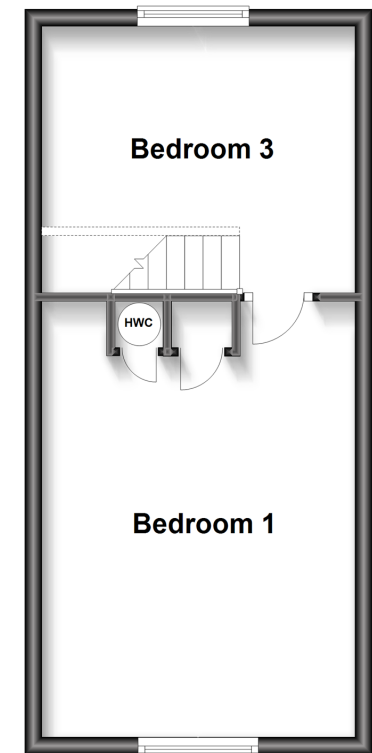
Ground Floor

Approx. 39.1 sq. metres (421.1 sq. feet)



First Floor

Approx. 30.4 sq. metres (327.0 sq. feet)



Call Deal - 01304 361420 ■ wardsofkent.co.uk

- If buying to let, the energy rating will need to be improved to at least 'E' rating before you can let the property
- Legal advice should be taken to verify fixtures/fittings, planning, alterations and/or lease details
- Appliances & services are untested, dimensions are approximate and floor plans are not to scale



10634482/20230421/CC/WSM