



Price

£215,000

Leasehold

2x  1x  1x 

**Wolfe Court, Canada
Road, Walmer, Deal,
Kent, CT14**

OVER 60?

Secure this property
for up to **59% less!**

Wards
Helping you move forwards



Main features

- Spacious first floor flat in a quiet location
- Only minutes from the seafront and Walmer green
- Allocated parking space and garage
- Long lease remaining
- Some updating required meaning scope to apply your own stamp

Accommodation

FIRST FLOOR

Entrance Hallway

Bedroom 1: 13'10 x 13'9 (4.22m x 4.19m)

Lounge/Diner: 21'9 x 12'4 (6.63m x 3.76m)

Kitchen : 11'3 x 6'11 (3.43m x 2.11m)

Bathroom

Bedroom 2: 12'2 x 6'11 (3.71m x 2.11m)

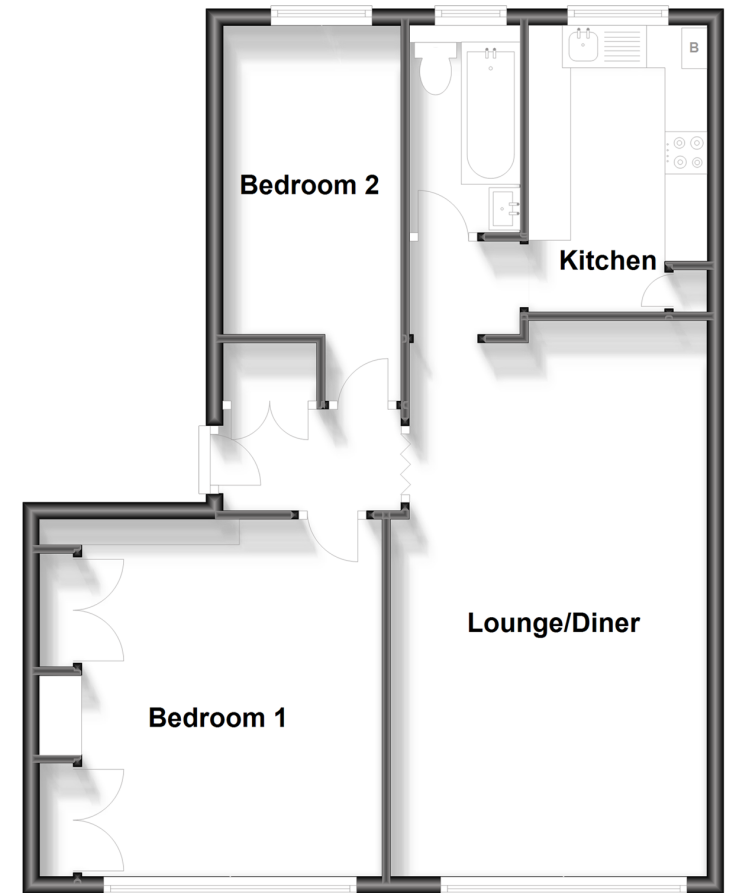
OUTSIDE

Parking Space

Garage

First Floor

Approx. 67.0 sq. metres (721.2 sq. feet)



Call Deal - 01304 361420 ■ wardsforkent.co.uk

- Legal advice should be taken to verify fixtures/fittings, planning, alterations and/or lease details
- Appliances & services are untested, dimensions are approximate and floor plans are not to scale
- Through a Homewise Home For Life Plan people aged 60+ can secure this property for up to 59% less, by purchasing a Lifetime Lease.



10634499/20230920/LB1/LB1