



OVER 60?

Secure this property
for up to **59% less!**

Price

£425,000

Freehold

4x  2x  1x 

**Thompson Close,
Walmer, Deal, Kent,
CT14**

Wards
Helping you move forwards



Main features

- Extended home creating plenty of space for the whole family
- En-suite bathroom to master bedroom
- Good size rear garden with far reaching views of fields behind
- Cul-de-sac location
- Driveway parking for two cars

Accommodation

GROUND FLOOR

Porch

Lounge: 16'8 x 14'8 (5.08m x 4.47m)

Conservatory : 14'11 x 11'1 (4.55m x 3.38m)

Kitchen: 16'5 x 9'11 (5.01m x 3.02m)

Dining area: 12'0 x 8'7 (3.66m x 2.62m)

Cloakroom

Utility room : 7'6 x 6'6 (2.29m x 1.98m)

Storage/former garage

FIRST FLOOR

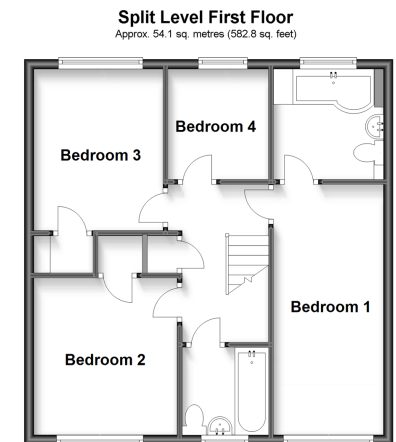
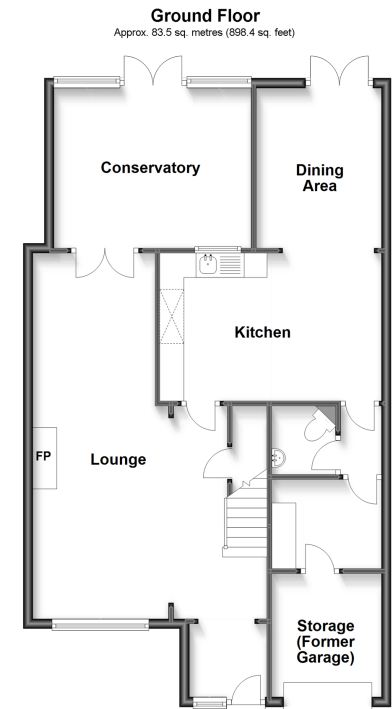
Bedroom 1: 16'4 x 7'6 (4.98m x 2.29m)

Bedroom 4: 7'8 x 7'8 (2.34m x 2.34m)

Bedroom 3: 10'8 x 8'8 (3.25m x 2.64m)

Bedroom 2: 11'0 x 9'10 (3.36m x 3.00m)

Bathroom



Call Deal - 01304 361420 ■ wardsokent.co.uk

- Legal advice should be taken to verify fixtures/fittings, planning, alterations and/or lease details
- Appliances & services are untested, dimensions are approximate and floor plans are not to scale
- Through a Homewise Home For Life Plan people aged 60+ can secure this property for up to 59% less, by purchasing a Lifetime Lease.



10634501/20230518/LB1/LB1