



Price
£725,000

Freehold

4x  3x  2x 

**Cavalry Court, Walmer,
Deal, Kent, CT14**

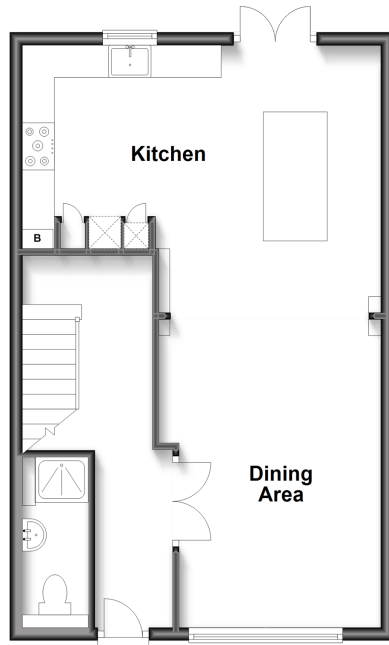
OVER 60?

Secure this property
for up to **59% less!**

Wards
Helping you move forwards

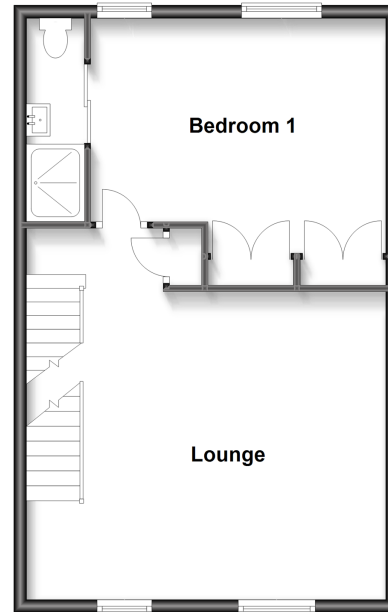
Ground Floor

Approx. 49.0 sq. metres (527.7 sq. feet)



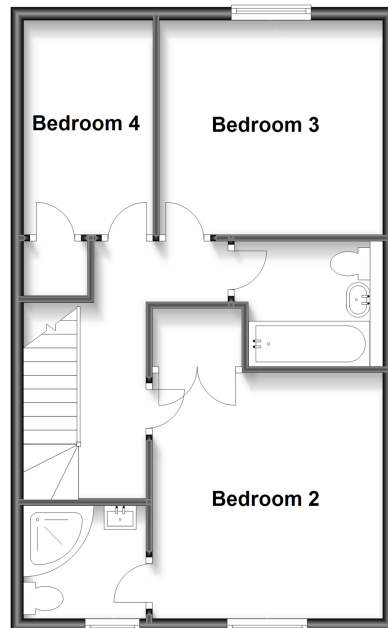
First Floor

Approx. 50.5 sq. metres (544.0 sq. feet)



Second Floor

Approx. 51.9 sq. metres (559.0 sq. feet)



Accommodation

GROUND FLOOR

Entrance Hallway

Cloakroom

Kitchen/Dining Area : 30'4 x 18'5 (9.25m x 5.62m)

FIRST FLOOR

Lounge : 18'8 x 16'0 (5.69m x 4.88m)

Bedroom 1 : 15'3 x 11'9 (4.65m x 3.58m)

En-Suite Wet Room

SECOND FLOOR

Landing

Bedroom 2 : 12'5 x 11'7 (3.79m x 3.53m)

En-Suite Shower Room

Bathroom

Bedroom 3 : 11'5 x 11'1 (3.48m x 3.38m)

Bedroom 4 : 10'11 x 6'11 (3.33m x 2.11m)

OUTSIDE

Parking

Garden to Rear



Main features

- Situated in a exclusive development only a short walk from the beach
- Bright open plan living space with high end kitchen and exposed brick wall
- One of the biggest garden, with side access
- Large windows and high ceilings
- Current owners have remodelled the flow of the house and each room is presented to the highest standard



Nearest Schools

Primary Schools: Deal Parochial C of E Primary 0.2 miles, The Downs C of E Primary 0.5 miles, Warden House Primary 0.9 miles
Secondary Schools: Goodwin Academy 0.4 miles



Transport Information

Train Stations: Deal 0.7 miles, Walmer 0.9 miles, Martin Mill 3.6 miles



Address

Cavalry Court, Walmer, Deal, Kent, CT14



Directions

For directions to this property please contact us.



Wards
Helping you move forwards

Call Deal Branch 01304 361420 ■ wardsofkent.co.uk



■ Legal advice should be taken to verify fixtures/fittings, planning, alterations and/or lease details ■ Appliances & services are untested, dimensions are approximate and floor plans are not to scale
■ Through a Homewise Home For Life Plan people aged 60+ can secure this property for up to 59% less, by purchasing a Lifetime Lease.



10634513/20230422/BG/LB1