



**Price**

**£200,000**

2x  1x  1x 

**Greenacres Park, Golf  
Road, Deal, Kent, CT14**

*Wards*  
Helping you move forwards





## Main features

- Detached park home for over 50's
- Stunning countryside views
- Driveway parking
- En-suite shower room and walk in wardrobe
- Large spacious shaped lounge/diner

## Accommodation

### GROUND FLOOR

Entrance Hallway

Lounge/Diner : 19'6 x 19'5 (5.95m x 5.92m)

Kitchen : 11'5 x 9'5 (3.48m x 2.87m)

Bedroom 1: 10'10 x 9'5 (3.30m x 2.87m)

En-suite Bathroom

Walk in wardrobe

Bedroom 2: 10'9 x 9'7 (3.28m x 2.92m)

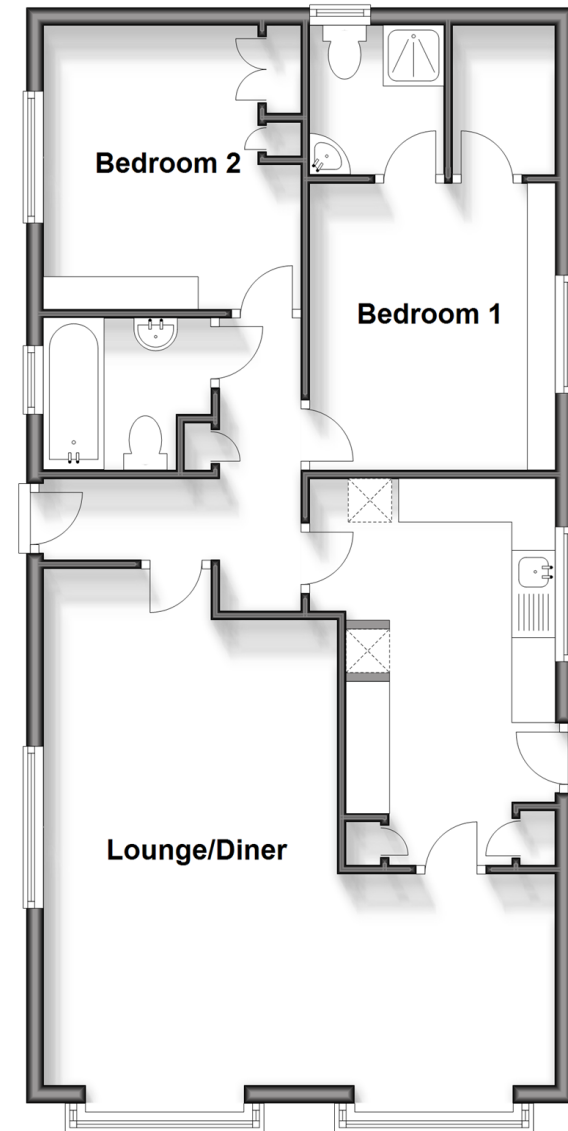
Bathroom

### OUTSIDE

Patio Area

## Ground Floor

Approx. 72.4 sq. metres (779.0 sq. feet)



**Call Deal - 01304 361420 ■ [wardsofkent.co.uk](http://wardsofkent.co.uk)**

- If buying to let, the energy rating will need to be improved to at least 'E' rating before you can let the property
- Legal advice should be taken to verify fixtures/fittings, planning, alterations and/or lease details
- Appliances & services are untested, dimensions are approximate and floor plans are not to scale



10634529/20231204/BG/LB1