



**Price**  
**£290,000**

**Freehold**

3x  1x  2x 

**Circular Road,  
Betteshanger, Deal,  
Kent, CT14**

**OVER 60?**

Secure this property  
for up to **59% less!**



Virtual Reality Tour available

**Wards**  
Helping you move forwards





## Main features

- **Garage & off-road parking**
- **Potential to extend (subject to relevant planning permission)**
- **Plenty of scope to improve and adapt**
- **Located within a stones throw of local community parks**
- **Generous gardens to the front and rear**

## Accommodation

### GROUND FLOOR

Entrance Hallway

Lounge: 16'8 x 12'5 (5.08m x 3.79m)

Dining room: 10'11 x 10'1 (3.33m x 3.08m)

Kitchen: 14'9 x 6'2 (4.50m x 1.88m)

### FIRST FLOOR

Landing

Bedroom 1: 12'3 x 10'11 (3.74m x 3.33m)

Bedroom 2: 10'11 x 9'9 (3.33m x 2.97m)

Bedroom 3: 8'7 x 6'11 (2.62m x 2.11m)

Bathroom

Separate Toilet

### OUTSIDE

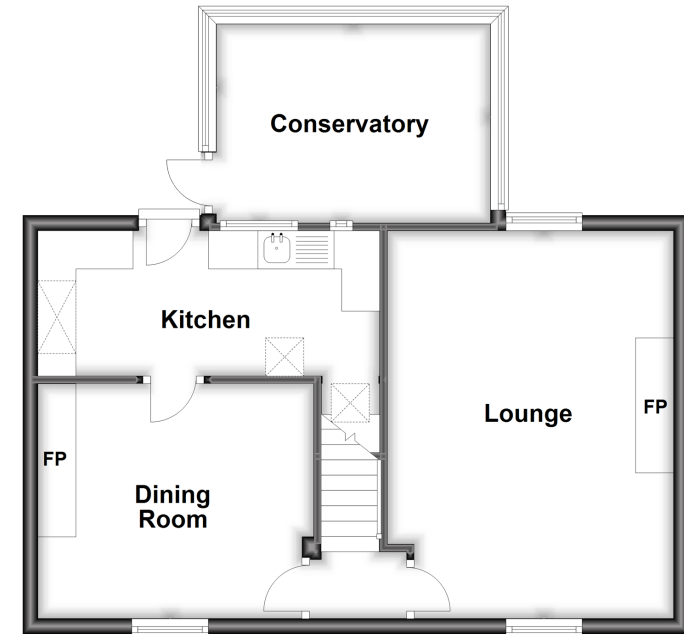
Conservatory

Garage & Off Road Parking

Garden to Front & Rear

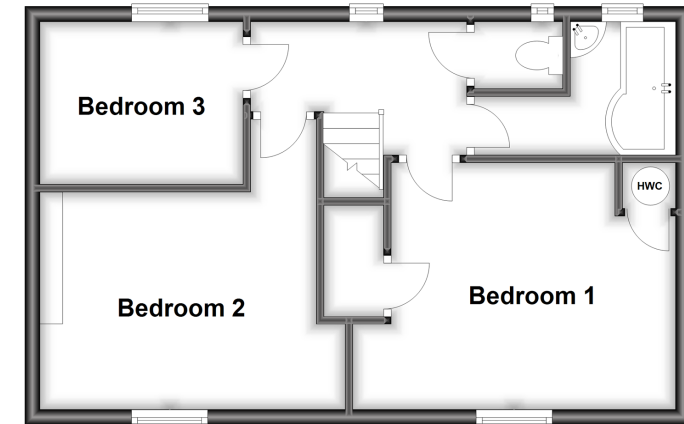
### Ground Floor

Approx. 52.4 sq. metres (564.2 sq. feet)



### First Floor

Approx. 42.4 sq. metres (456.8 sq. feet)



**Call Deal - 01304 361420 ■ [wardsofkent.co.uk](http://wardsofkent.co.uk)**

- Legal advice should be taken to verify fixtures/fittings, planning, alterations and/or lease details
- Appliances & services are untested, dimensions are approximate and floor plans are not to scale
- Through a Homewise Home For Life Plan people aged 60+ can secure this property for up to 59% less, by purchasing a Lifetime Lease.



10634534/20230317/LB1/WSM